

City of Oakley
ADDENDUM NO. 2 to contract documents for
CIP 247 – East Cypress Road Widening Project From Knightsen
Avenue to Jersey Island Road

BID OPENING DATE: October 11, 2022 - 2:00 PM

Notice is hereby given that the following clarifications and revisions are made to the above referenced contract documents:

All bidders shall acknowledge receipt and acceptance of Addendum No. 2 by signing in the space provided at the end of this Addendum and submitting the signed addendum with their proposal.



Jason Kabalin
Capital Projects Engineer
October 5, 2022

Contractor Signature

Date

Company Name

I. Updates to the Part III of the Specifications:

1. Add the following language to Appendix F

APPENDIX F Knighten and East Cypress Road intersection improvements design drawings for Subdivision 9033 Cypress Road Phase 3 Improvement plans
– By Others, for Coordination Purposes Only

2. Add the follow language in Section 10-1.01 – General, under Cooperation

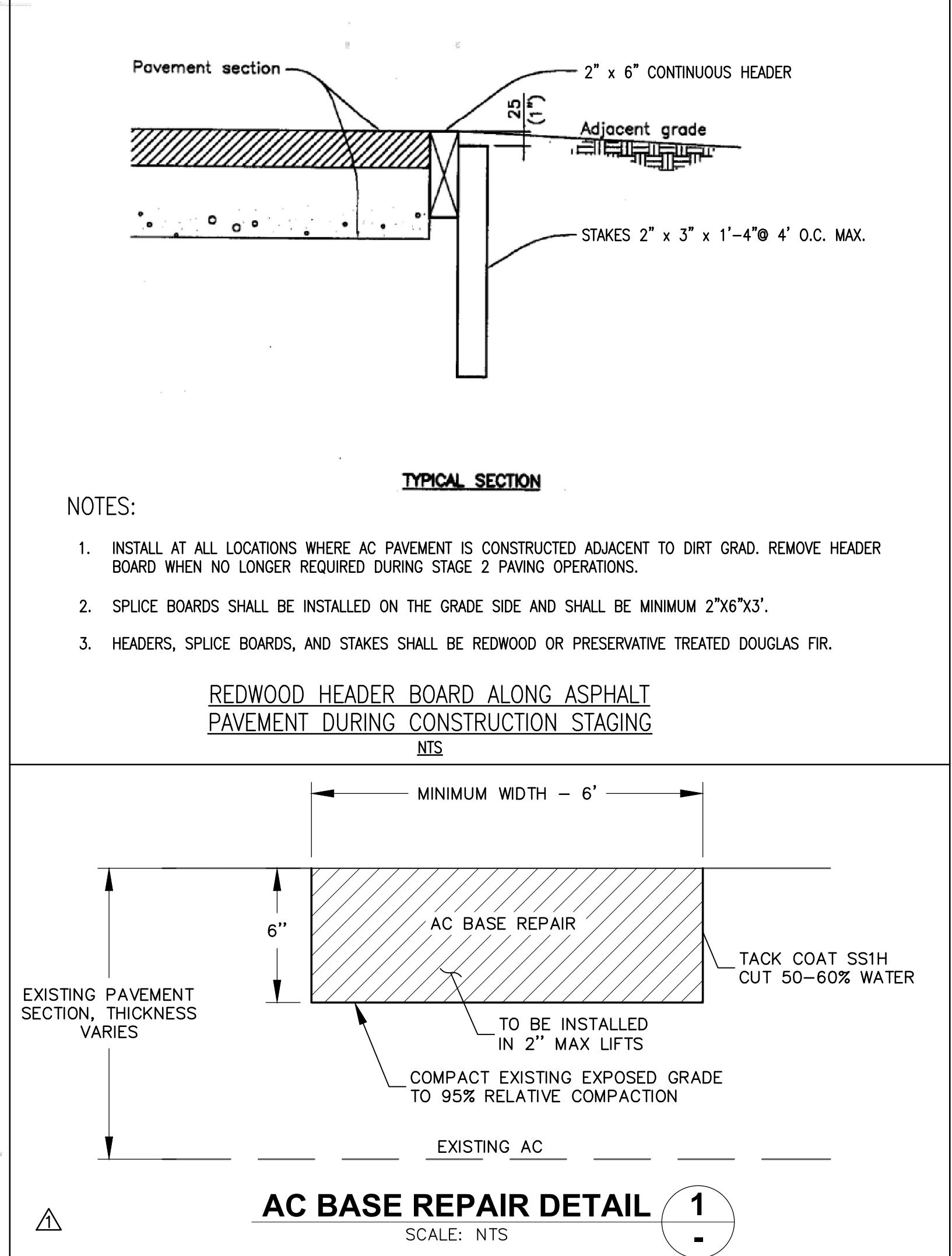
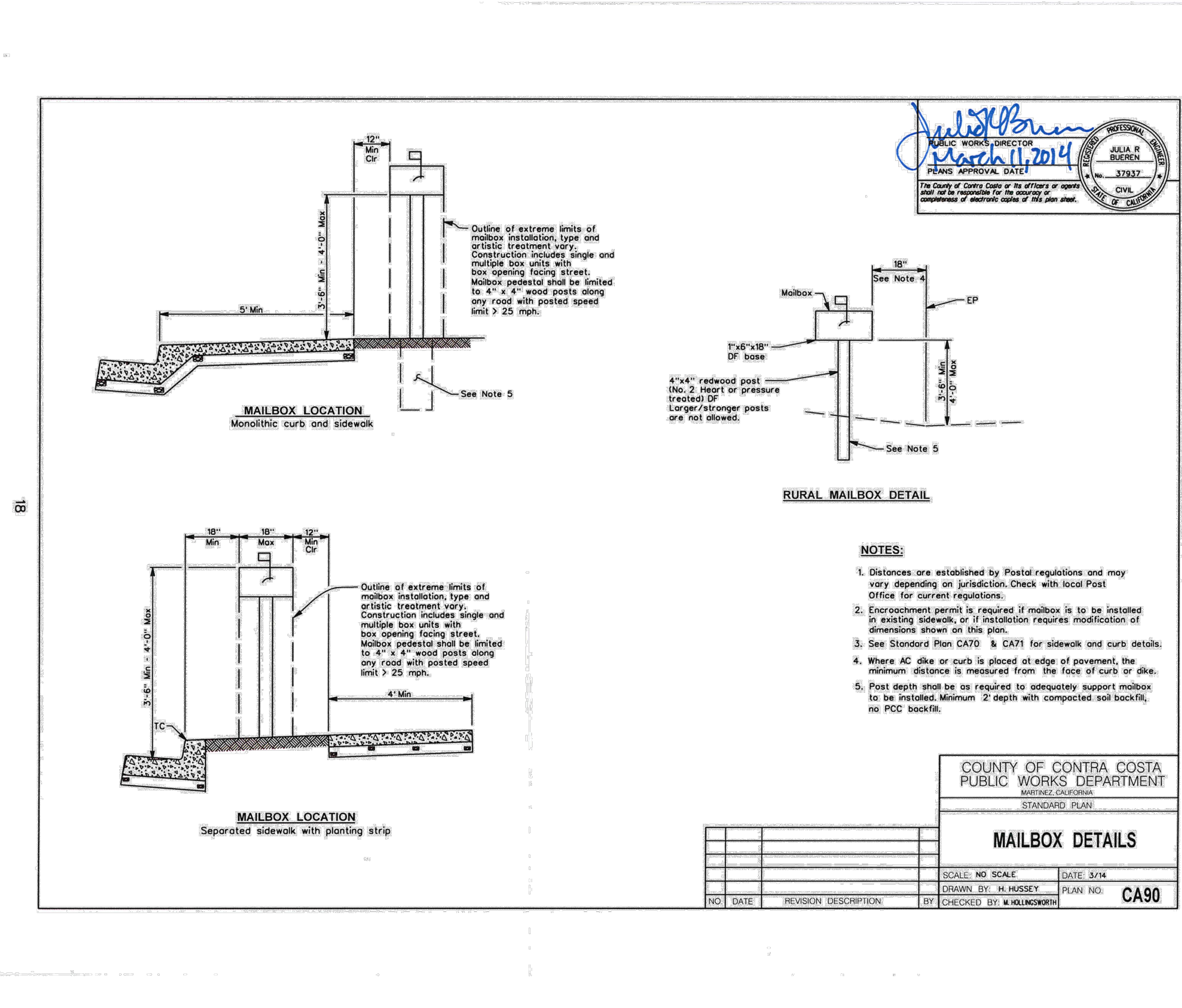
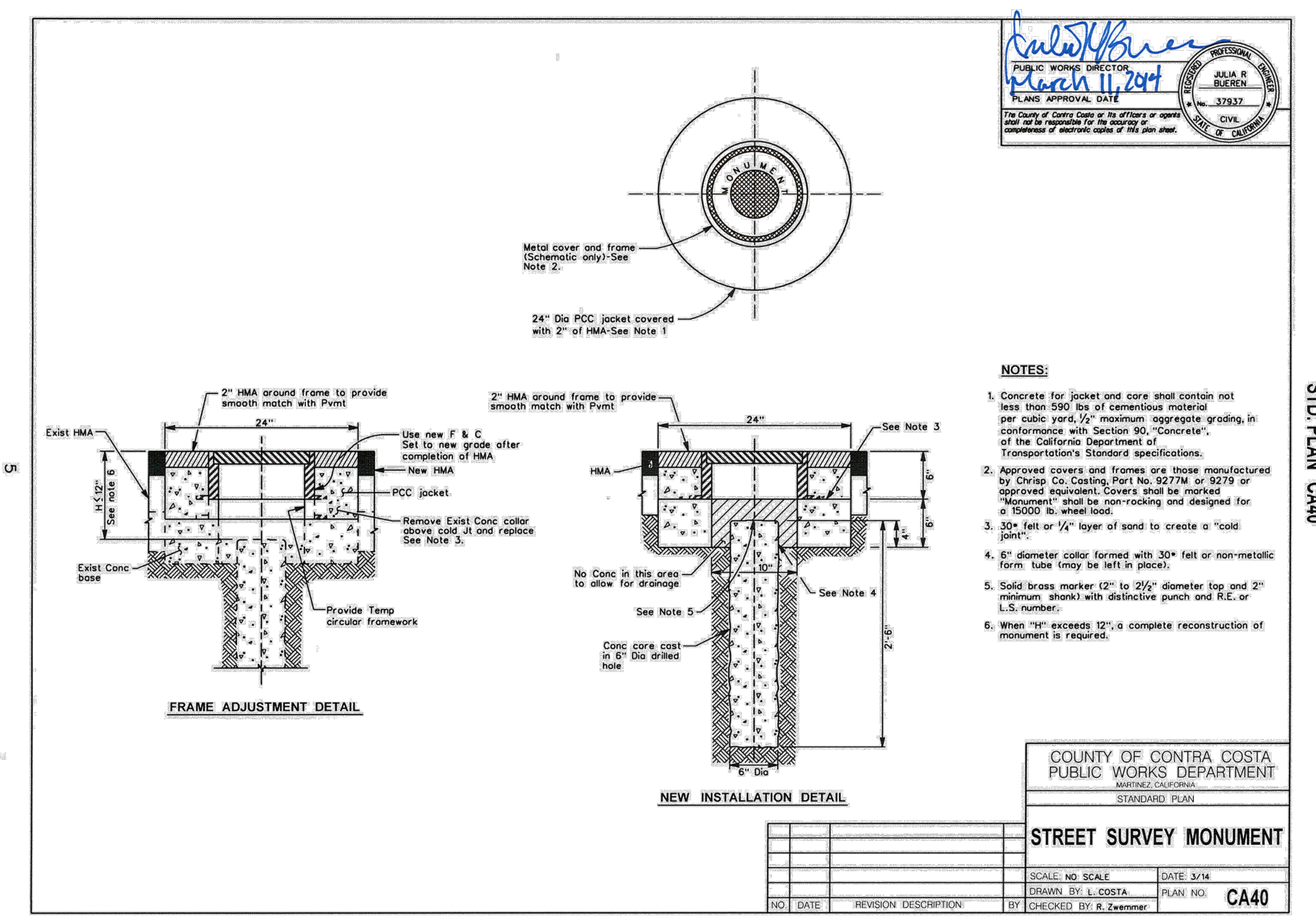
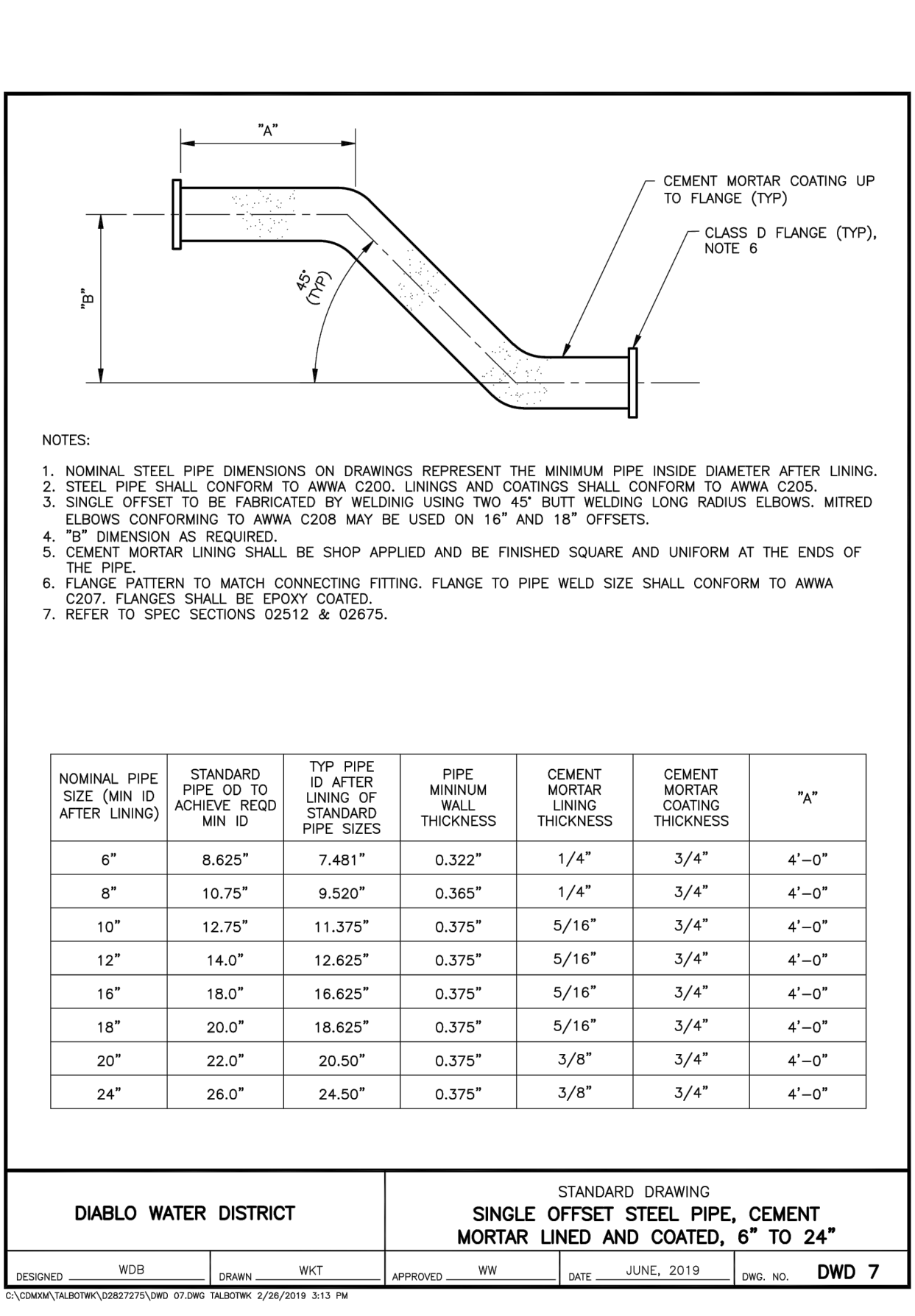
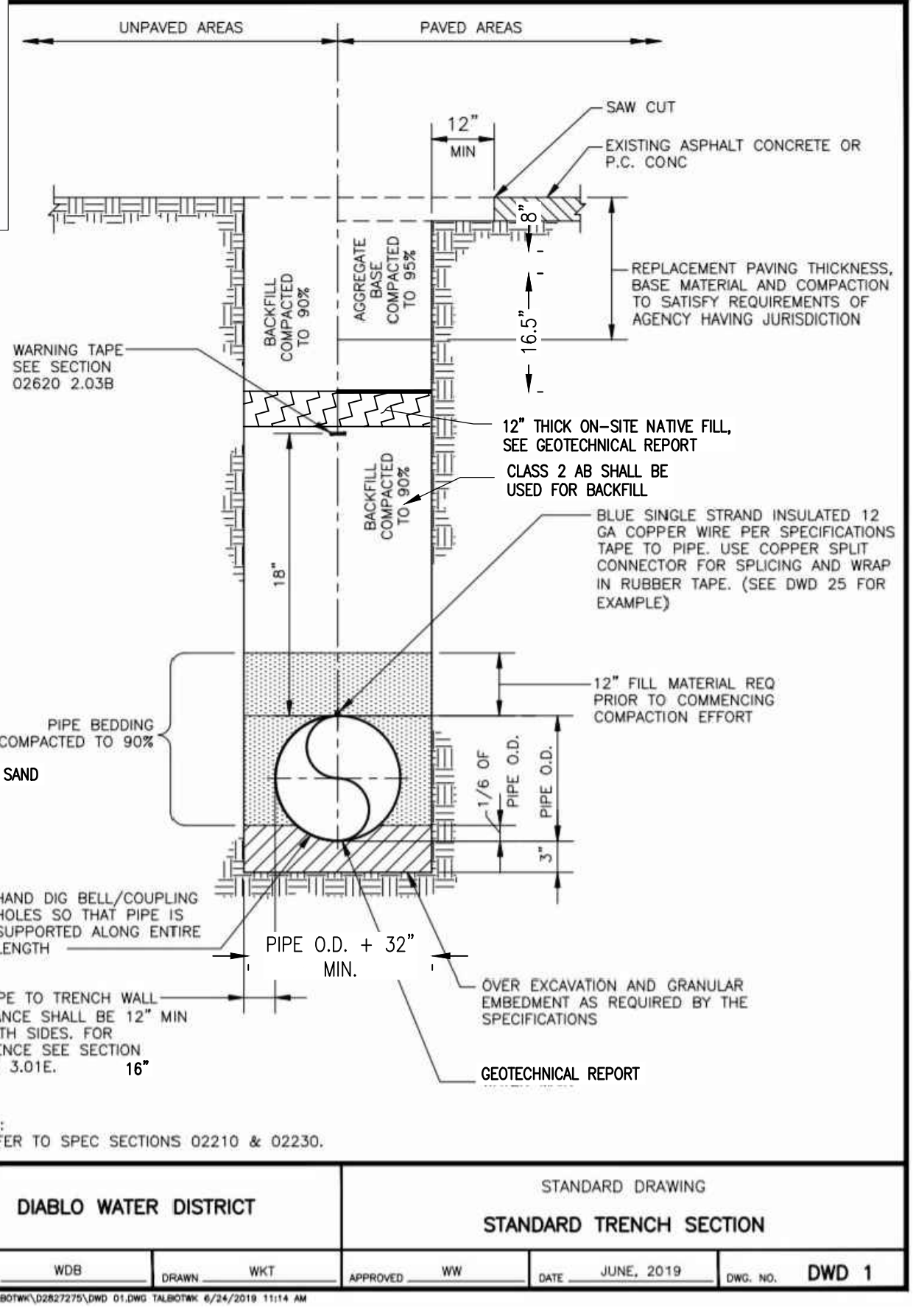
The work shown in Appendix F is not included in the CIP 247 Project scope.

The Contractor is required to coordinate with adjacent project contractors to the east and west of this project's limits for traffic control and scheduling. **A copy of the project plans for the Knightsen Avenue/East Cypress Road intersection improvements is provided in Appendix F for coordination purposes only.**

Appendix F

Knighen and East Cypress Road intersection improvements design drawings for Subdivision 9033 Cypress Road Phase 3 Improvement plans – [By Others, for Coordination Purposes Only](#)

II. The following plan sheets have been replaced
[Sheet 7, G1.6 – Civil Details](#)



F-10 CAST IRON DRAINAGE GATE

*FLAPGATE SHALL BE 24" IN SIZE
CAST IRON - AUTOMATIC

- Flatback or Spigotback
- Cast Iron Frame and Cover
- Galvanized Steel Angle Links
- Bronze Bushings Standard
- Built-in "Safety Bar" Prevents Sticking
- 5" seat on 6" - 24" sizes
- 2 1/2" seat on 30" - 72" sizes
- Steel Assembly Hardware

The Waterman Red Top Drainage Gate has been designed as a competitive flap gate for use with concrete pipe, headwalls, and corrugated metal pipe with up to a ten foot seating head. The frame and cover are of heavy duty cast iron. Steel angle links have been used to absorb unbalanced side shock, and are balance-pivoted on bronze bushings.

A 5" seat on sizes six inches to twenty-four inches and 2 1/2" seat on sizes 30 inches to 72 inches eliminates the need for special pipe cuts or sections, and prevents the gate from standing open due to slight pipe sagging or settling. An innovation in the cover provides each gate with a safety to prevent jamming, without additional cost.

Gates are available with special stainless steel or brass links and bolts as well as bronze seating faces.

This gate has been extensively used on federal, state and municipal projects for drainage, waste line, sewage treatment, flood control and irrigation systems. A free outflow with practical sealing against back flow combine with maintenance-free operation to assure years of service.

This gate is not recommended for pump discharge or other applications where violent slamming may occur. Heavy-duty links and bushings are available when severe operating conditions are anticipated.

OPTIONAL ITEMS INCLUDE:
• Bronze seats
• Stainless Steel or bronze links, and bolts.
• Special heavy-duty links and bushings for severe service
• Special paint coatings or ASTM galvanizing
• Taper setting collars and special pipe adapters.

WATERMAN
48
PATENTED 1910

Maximum 10 foot seating head

No.	Name	Qty.
1	Frame	1
2	Cover	1
3	Hinge Link	2
4	Hinge Bushing	4
5	Bolt	4
6	Nut	4

811 CALL BEFORE YOU DIG SAFE DIGGING PARTNER

PROFESSIONAL ENGINEER
JULIA R. BUEHN
No. 37937
Exp. 6-30-24
CIVIL
STATE OF CALIFORNIA

STANDARD PLAN CA40

PROFESSIONAL ENGINEER
JULIA R. BUEHN
No. 37937
Exp. 6-30-24
CIVIL
STATE OF CALIFORNIA

OAKLEY CALIFORNIA

CIP 247 - EAST CYPRESS ROAD WIDENING PROJECT
FROM KNIGHTSEN AVENUE TO JERSEY ISLAND ROAD

CIVIL DETAILS
CONTRA COSTA COUNTY
CITY OF OAKLEY
CALIFORNIA

REVISIONS

NO.	DATE	REVISION DESCRIPTION
1	09/30/22	SCALE: NTS
2		DESIGN: AA
3		DRAWN: ES
4		APPROVED: DL

DATE: 09/30/22
SCALE: NTS
DESIGN: AA
DRAWN: ES
APPROVED: DL
JOB NO.: 21063

DRAWING NUMBER: **G1.6**
7 OF 68