

- Conceptual Artwork
All Sizes are Estimated Until Technically Verified
- Technical Artwork
- Designed per Redlines

MAIN ID WALL SIGNS					
SIGN #	LOCATION	CODE ALLOWANCE	PROPOSED SQ. FT.	SIGN TYPE	COMMENTS
1	NORTH ELEVATION	MAX 33 SF FOR ELEVATION	29.4 SF	ILLUM'D CHANNEL LTRS - RACEWAY	
2	EAST ELEVATION	MAX 40 SF FOR ELEVATION	29.4 SF	ILLUM'D CHANNEL LTRS - RACEWAY	

TOTAL BUILDING SIGN AREA ALLOWED - 33.0 SF - NORTH ELEV. / 40.0 SF EAST ELEV.
 TOTAL NUMBER OF BUILDING SIGNS ALLOWED - NO LIMIT

FREESTANDING MONUMENT SIGN					
SIGN #	LOCATION	CODE ALLOWANCE	PROPOSED SQ. FT.	SIGN TYPE	COMMENTS
3	MAIN ST ENTRANCE	MAX 36 SF @ 8'-0" TALL	30.6 SF	D/F MONUMENT	

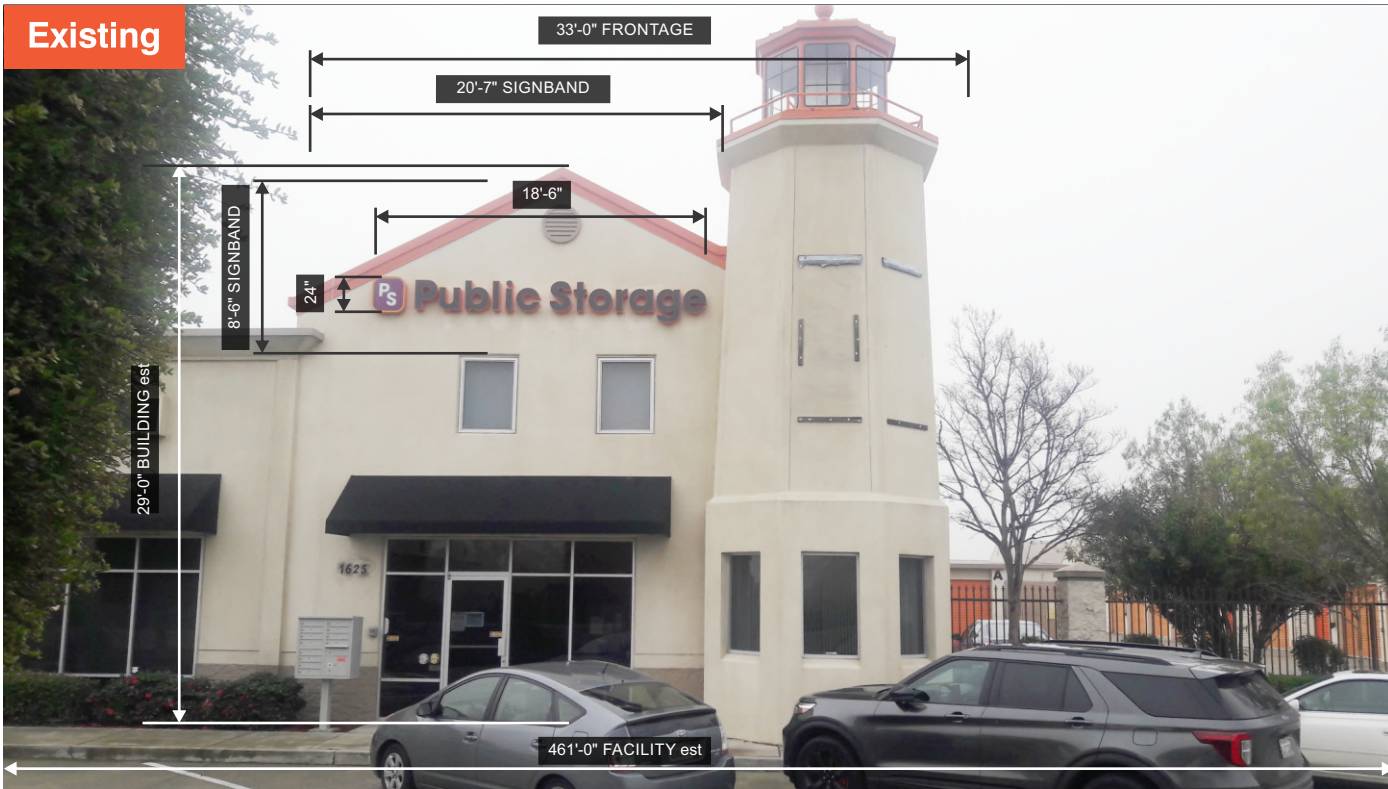
TOTAL FREESTANDING SIGN AREA ALLOWED - 36 SF
 TOTAL NUMBER OF FREESTANDING SIGNS ALLOWED - 1 MONUMENT SIGN

 **SITE PLAN**
NOT TO SCALE

PAINTING Code:
 Planning commission review & approval required for all major building changes (including paint). Site is multi-tenant location, all changes require landlord approval. Fallback design required if paint is not allowed by city or owner.

It is the intent and purpose of this color rendering to provide a basic color representation of your sign finish and color. However, digital media and printed colors will vary from actual paint finish and color. Existing painted surfaces will have a perceptible difference in shade and sheen from your sign finish. Providing a sample of the paint you wish to match or a Matthews paint color formula will minimize the differences.

 ...bringing your image to light! 16265 Star Road Nampa, ID 83687 - toll free: 800.592.8058 - tele: 208.345.4020 WWW.imagenational.com	 UNDERWRITERS LABORATORIES ELECTRIC SIGN NAMPALANT - UL #433195-001 <small>U.S. & P.R. - All signs conform to UL-48/2161 (labeled accordingly) & must comply with UL-41.1 install procedures. Canada - all signs must be CAS compliant. This sign(s) is intended to be installed in accordance with requirements of article 600 of the National Electrical Code and/or applicable local codes. This includes proper grounding and bonding of the sign.</small>	Client: PUBLIC STORAGE	Design Number: TG-0512-20	File Location: PBS-08035-Oakley CA-R4-101520	Page No.
		Site: SITE #08035 1625 MAIN STREET OAKLEY, CALIFORNIA 94561	Date: 10/15/20	Drawing type:	1 of 6
		Account Manager: HS	Designer: CL / DF / TRH	Rev:	



NORTH ELEVATION (OFFICE) -
- REMOVE AND DISCARD SIGN AND AWNING

EXISTING SF: 37.0



NORTH ELEVATION (OFFICE) -

NOTE: PAINTING BY OTHERS

NOTE:
Any deviations from location reference
to call Image National on Site Direction.

ALLOWED SF: 33.0
PROPOSED SF: 29.4



Special Notes
Existing sign dimensions not provided in tech survey. Code does not require keeping existing awning; however, all tenants have a black awning above entry. Site is an existing multi-tenant location and all signs require landlord approval. Propose removing awning. Fallback design required if removal is not allowed by owner.



1 **ILLUMINATED CHANNEL LETTERS - RACEWAY**
SCALE: 3/8"=1'-0"
LETTER AREA (BOXED) - 29.4 SF

MINIMUM CLEAR SPACE REQUIRED - 3'-4" X 16'-6"

It is the intent and purpose of this color rendering to provide a basic color representation of your sign finish and color. However, digital media and printed colors will vary from actual paint finish and color. Existing painted surfaces will have a perceptible difference in shade and sheen from your sign finish. Providing a sample of the paint you wish to match or a Matthews paint color formula will minimize the differences.

image national signs **in**
...bringing your image to light!
16265 Star Road Nampa, ID 83687 - toll free: 800.592.8058 - tele: 208.345.4020
WWW.imagenational.com

UL UNDERWRITERS LABORATORIES ELECTRIC SIGN
NAMPA PLANT - UL #433195-001
U.S. & P.R. - All signs conform to UL-48/2161 (labeled accordingly) & must comply with UL-41.1 install procedures. Canada - all signs must be CAS compliant. This sign(s) is intended to be installed in accordance with requirements of article 600 of the National Electrical Code and/or applicable local codes. This includes proper grounding and bonding of the sign.

Client: PUBLIC STORAGE
Site: SITE #08035
1625 MAIN STREET
OAKLEY, CALIFORNIA 94561

Design Number: TG-0512-20
Date: 10/15/20
Designer: CL / DF / TRH
Account Manager: HS

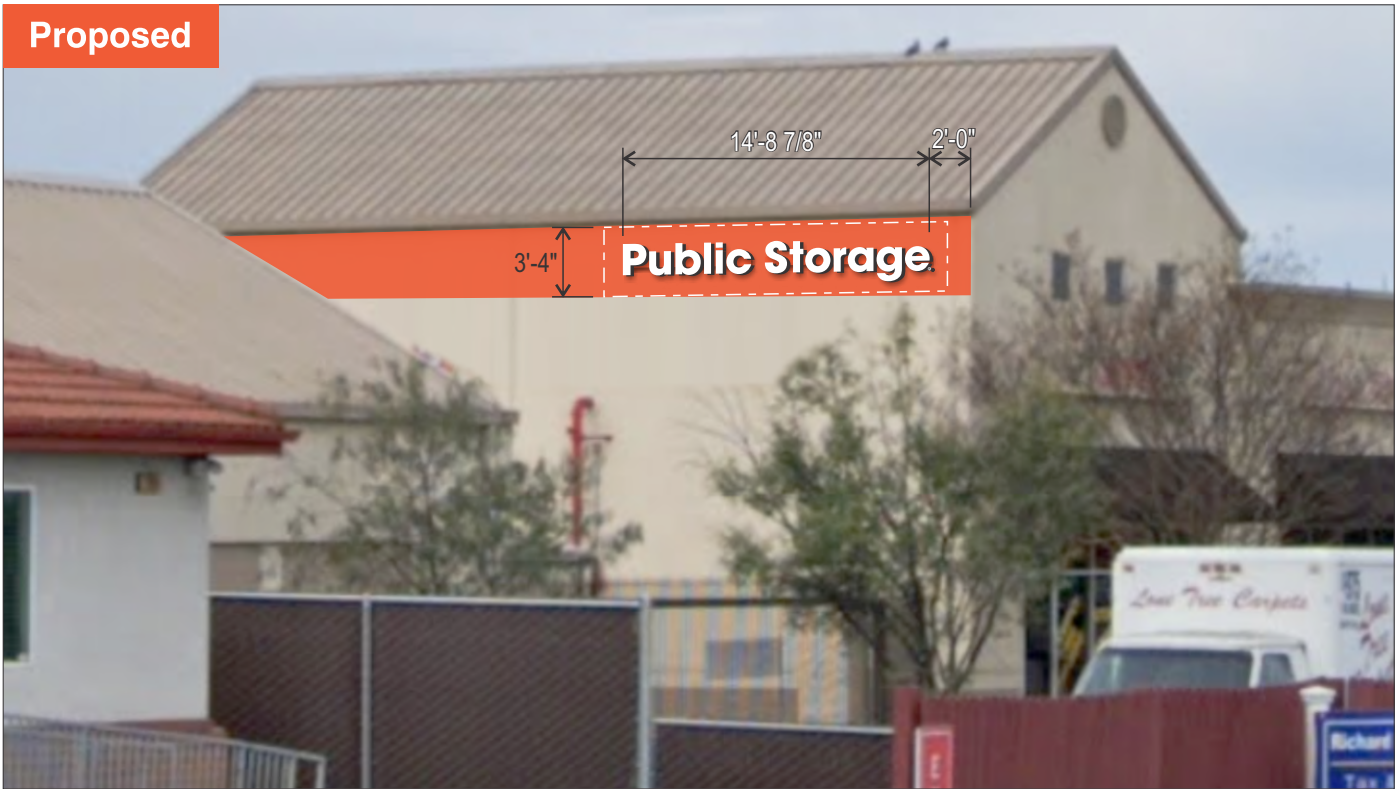
File Location: PBS-08035-Oakley CA-R4-101520
Drawing type:
Rev:

Page No.
2 of 6



EAST ELEVATION (STORAGE UNIT)
- REMOVE AND DISCARD SIGN

EXISTING SF: 37.00



EAST ELEVATION (STORAGE UNIT)

NOTE: PAINTING BY OTHERS

ALLOWED SF: Subject to city/owner approval.
PROPOSED SF: 29.4

NOTE:
Any deviations from location reference
to call Image National on Site Direction.



Special Notes
Site is a multi-tenant site, and existing sign does not appear to be on PS tenant frontage. Owner approval required to replace sign and paint. Proposed sign to match sign 1, in same location as current sign.. Fallback design is required if sign is not allowed by city or owner.



2 ILLUMINATED CHANNEL LETTERS - RACEWAY
SCALE: 3/8"=1'-0"
LETTER AREA (BOXED) - 29.4 SF

MINIMUM CLEAR SPACE REQUIRED - 3'-4" X 16'-6"

It is the intent and purpose of this color rendering to provide a basic color representation of your sign finish and color. However, digital media and printed colors will vary from actual paint finish and color. Existing painted surfaces will have a perceptible difference in shade and sheen from your sign finish. Providing a sample of the paint you wish to match or a Matthews paint color formula will minimize the differences.

image national signs **in**
...bringing your image to light!
16265 Star Road Nampa, ID 83687 - toll free: 800.592.8058 - tele: 208.345.4020
WWW.imagenational.com

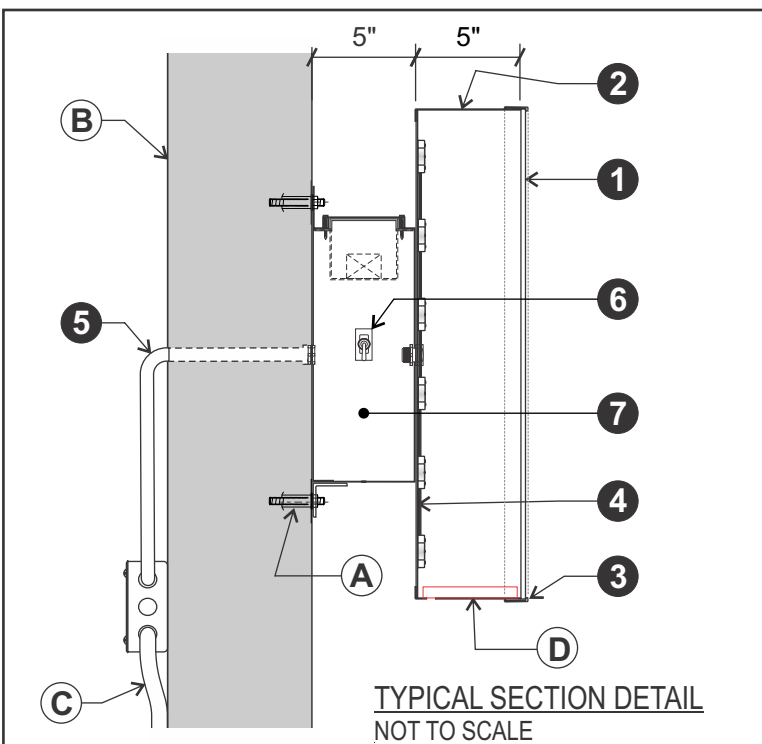
UL UNDERWRITERS LABORATORIES ELECTRIC SIGN
NAMPA PLANT - UL #433195-001
U.S. & P.R. - All signs conform to UL-48/2161 (labeled accordingly) & must comply with UL-41.1 install procedures. Canada - all signs must be CAS compliant. This sign(s) is intended to be installed in accordance with requirements of article 600 of the National Electrical Code and/or applicable local codes. This includes proper grounding and bonding of the sign.

Client: PUBLIC STORAGE
Site: SITE #08035
1625 MAIN STREET
OAKLEY, CALIFORNIA 94561

Design Number: TG-0512-20
Date: 10/15/20
Designer: CL / DF / TRH
Account Manager: HS

File Location: PBS-08035-Oakley CA-R4-101520
Drawing type:
Rev:

Page No.
3 of 6



PARTS LIST:

ITEM #	DESCRIPTION
1	3/16" Acrylic / .150 Poly (LETTER FACES)
2	Alum Coil 5.3" Black/Wht (RETURNS)
3	Trim Cap Jewelite 1.0" Black
4	White ACM Panel (BACKS)
5	Flex Alum Conduit 1/2"
6	Disconnect Switch & Photocell - Left End of Raceway
7	Metal Raceway

INSTALL LIST:

ITEM #	DESCRIPTION
A	Non-Corrosive Securement Using Appropriate Mounting Hardware
B	Concrete or Masonry Wall
C	20 amp 120v Circuits Required (supplied by others than Image National)
D	1/4" Weep Holes With Baffles as Required

APPROVED FASTENER SCHEDULE

	3/8" - 1/2" LAG SCREW, UNIVERSAL	FOR USE WITH WOOD OR EIFS WALL SYSTEMS. 1 1/2" MIN PENETRATION (EXCLUDING TIP)
	3/8" RED HEAD L.D.T. (LARGE DIAMETER TAPCON)	FOR USE WITH CONCRETE BLOCK, BRICK OR CONCRETE. EMBED A MIN. OF 2 1/2"
	3/8" DIA. HILTI HCL SLEEVE ANCHOR	FOR USE WITH CONCRETE, MASONRY AND BRICK. EMBED A MIN. OF 3 3/8"
	3/8" DIA. LAG WITH 3/8" SHIELD & WASHER	FOR USE WITH CONCRETE, MASONRY AND BRICK - EMBED A MIN. OF 2"

It is the intent and purpose of this color rendering to provide a basic color representation of your sign finish and color. However, digital media and printed colors will vary from actual paint finish and color. Existing painted surfaces will have a perceptible difference in shade and sheen from your sign finish. Providing a sample of the paint you wish to match or a Matthews paint color formula will minimize the differences.

image national signs
...bringing your image to light!

 16265 Star Road Nampa, ID 83687 - toll free: 800.592.8058 - tele: 208.345.4020
WWW.imagenational.com

UL UNDERWRITERS LABORATORIES ELECTRIC SIGN
NAMPA PLANT - UL #433195-001
 U.S. & P.R. - All signs conform to UL-48/2161 (labeled accordingly) & must comply with UL-41.1 install procedures. Canada - all signs must be CAS compliant. This sign(s) is intended to be installed in accordance with requirements of article 600 of the National Electrical Code and/or applicable local codes. This includes proper grounding and bonding of the sign.

Client: PUBLIC STORAGE
Site: SITE #08035
 1625 MAIN STREET
 OAKLEY, CALIFORNIA 94561

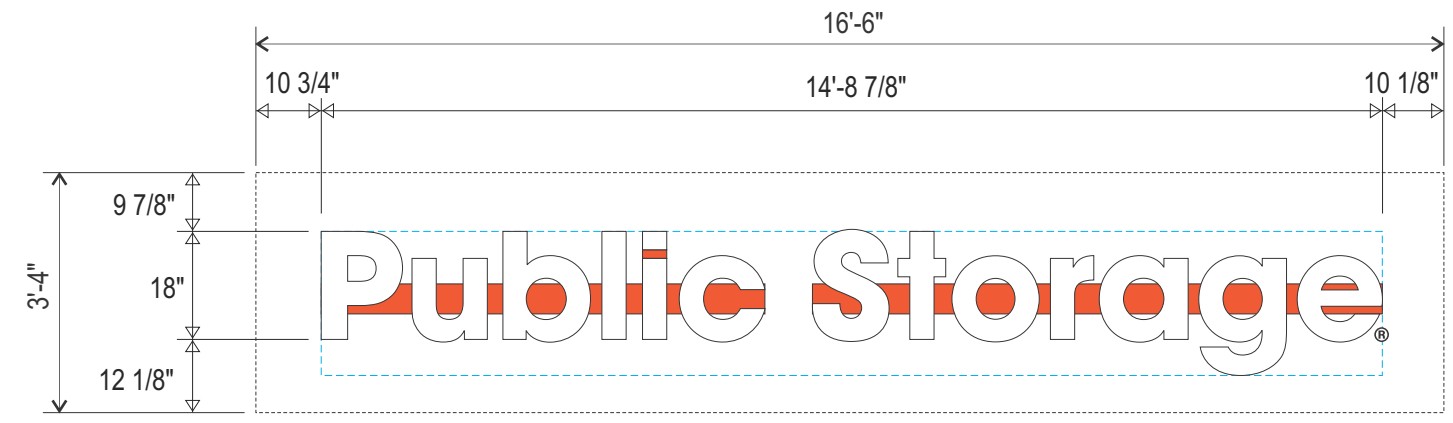
Design Number: TG-0512-20
Date: 10/15/20
Designer: CL / DF / TRH
Account Manager: HS

File Location: PBS-08035-Oakley CA-R4-101520
Drawing type:
Rev:

Page No.
4 of 6

NOTE:
 ANY PENETRATIONS ABOVE ROOFLINE OR EXPOSED, ARE REQUIRED TO BE INSTALLED USING SEALTIGHT AND WEATHER PROOF BOXES. TO BE PROVIDED BY SIGN INSTALLER.

PUBLIC STORAGE ORANGE
 PPG PUBLIC STORAGE ORANGE

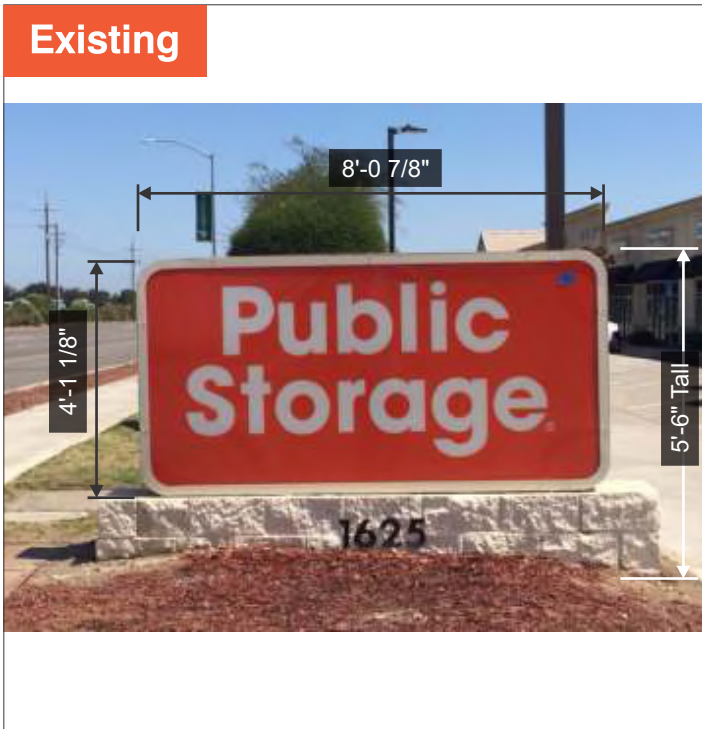


1 2 **ILLUMINATED CHANNEL LETTERS - RACEWAY**
 SCALE: 3/8"=1'-0"
 LETTER AREA (BOXED) - 29.4 SF

MINIMUM CLEAR SPACE REQUIRED - 3'-4" X 16'-6"

POWER SUPPLIES	(1) GEPS24-100U-NA
TOTAL AMPS	1.1 @ 120 V. (1) 20 AMP CIRCUIT REQ'D

1 LETTER FACE: MATERIAL: 3/16" CLEAR ACRYLIC OR .150 CLEAR POLYCARBONATE FIRST SURFACE 3M 3635-70 DIFFUSER FILM & 3660 CLEAR OVERLAMINATE FILM	2 RETURNS: MATERIAL: 5" .040 OR .050 PRE-PAINTED BLACK ALUMINUM	3 TRIM CAP: MATERIAL: 1" JEWELITE COLOR: BLACK
4 BACKS: MATERIAL: PRE-PAINTED WHITE 3MM ACM PANELS	5 ILLUMINATION: MATERIAL: GE WHITE L.E.D. ILLUMINATION	6 ELECTRICAL: REMOTE. 1.1 AMPS @ 120 V.



D/F MONUMENT
REMOVE AND DISCARD SIGN CABINET

Existing SF: 33.13

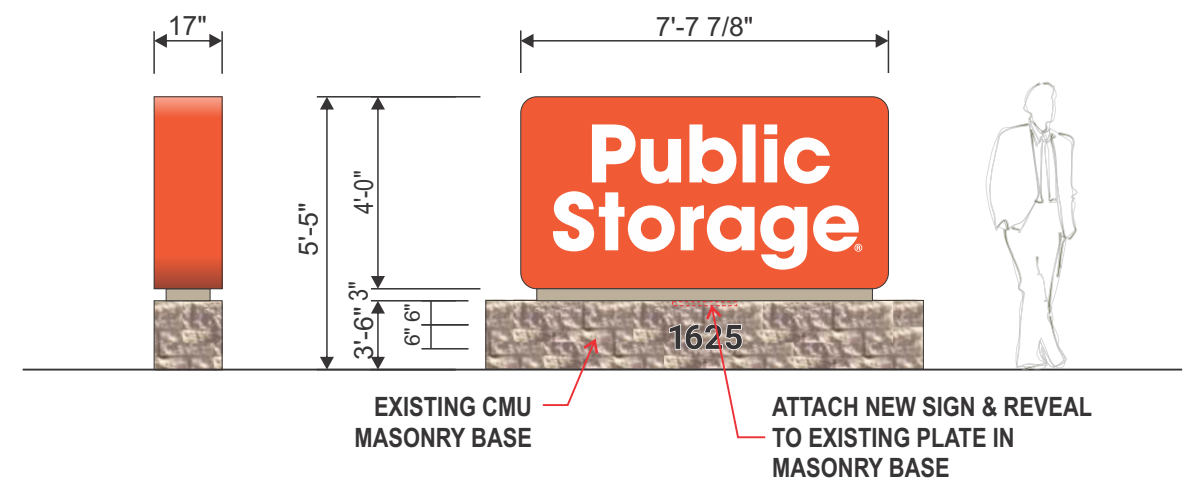


D/F MONUMENT
INSTALL NEW SIGN CABINET & REVEAL

ALLOWED SF: 36 SF
PROPOSED SF: 30.6
ALLOWED OAH: 8'-0" OAH

FIELD PAINT NOTE:
Installer is to follow the included Image National specifications exactly.
PAINT PROVIDED BY INSTALLER
• Field Applied: PPG Pitt-Tech 90-474; PPG 1024-1 "Off White"

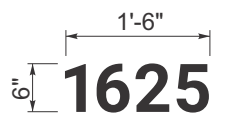
- PUBLIC STORAGE ORANGE
PPG PUBLIC STORAGE ORANGE
- OFF WHITE
PPG 1024-1



SIDE VIEW
SCALE: 1/4"=1'-0"

3 MANUFACTURE & INSTALL NEW LED ILLUMINATED D/F SIGN CABINET WITH FLEXIBLE BLEED FACES & RADIUS CORNERS ON EXISTING BASE
SCALE: 1/4"=1'-0"

- NEW ALUMINUM SIGN CABINET WITH RADIUS CORNERS AND BLEED FACE RETAINERS PAINTED PUBLIC STORAGE ORANGE
- WHITE FLEXIBLE FACE MATERIAL WITH FIRST SURFACE ORANGE VINYL & CLEAR OVERLAMINATE (NO VINYL SEAMS THROUGH COPY)
- NEW ALUMINUM REVEAL PAINTED "OFF WHITE"
- INTERNAL WHITE LED ILLUMINATION
- DISCONNECT SWITCH LOCATED ON NON-STREET SIDE OF SIGN
- NEW FCO ADDRESS NUMBERS PAINTED BLACK
- ATTACH NEW CABINET & REVEAL TO EXISTING BASE USING EXISTING MOUNTING PLATE (SEE DETAILS ON FOLLOWING PAGE 5)



FCO NUMERALS
SCALE: 1/2" = 1'-0"
LETTER AREA: .75 SF (BOXED)

1/2" THICK BLACK PAINTED ACRYLIC CUT OUT LETTERS
INSTALL ON BASE WITH STUDS

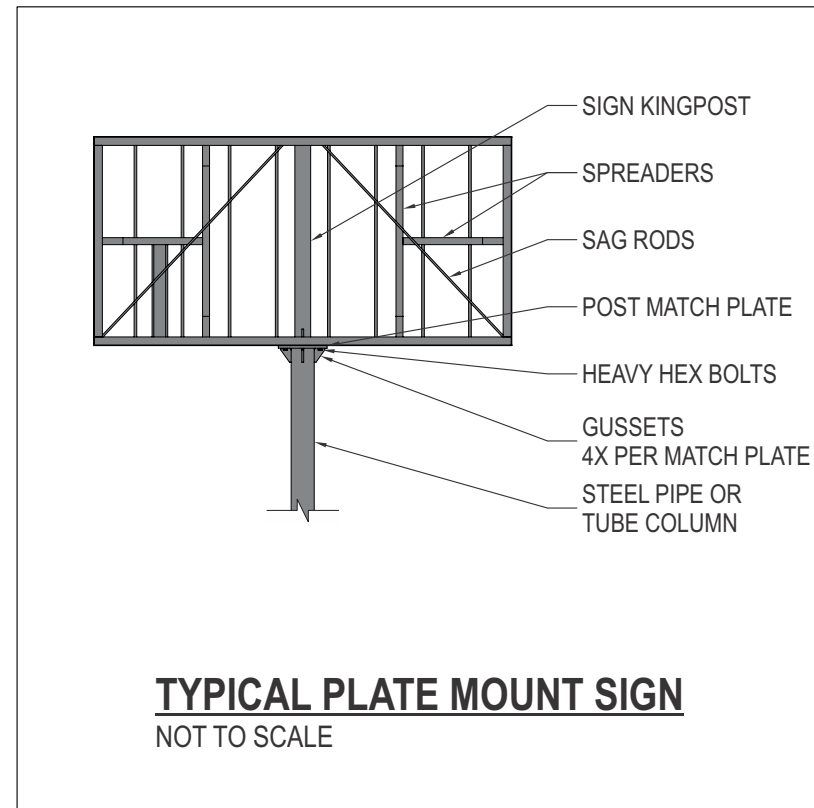
Special Notes
Recommend replacing cabinet with largest size cabinet that fits on existing base/footing. Site is multi-tenant and all signs require landlord approval.

NOTE:
Any deviations from location reference to call Image National on Site Direction.

It is the intent and purpose of this color rendering to provide a basic color representation of your sign finish and color. However, digital media and printed colors will vary from actual paint finish and color. Existing painted surfaces will have a perceptible difference in shade and sheen from your sign finish. Providing a sample of the paint you wish to match or a Matthews paint color formula will minimize the differences.

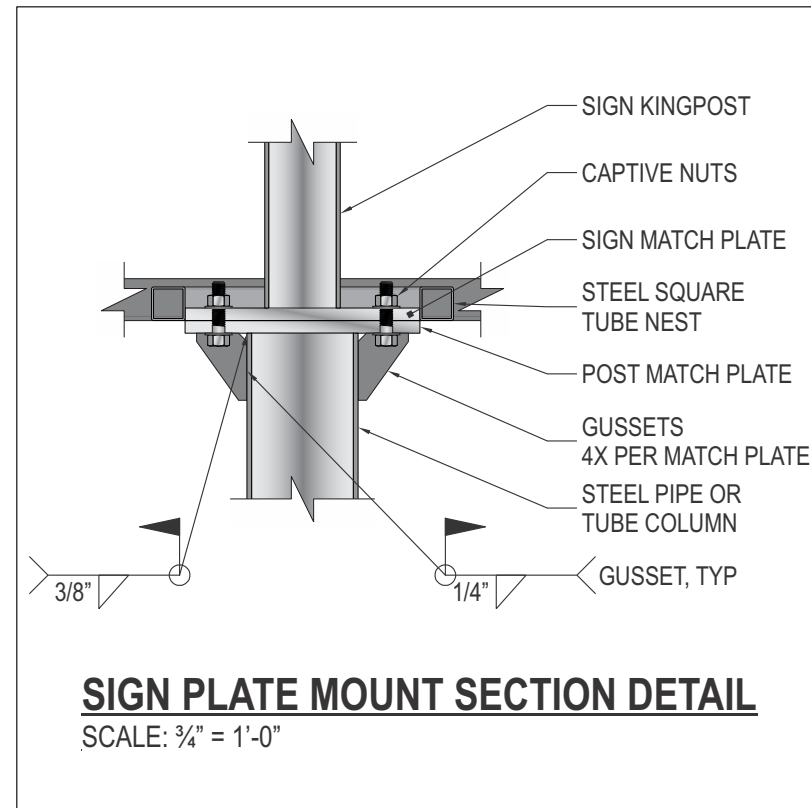
<p>...bringing your image to light!</p> <p>16265 Star Road Nampa, ID 83687 - toll free: 800.592.8058 - tele: 208.345.4020 WWW.imagenational.com</p>	UNDERWRITERS LABORATORIES ELECTRIC SIGN NANPA PLANT - UL #433195-001 <small>U.S. & P.R. - All signs conform to UL-48/2161 (labeled accordingly) & must comply with UL-41.1 install procedures. Canada - all signs must be CAS compliant. This sign(s) is intended to be installed in accordance with requirements of article 600 of the National Electrical Code and/or applicable local codes. This includes proper grounding and bonding of the sign.</small>	Client: PUBLIC STORAGE	Design Number: TG-0512-20	File Location: PBS-08035-Oakley CA-R4-101520	Page No.
		Site: SITE #08035 1625 MAIN STREET OAKLEY, CALIFORNIA 94561	Date: 10/15/20	Drawing type:	5 of 6
			Designer: CL / DF / TRH	Rev:	
		Account Manager: HS			

PLATE MOUNT SIGN



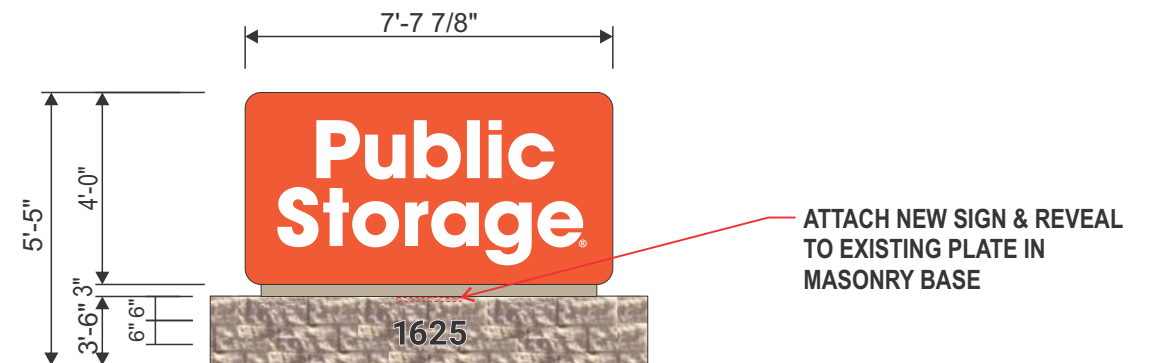
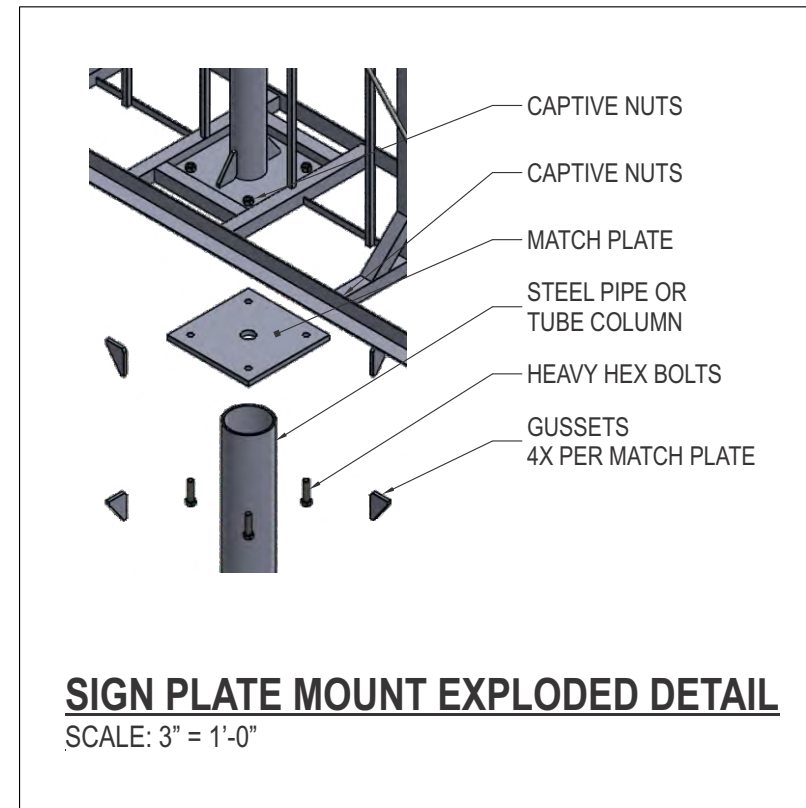
SIGN TYPE: PLATE MOUNT
ILLUMINATION: FACE
ELECTRICAL: NOT SHOWN
ATTACHMENT: NON-CORROSIVE SECUREMENT
NOTE: SEE PLATE MOUNT SECTION DETAIL

PLATE MOUNT DETAIL



NOTE: CONTACT ENGINEERING FOR APPROPRIATE PLATE AND HEAVY HEX BOLT SIZES

EXPLODED VIEW



3 EXISTING D/F MONUMENT SIGN -
 MANUFACTURE & INSTALL NEW LED ILLUMINATED D/F SIGN CABINET
 WITH FLEXIBLE BLEED FACES & RADIUS CORNERS
 SCALE: 1/4"=1'-0"

It is the intent and purpose of this color rendering to provide a basic color representation of your sign finish and color. However, digital media and printed colors will vary from actual paint finish and color. Existing painted surfaces will have a perceptible difference in shade and sheen from your sign finish. Providing a sample of the paint you wish to match or a Matthews paint color formula will minimize the differences.

<p>image national signs ...bringing your image to light!</p> <p>16265 Star Road Nampa, ID 83687 - toll free: 800.592.8058 - tele: 208.345.4020 WWW.imagenational.com</p>	<p>UL UNDERWRITERS LABORATORIES ELECTRIC SIGN</p> <p>NAMPA PLANT - UL #433195-001</p> <p><small>U.S. & P.R. - All signs conform to UL-48/2161 (labeled accordingly) & must comply with UL-41.1 install procedures. Canada - all signs must be CAS compliant. This sign(s) is intended to be installed in accordance with requirements of article 600 of the National Electrical Code and/or applicable local codes. This includes proper grounding and bonding of the sign.</small></p>	Client: PUBLIC STORAGE	Design Number: TG-0512-20	File Location: PBS-08035-Oakley CA-R4-101520	Page No.
		Site: SITE #08035 1625 MAIN STREET OAKLEY, CALIFORNIA 94561	Date: 10/15/20	Drawing type:	6 of 6
		Designer: CL / DF / TRH	Account Manager: HS	Rev:	