

**City of Oakley**

**ADDENDUM NO. 2 to contract documents for**

**CIP 208 – Laurel Road Widening (Mellowood Drive to Main Street)**

**BID OPENING DATE: THURSDAY, MAY 21, 2020 2:00 PM**

Notice is hereby given that the following clarifications and revisions are made to the above referenced contract documents:

**BID OPENING DATE IS THURSDAY, MAY 21, 2020**

Due to the COVID-19 outbreak and current shelter in place orders the Project construction start date shall be in June or later dependent upon the current order under which the City of Oakley is regulated regarding commercial construction.

**Updates to the Specifications:**

New Unit Price Schedule – USE THIS FOR BIDDING

**PART I, Pages 5-7**

**A UNIT PRICE SCHEDULE**

**Note:**

The original Bid Schedule contained two bid items that will not be included with the bid. The TWO (2) Bid Items that are being **REMOVED** from the Bid Schedule are as follows:

Bid Item 30 – Site Preparation of Disposal Site  
Bid Item 54 – Self Retaining Areas

**PART III, Earthwork Pages 40, 43, 44, and Appendix B  
Traffic Signal Video Detection Pages 76 and 78**

Updates to Disposal Site and Video Detection System. City Procured Video Detection System; Contractor responsible for maintaining and relocating during construction. Updates to Measurement and Payment for both Earthwork Section and Video Detection System Section.

  
\_\_\_\_\_  
Jason Kabalin  
Capital Projects Coordinator  
May 19, 2020

Contractor signature next page.

\_\_\_\_\_  
Contractor Signature

\_\_\_\_\_  
Date

\_\_\_\_\_  
Company Name

## A. UNIT PRICE SCHEDULE

The undersigned, Pursuant to and in compliance with your Notice to Contractors and the Contract Documents relating to the **LAUREL ROAD WIDENING PROJECT FROM MELLOWOOD TO MAIN**, including Addenda No. \_\_\_\_\_, \_\_\_\_\_, \_\_\_\_\_, as Bidder, declares that the only persons or parties interested in this proposal as principals are those named herein; that this proposal is made without collusion with any other person, firm, or corporation; that he has carefully examined the location of the proposed work, the annexed proposed form of contract, and the plans therein referred to; and he proposes and agrees if this proposal is accepted that he will contract with the City of Oakley in the form of the scope of the contract annexed hereto, to provide all necessary machinery, tools, apparatus, and other means of construction, and to do all the work and furnish all the materials specified in the contract, in the manner and time therein prescribed, and according to the requirements of the Engineer as therein set forth, and that he will take in full payment therefore the following item prices, to wit:

### BID ITEMS

ITEM NO.	DESCRIPTION OF ITEM	EST. QTY	U/M	UNIT PRICE	TOTAL
1	Mobilization (10% of Bid Items)	1	LS		
2	Traffic Control System and Construction Area Signs	1	LS		
3	Remove Tree and Tree Stumps	1	LS		
4	Storm Water Pollution Prevention Plan (SWPPP)	1	LS		
5	Storm Water Pollution Control Implementation	1	LS		
6	Remove Curb	2,320	LF		
7	Remove Curb and Gutter	575	LF		
8	Remove Concrete Sidewalk	4,000	SF		
9	Remove Median Paving	5,450	SF		
10	Remove HMA Dike	1,740	LF		
11	Relocate Sign	1	EA		
12	Orange Construction Fence	470	LF		
13	HMA (TYPE A)	2,820	TON		
14	HMA Dike	710	LF		
15	RHMA-G	1,620	TON		
16	Paving Mat	4,000	SY		
17	2" AC Grind	6,320	SY		
18	Conform Grind	670	LF		
19	4" Base Repair	2,618	SF		

ITEM NO.	DESCRIPTION OF ITEM	EST. QTY	U/M	UNIT PRICE	TOTAL
20	City Standard Sidewalk	8,040	SF		
21	PCC Maintenance Band	1,875	SF		
22	Stamped Concrete (for color and finish only)	1,875	SF		
23	City Standard Curb & Gutter	1,600	LF		
24	City Standard Vertical Curb	2,300	LF		
25	City Standard Driveway	310	SF		
26	Curb Ramp (Caltrans Case A)	5	EA		
27	Curb Ramp (Caltrans Case C)	1	EA		
28	Retaining Curb	140	LF		
29	Aggregate Base (CL-2)	3,210	CY		
30	Roadway Excavation	4,255	CY		
31	Common Excavation	2,200	CY		
32	Common Backfill	10	CY		
33	Adjust Utility Structures to Grade	5	EA		
34	Adjust DWD Structures to Grade	14	EA		
35	Adjust ISD Structures to Grade	5	EA		
36	Traffic Rated Box	3	EA		
37	Reconstruct Monument	1	EA		
38	1" Water Meter (DWD Revocable)	1	EA		
39	Slurry Cap	1	LS		
40	City Standard Inlet	6	EA		
41	Modified G2 Inlet	1	EA		
42	Cap Inlet	1	EA		
43	Storm Drain Manhole	4	EA		
44	12" HDPE SD Pipe	195	LF		
45	Reconstruct Storm Drain Manhole	3	EA		
46	Signing and Striping	1	LS		
47	Remove Traffic Striping and Markings and Prepare Lead Compliance Plan	1	LS		

ITEM NO.	DESCRIPTION OF ITEM	EST. QTY	U/M	UNIT PRICE	TOTAL
48	Lighting and Electrical Systems	1	LS		
49	Traffic Signal Systems	1	LS		
50	Landscape Planting	1	LS		
51	Irrigation	1	LS		
52	Bioretention Area	1	LS		

**Total Bid (Items 1-52) \$ \_\_\_\_\_**  
(Numbers)

\_\_\_\_\_ Dollars

**(Written)**

The project requires bids to include prices for items that may be added to or deducted from the scope of the work in the contract for which the bid is being submitted.

City shall have the right to remove Bid Item 39 from the contract scope of work and have those items of work performed by Diablo Water District's (DWD) contractor. City's contractor shall coordinate and provided for DWD's contractor to perform traffic control and perform the work indicated in Bid Item 39 that may have been removed. City's contractor shall provide ten (10) consecutive calendar days working period, for DWD's contractor to perform the work in Bid Item 39, if the bid item work is performed by DWD's contractor. In the event DWD's contractor performs the work in Bid Item 39, DWD's contractor shall be responsible for the AC patch paving around the valve cans. City's contractor shall not be entitled to any additional time extension or compensation, including overhead or profit, in the event any of Bid Item 39 are removed from the project scope and the amounts entered in the Bid Schedule for the remainder of the work shall remain unchanged. City shall notify City's contractor if it will be removing any of the items from the scope of work within ten (10) working days after the Notice of Award.

Pursuant to the Public Contract Code § 20103.8c the lowest bid shall be "the lowest total of the bid prices on the base contract and those additive or deductive items that when taken in order from a specifically identified list of those items in the solicitation, and added to, or subtracted from, the base contract, are less than, or equal to, a funding amount publicly disclosed by the local agency before the first bid is opened." In this case, the funding amount publically disclosed is the Engineer's Estimate, which totals \$3,592,100.

Abandoned sewers, piping, and other utilities encountered in the progress of the excavating shall be removed and the ends plugged.

Active utility lines encountered, which are not indicated in the Contract Documents, shall be reported immediately to the Engineer and utility owners involved. The Engineer and utility owners shall be permitted free access to determine the measures deemed necessary to repair, relocate, or remove the utility.

#### Erosion and Dust Control

Comply with requirements of 10-1.05, Water Pollution Control, and 10-1.06, Temporary Drainage Inlet Protection.

#### Site Preparation of Disposal Site

Contractor shall prepare and maintain the disposal site at the City of Oakley parcel located 400 feet north of the intersection of Main Street and Norcross Avenue, see Appendix B, for the duration of the Project. It shall be the responsibility of the contractor to maintain erosion and dust control of the site, coordinate ingress and egress to the site, sweep streets, maintain circulation throughout the disposal site, and coordinate stockpile locations and rough grading and compaction of excavated materials with the Engineer.

#### Clearing and Grubbing

Clear and Grub site in conformance with Section 17-2 "Clearing and Grubbing", of the Standard Specifications.

#### Excavation

Perform excavation as indicated and required for roadway, median, planting areas, sidewalk and conform areas.

The bottoms of excavations shall be level, firm, undisturbed earth, clean and free from loose material, debris, and foreign matter.

Sawcut existing pavement and/or pavement edge to a neat line, protect vertical edge.

Excavate to the lines and grades indicated or as necessary in order to complete the Work.

Limits of excavations shall allow for adequate working space for personnel and equipment, and as required for safety of personnel.

Dewater excavation as directed by Engineer. Construct berms around excavations as required to prevent surface water and runoff from entering the excavation.

Remove unstable bottom material. Remove large stones, debris, and compressible soils from excavation bottoms to a minimum depth of 12 inches. Remove loose and unsound material.

Portions of roadbed contain Sierracrete as a base material. Sierracrete shall be completely removed from the roadbed. Approximate depths of Sierracrete are included in the Plans. At Laurel Road and Harvest Drive, Contractor shall pothole to determine northern limits of Sierracrete prior to excavation. Contractor shall notify City Engineer if Sierracrete is found outside the limit shown on the Plans.

Except as otherwise indicated, preserve the material below and beyond the lines of excavations. Where an excavation is carried below the indicated grade, backfill to the indicated grade as herein

landscape planting, coordinate with requirements of Section 10-1.24, Landscape Planting.

#### Quality Control

The Contractor shall perform inspection and any required field tests to determine compliance with specified requirements for materials, density, and compaction of the earthwork.

### **MEASUREMENT AND PAYMENT**

Quantities will be computed based on the neat lines or pay lines, section profiles, contours, and dimensions indicated on the Plans.

The upper limit for payment of common excavations in unpaved areas shall be the ground surface as it existed prior to the start of construction operations.

The upper limit for payment of roadway excavations in paved areas shall be the top of pavement at the time the excavation is made.

The upper limit for payment of backfill, when not indicated, shall be the finished grade indicated.

The lower limits for computing pay quantities of excavation and backfill shall be a plane at the bottom of the completed roadway, median, sidewalk and conform areas.

Full compensation for preparation of subgrade, includes, but is not limited to, all labor, materials, tools, equipment, and incidentals required to conform to the provisions of this section shall be considered as included in the prices paid for other items of work and no separate payment will be made therefor. Additionally, no payment will be made for work, equipment, or materials not covered in these plans and specifications, but necessary to insure a completed project as specified.

Full compensation for preparation of disposal site, includes, but is not limited to, all labor, materials, tools, equipment, and incidentals required for doing all work involved with preparation of disposal site, including dust control, access control, street sweeping, grading and compaction for designated City disposal site conforming to the provisions of this section shall be considered as included in the prices paid for other items of work and no separate payment will be made therefor. Additionally, no payment will be made for work, equipment, or materials not covered in these plans and specifications, but necessary to insure a completed project as specified

ROADWAY EXCAVATION shall be at the cost indicated in the Bid Schedule. The contract prices paid per cubic yard for ROADWAY EXCAVATION shall include, but is not limited to, full compensation for furnishing all labor, materials, tools, equipment, and incidentals required for doing all the work involved with roadway excavation, including sawcutting, removal and disposal of asphalt concrete pavement, base material, and subgrade/native material to the lines and grades shown on the Plans and which conflict with the work, dewatering, shoring and underpinning, segregating and stockpiling material, rehandling of stockpiled material, subgrade preparation, excavation support and protection, disposal of unsuitable material, testing and off-hauling of material and surplus material, as specified in the Standard Specifications, these Technical Specifications and the Special Provisions, and as directed by the Engineer. Additionally, no payment will be made for work, equipment, or materials not covered in these plans and specifications, but necessary to insure a completed project as specified.

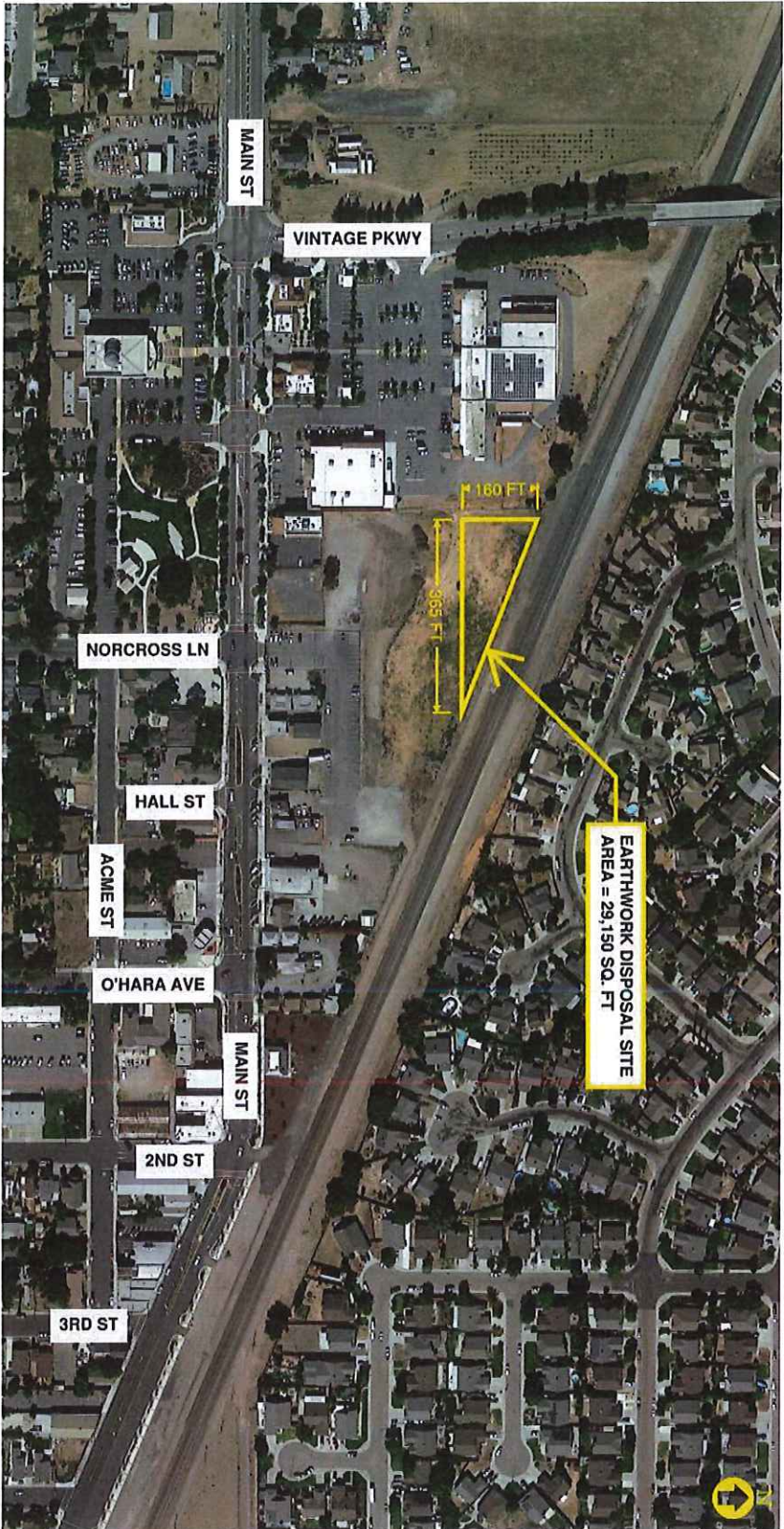
COMMON EXCAVATION shall be at the cost indicated in the Bid Schedule. The contract prices

paid per cubic yard for COMMON EXCAVATION shall include, but is not limited to, full compensation for furnishing all labor, supervision, materials, tools, equipment, and incidentals required for doing all the work involved with common excavation, including dewatering, shoring and underpinning, segregating and stockpiling material, rehandling of stockpiled material, subgrade preparation, excavation support and protection, site clearing and grubbing, disposal of unsuitable material, testing and off-hauling of material and surplus material as shown on the Plans, as specified in the Standard Specifications, these Technical Specifications and the Special Provisions, and as directed by the Engineer. Additionally, no payment will be made for work, equipment, or materials not covered in these plans and specifications, but necessary to insure a completed project as specified.

COMMON BACKFILL shall be at the cost indicated in the Bid Schedule. The contract prices paid per cubic yard for COMMON BACKFILL shall include, but is not limited to, full compensation for furnishing all labor, supervision, materials, tools, equipment, and incidentals required for doing all the work involved with common backfill, including compaction, rehandling of stockpiled material, drain ditches, and slope rounding, as shown on the Plans, as specified in the Standard Specifications, these Technical Specifications and the Special Provisions, and as directed by the Engineer. Additionally, no payment will be made for work, equipment, or materials not covered in these plans and specifications, but necessary to insure a completed project as specified.



**CIP 208 LAUREL ROAD STREET WIDENING  
FROM MELLOWOOD DRIVE TO MAIN STREET  
Oakley, California**



**EARTHWORK DISPOSAL SITE**

### LED Safety Lighting

LED safety lighting shall conform to Section 86-1.02K(2), "LED Luminaires," of the Standard Specifications.

All new intersection and non-intersection cobra head style and theme lighting shall be Light Emitting Diode (LED).

### LED Street Name Sign

The Contractor shall supply and install Southern Manufacturing Clean Profile LED illuminated street name sign, or approve equal

### Warranty Agreement

The traffic signal systems and equipment, and all improvements installed under these specifications, shall be covered by the Warranty and Repair Agreement found in the Proposal and Contract Book. The Contractor prior to acceptance of the work as complete shall execute this agreement.

### Workmanship

All facilities shall be installed in a professional and workmanlike manner. Any portion of the signal system, which is not installed in a professional manner, shall be removed and reinstalled correctly, to the satisfaction of the Engineer.

## **CONSTRUCTION**

All Work shall be in compliance with the requirements of the applicable sections of the Caltrans Standard Specifications and the Caltrans Standard Plans. In case of conflict, the higher requirement shall govern.

All Work and material shall be protected at all times. Pipe openings shall be closed with protective caps during installation and all materials shall be covered and protected against dirt, water and mechanical or other injury. All materials damaged during the course of construction shall be replaced or repaired to original condition by the Contractor.

The Contractor shall not allow or cause any of his Work to be covered up or enclosed until it has been inspected and approved by the Engineer. Should any of the Work be enclosed or covered up before such inspection, the Contractor shall, at his own expense, uncover the Work and, after it has been inspected and approved, make all repairs with such material as may be necessary to restore all Work to its original and proper condition.

The Contractor shall conduct exploratory excavations by potholing to verify or to discover the actual locations and the size of existing underground utilities and improvements. Potholing shall be done at each proposed location of light poles to occur at least fourteen (14) calendar days in advance of any excavation or construction in that area, to avoid possible delay in the progress of the Work.

The Contractor's proposed method of potholing and schedule for potholing shall be submitted to the Engineer for approval, at least one week prior to the commencement of operation. Any utilities damaged during potholing shall be immediately reported to the Engineer and repairs made immediately in accordance with the requirements of this Contract.

### Foundations

Foundations shall be placed at the back edge of a 4ft or 6ft sidewalk, or, 3ft from face of curb in a

have been installed, and conduits have been bonded and grounded. A continuous No. 8 ground shall be installed in all conduits. All pullboxes shall be inspected and approved prior to pulling any conductors. Conductors shall not be pulled into conduits unless the Engineer is present to observe the operation. The ends of all unused cables shall be sealed.

#### Pedestrian Signals (Countdown)

Gaskets for the mounting of pedestrian signal heads shall be installed on the outside of the housing to provide a watertight seal, and the Contractor shall take extra care to ensure that the gaskets are properly installed.

#### Video Detection System

For the relocation of Iteris video camera, the Contractor shall arrange to have a technician qualified to work on the video detection system and employed by Iteris, or his/her representative present to setup and configure the System. The City Traffic Engineer shall be notified prior to completion of Video Detection System relocation at the intersection. All Video Detection System equipment installation, cable termination, connections, camera alignment procedures, system setup, configuration, and programming of detector zones shall be completed prior to or during the pre turn-on work.

For the duration of the Project, should the detection zones need to be adjusted due to change in stage construction, the Contractor shall arrange to have a technician qualified to work on the video detection system and employed by Iteris, or his/her representative present to configure the System. The Contractor shall coordinate with the City's Traffic Engineer for alignment of video detection zones at each stage.

#### Field Tests

Field tests shall conform to Section 87-1.01D(2), "Quality Control," of the Standard Specifications except as modified herein.

The Contractor shall be responsible for maintaining the lighting system during the functional test period. Payment for testing shall be the responsibility of the Contractor.

#### Pole Identification Plates

The City Engineer will assign pole identification numbers as required. The Contractor shall furnish and install pole identification plates at the request of the City and as indicated in the City of Oakley Standard Plans, and as directed by the City Engineer.

### **MEASUREMENT AND PAYMENT**

TRAFFIC SIGNAL shall be at the cost indicated in the Bid Schedule. The contract lump sum price paid for TRAFFIC SIGNAL shall include, but is not limited to, full compensation for furnishing all labor, materials, tools, equipment, testing, and incidentals, including , pull boxes, conduit and wires, foundations, relocation of video detection camera, installation of SIC cable, jack and bore, transporting City furnished material, and functional testing, required for doing all the work involved in completing the lighting and electrical systems work as shown on the Plans, as specified in the Standard Specifications, these Technical Specifications and the Special Provisions, and as directed by the Engineer. Additionally, no payment will be made for work, equipment, or materials not covered in these plans and specifications, but necessary to insure a completed project as specified.