

Appendix A:
Land Evaluation and Site Assessment Model

THIS PAGE INTENTIONALLY LEFT BLANK

Land Capability Classification (LCC) and Storie Index Scores

Soil Map Unit	Project Acres	Proportion of Project Area	LCC	LCC Rating	LCC Score	Storie Index	Storie Index Score
DaC	9.96	1	III s	60	60	49	49
					0		0
					0		0
					0		0
					0		0
					0		0
TOTAL	9.96	1		60	60	49	49

Total Acres

Total Class I	Total Class II	Total Class III	Total Class IV	Total Class V
0	0	9.96	0	0

Project Size Score

LCC Class I-II	LCC Class III	LCC Class IV-VIII
----------------	---------------	-------------------

Total Acres
 Project Size Scores

Highest Project Size Score

Table 3-Proj. Size Scoring

LCC Class I-II		LCC Class III		LCC Class IV-VIII	
Acres	Score	Acres	Score	Acres	Score
80 +	100	160 +	100	320 +	100
60-79	90	120-159	90	240-319	80
40-59	80	80-119	80	160-239	60
20-39	50	60-79	70	100-159	40
10-19.	30	40-59	60	40-99	20
fewer than 10	0	20-39	30	fewer than 40	0
		10-19.	10		
		fewer than 10	0		

Total Acres
 Total Class I Total Class II Total Class III Total Class IV Total Class V

		9.96	0	0
Total Acres	0	9.96		0
Score	0	0		0
TOTAL PROJECT SIZE RATING=		0		

Project Portion	Water Source	Proportion	Water Availability Score	Weighted Availability Score (C x D)
1	Irrigation District Water Only			0
2	Groundwater only			0
3	Both irrigation and ground	100%	85	85
4	Not irrigated at all			0
		Total	1 Total water resource score	85

Table 5. Water Resource Availability Scoring

Option	Non-Drought Years			Drought Years			WATER RESOURCE SCORE
	RESTRICTIONS			RESTRICTIONS			
	Irrigated Production Feasible?	Physical Restrictions ?	Economic Restrictions ?	Irrigated Production Feasible?	Physical Restrictions ?	Economic Restrictions ?	
1	YES	NO	NO	YES	NO	NO	100
2	YES	NO	NO	YES	NO	YES	95
3	YES	NO	YES	YES	NO	YES	90
4	YES	NO	NO	YES	YES	NO	85
5	YES	NO	NO	YES	YES	YES	80
6	YES	YES	NO	YES	YES	NO	75
7	YES	YES	YES	YES	YES	YES	65
8	YES	NO	NO	NO	--	--	50
9	YES	NO	YES	NO	--	--	45
10	YES	YES	NO	NO	--	--	35
11	YES	YES	YES	NO	--	--	30
12	Irrigated production not feasible, but rainfall adequate for dryland production in both drought and non-drought years						25
13	Irrigated production not feasible, but rainfall adequate for dryland production in non-drought years (but not in drought years)						20
14	Neither irrigated nor dryland production feasible						0

Table 6: Surrounding Ag Land Rating

Percent of Project's Zone of Influence	Surround Ag Land Score
90-100%	100 points
80-89	90
75-79	80
70-74	70
65-69	60
60-64	50
55-59	40
50-54	30
45-49	20
40-44	10
<40	0

Table 7: Surrounding Protected Resource Land Score

Percent of Project's Zone of Influence	Surround Ag Land Score
90-100%	100 points
80-89	90
75-79	80
70-74	70
65-69	60
60-64	50
55-59	40
50-54	30
45-49	20
40-44	10
<40	0

Section III. Weighting of Factors and Final LESA Scoring

The California LESA Model is weighted so that 50 percent of the total LESA score of a given project is derived from the Land Evaluation factors, and 50 percent from the Site Assessment factors. Individual factor weights are listed below, with the sum of the factor weights required to equal 100 percent.

Land Evaluation Factors

Land Capability Classification	25%
Storie Index Rating	25%
Land Evaluation Subtotal	50%

Site Assessment Factors

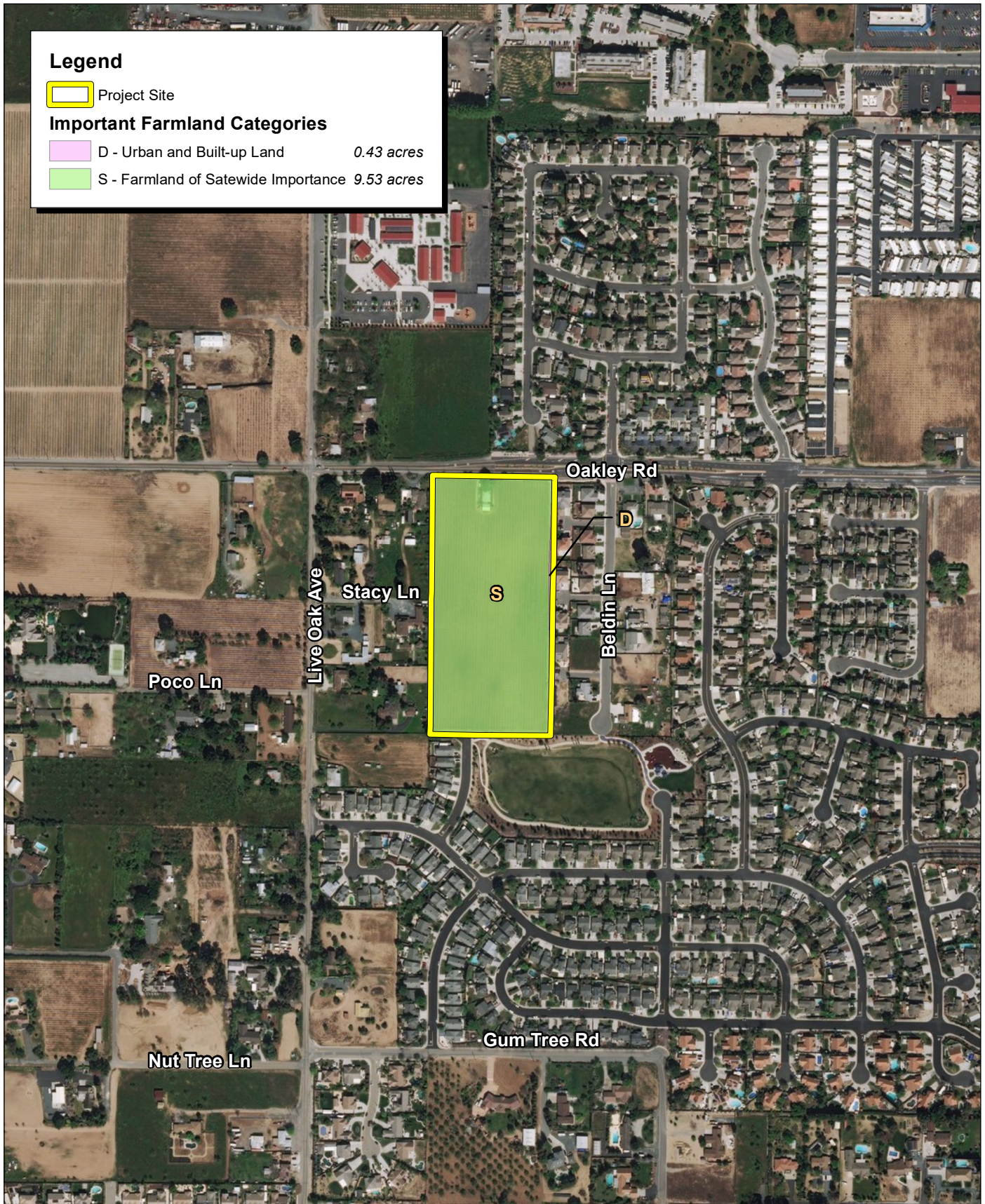
Project Size	15%
Water Resource Availability	15%
Surrounding Agricultural Lands	15%
Surrounding Protected Resource Lands	5%
Site Assessment Subtotal	50%
Total LESA Factor Weighting	100%

Each factor is measured separately (each on 100 point scale) and entered in the appropriate line in **Column B** of the **Final LESA Scoresheet** (Table 8). Each factor's score is then multiplied by its respective factor weight, resulting in a weighted factor score in **Column D** as indicated in Table 8. The weighted factor scores are summed, yielding a Total LESA Score (100 points maximum) for a given project, which is entered in **Line 7** of **Column D**.

Factor Name	Factor Rating (0-100 points)	X	Factor Weighting (Total=1.0)	=	Weighted Factor Rating
Land Evaluation					
1. Land Capability Classification	60		0.25		15
2. Storie Index Rating	49		0.25		12.25
Site Assessment					
1. Project Size	0		0.15		0
2. Water Resource Availability	85		0.15		12.75
3. Surrounding Agricultural Lands	0		0.15		0
4. Protected Resource Lands	0		0.05		0
				TOTAL	40

Table 9. California LESA Model Scoring Thresholds

Total LESA Score	Scoring Decision
0 to 39 Points	Not Considered Significant
40 to 59 Points	Considered Significant <u>only</u> if LE <u>and</u> SA subscores are each <u>greater</u> than or equal to 20 points
60 to 79 Points	Considered Significant <u>unless</u> either LE <u>or</u> SA subscore is <u>less</u> than 20 points
80 to 100 Points	Considered Significant



Legend

Project Site

Important Farmland Categories

D - Urban and Built-up Land 0.43 acres

S - Farmland of Statewide Importance 9.53 acres

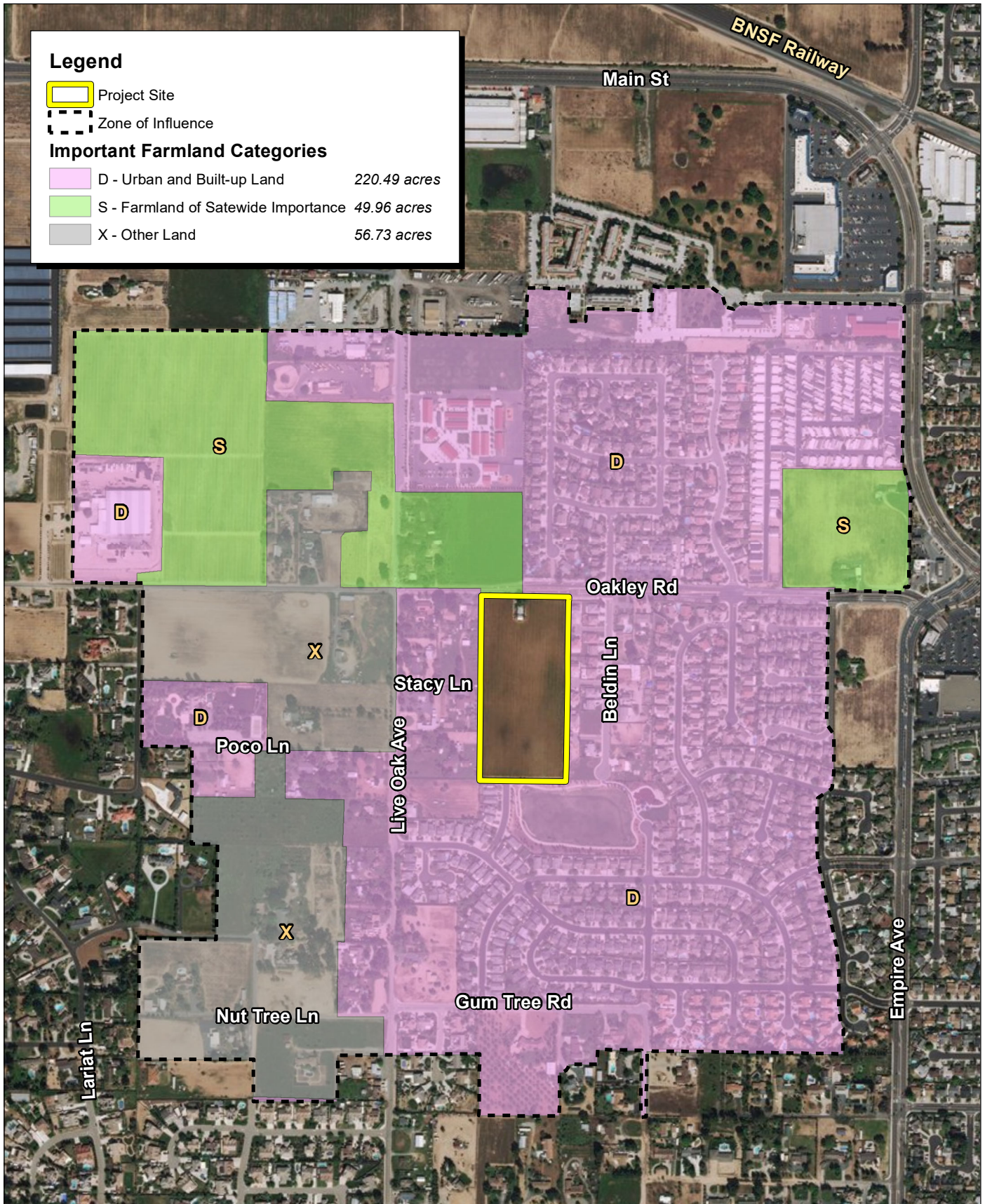
Source: ESRI Aerial Imagery. CA Department of Conservation Contra Costa County FMMP, 2016.





Source: ESRI Aerial Imagery, CA Department of Conservation Contra Costa County FMMP, 2016.





Legend

- Project Site
- Zone of Influence

Important Farmland Categories

	D - Urban and Built-up Land	220.49 acres
	S - Farmland of Statewide Importance	49.96 acres
	X - Other Land	56.73 acres

Source: ESRI Aerial Imagery. CA Department of Conservation Contra Costa County FMMP, 2016.



THIS PAGE INTENTIONALLY LEFT BLANK