

City of Oakley

ADDENDUM NO. 1 to contract documents for
LAUREL ROAD WIDENING PROJECT, CIP # 196

BID OPENING DATE: November 20th, 2018 2:00 PM

Notice is hereby given that the following clarifications and revisions are made to the above referenced contract documents:

Updates to the Plans and Specifications pages:

Specifications Part I:

- Updated A. Unit Price Schedule
- Removed Paving Mat Bid Item
- Updated City Standard Driveway Quantity
- Updated Aggregate Base (CL-2) Quantity

Specifications Part III:

- Deleted Section 10-1.12, Paving Mat

Plans:

- Updated Sheets DM-4, S-1 to S-4, CD-5, GD-4 and U-2

All bidders shall acknowledge receipt and acceptance of Addendum No. 1 by signing in the space provided at the end of this Addendum and submitting the signed addendum with their proposal.



James Katsch

Associate City Engineer

11-13-18

Date

Contractor Signature

Date

Company Name

A. UNIT PRICE SCHEDULE

The undersigned, Pursuant to and in compliance with your Notice to Contractors and the Contract Documents relating to the **LAUREL ROAD WIDENING PROJECT**, including Addenda No. _____, _____, _____, as Bidder, declares that the only persons or parties interested in this proposal as principals are those named herein; that this proposal is made without collusion with any other person, firm, or corporation; that he has carefully examined the location of the proposed work, the annexed proposed form of contract, and the plans therein referred to; and he proposes and agrees if this proposal is accepted that he will contract with the City of Oakley in the form of the scope of the contract annexed hereto, to provide all necessary machinery, tools, apparatus, and other means of construction, and to do all the work and furnish all the materials specified in the contract, in the manner and time therein prescribed, and according to the requirements of the Engineer as therein set forth, and that he will take in full payment therefore the following item prices, to wit:

BID ITEMS

ITEM NO.	DESCRIPTION OF ITEM	EST. QTY	U/M	UNIT PRICE	TOTAL
1	Mobilization (10% of Bid Items)	1	LS		
2	Traffic Control System and Construction Area Signs	1	LS		
3	Clearing and Grubbing	10,300	SY		
4	Remove Tree	2	EA		
5	Storm Water Pollution Prevention Plan (SWPPP)	1	LS		
6	Storm Water Pollution Control Implementation	1	LS		
7	Remove and Dispose of Valley Gutter and Base	630	SF		
8	Remove and Dispose of Curb and Gutter, Curb and Dikes	420	LF		
9	Remove and Dispose of Bollard	10	EA		
10	Relocate Mailbox	2	EA		
11	Remove Traffic Striping and Markings and Prepare Lead Compliance plan	1	LS		
12	HMA (TYPE A)	3,600	TON		
13	HMA (TYPE A) (REVOCABLE)	300	TON		
14	HMA Dike (REVOCABLE)	210	LF		
15	RHMA-G	1,200	TON		
16	2" AC Grind	40	SY		
17	Conform Grind	110	LF		
18	Conform Grind (REVOCABLE)	140	LF		

ITEM NO.	DESCRIPTION OF ITEM	EST. QTY	U/M	UNIT PRICE	TOTAL
19	City Standard Sidewalk	7,600	SF		
20	City Standard Driveway	620	SF		
21	City Standard Curb & Gutter	1,895	LF		
22	City Standard Vertical Curb	2,500	LF		
23	City Standard Valley Gutter	490	SF		
24	Curb Ramp (Caltrans Case A)	2	EA		
25	Retaining Curb	250	LF		
26	Deepened Curb	535	LF		
27	Reinforced Concrete Bus Pad	942	SF		
28	PCC Maintenance Band	1,815	SF		
29	Redwood Header	1,000	LF		
30	Aggregate Base (CL-2)	4,110	CY		
31	Roadway Excavation	3,255	CY		
32	Roadway Excavation (REVOCABLE)	150	CY		
33	Common Excavation	8,425	CY		
34	Common Backfill	150	CY		
35	Adjust Utility Structures to Grade	1	LS		
36	New City Standard Inlet	8	EA		
37	New SDMH	1	EA		
38	New Modified G2 Inlet	1	EA		
39	New Modified Inlet	1	EA		
40	18" HDPE SD Pipe	965	LF		
41	12" HDPE SD Pipe	350	LF		
42	Signing and Striping	1	LS		
43	Relocate Air Relief Valve (DWD-REVOCABLE)	1	EA		
44	1" Water Service (DWD-REVOCABLE)	2	EA		
45	Relocate Water Valve and Water Line	1	LS		
46	Landscape Planting	1	LS		

ITEM NO.	DESCRIPTION OF ITEM	EST. QTY	U/M	UNIT PRICE	TOTAL
47	Landscape Irrigation	1	LS		
48	Lighting and Electrical Systems	1	LS		
49	Bioretention Areas	1	LS		

City shall have the right to remove Bid Items 13, 14, 18 and 32 from the contract scope of work.

City shall have the right to remove Bid Items 43 and 44 from the contract scope of work and have those items of work performed by Diablo Water District's (DWD) contractor. City's contractor shall coordinate and provided for DWD's contractor to perform traffic control and perform the work indicated in Bid Items 43 and 44 that may have been removed. City's contractor shall provide ten (10) consecutive calendar days working period, for DWD's contractor to perform the work in Bid Items 43 and 44, if the bid item work is performed by DWD's contractor. In the event DWD's contractor performs the work in Bid Items 43 and 44, DWD's contractor shall be responsible for the AC patch paving around the valve cans. City's contractor shall not be entitled to any additional time extension or compensation, including overhead or profit, in the event any of Bid Items 43 and 44 are removed from the project scope and the amounts entered in the Bid Schedule for the remainder of the work shall remain unchanged. City shall notify City's contractor if it will be removing any of the items from the scope of work within ten (10) working days after the Notice of Award.

Total Bid (Items 1-49) \$ _____
(Numbers)

Dollars

(Written)

The Laurel Road Widening requires bids to include prices for items that may be added to or deducted from the scope of the work in the contract for which the bid is being submitted.

Pursuant to the Public Contract Code § 20103.8c the lowest bid shall be "the lowest total of the bid prices on the base contract and those additive or deductive items that when taken in order from a specifically identified list of those items in the solicitation, and added to, or subtracted from, the base contract, are less than, or equal to, a funding amount publicly disclosed by the local agency before the first bid is opened." In this case, the funding amount publically disclosed is the Engineer's Estimate, which totals \$3,850,000.

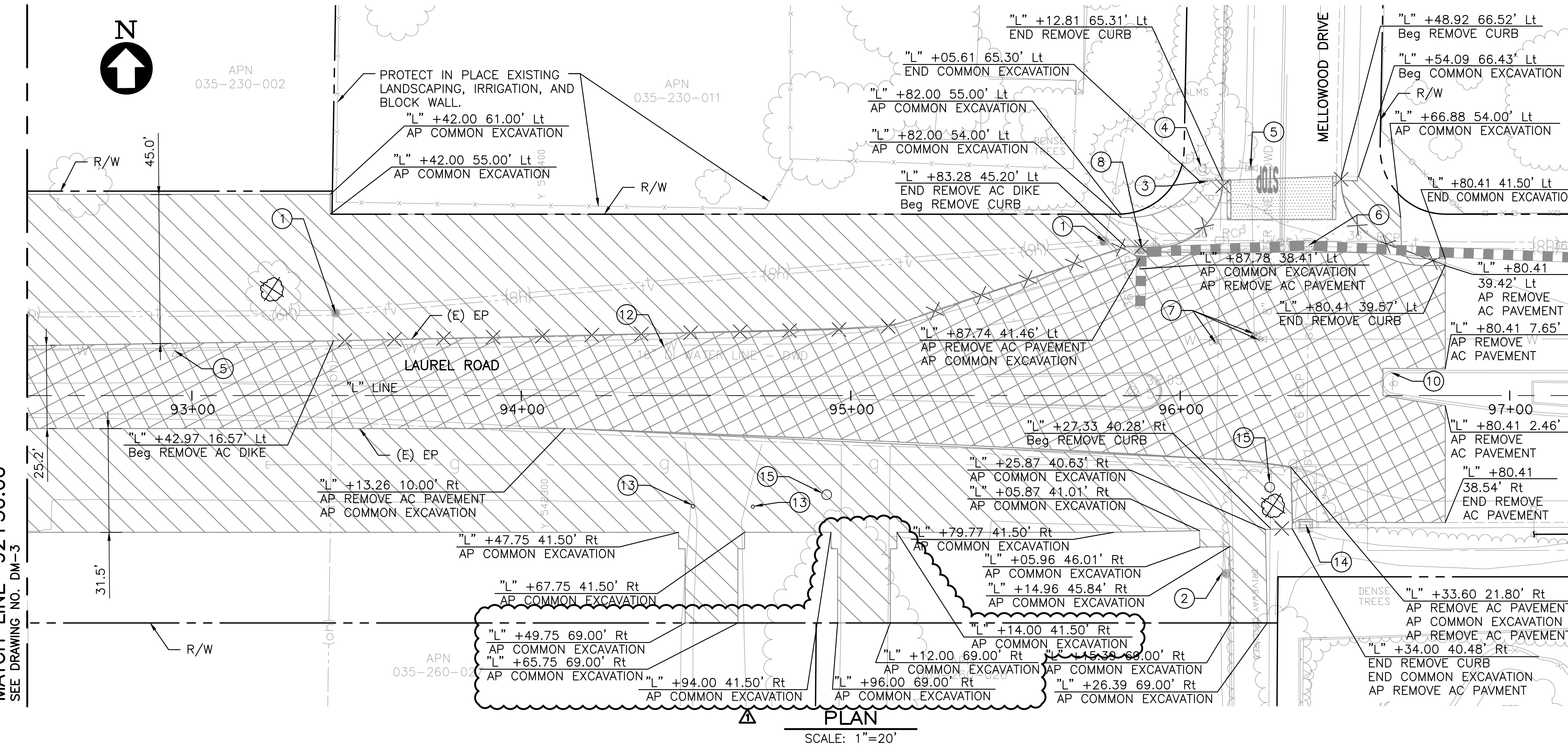
10-1.12 NOT USED

NOTES:

- THIS PLAN IS ACCURATE FOR DEMOLITION WORK ONLY.
- FOR GEOMETRY OF CONTROL LINE, SEE KEY MAP.
- SAWCUT EXISTING PAVEMENT AND/OR PAVEMENT EDGE TO A NEAT LINE, PROTECT VERTICAL EDGE.
- NO COMPACTION OR EXPANSION FACTORS HAVE BEEN APPLIED.
- REMOVE MEDIAN, SIDEWALK AND GUTTER TO NEAREST SCOREMARK JOINT.
- THE LINES AND THICKNESS SHOWN FOR THE REMOVAL OF PAVEMENT, CURB AND GUTTER, SIDEWALK AND ALL OTHER CIVIL CONSTRUCTION WORK ARE FOR INFORMATION ONLY. IT SHALL BE THE CONTRACTOR'S RESPONSIBILITY TO DETERMINE THE EXTENT OF WORK BASED ON THE SPACE REQUIRED TO PERFORM THE CONSTRUCTION WORK AND/OR THE CONTRACTOR'S MEANS AND METHODS AND REQUIREMENTS FOR SHORING, EXCAVATION AND TEMPORARY SUPPORT.
- CONTRACTOR SHALL BE RESPONSIBLE FOR THE PROTECTION OF ANY BENCHMARK OR MONUMENTATION. IF A BENCHMARK OR MONUMENTATION IS DISTURBED, THE CONTRACTOR SHALL HAVE A LICENSED LAND SURVEYOR RESTORE THE BENCHMARK OR MONUMENTATION AT THE CONTRACTOR'S EXPENSE.
- PAVEMENT, AGGREGATE BASE AND SUBGRADE MATERIAL SHALL BE REMOVED TO THE LINES AND GRADES SHOWN ON THESE PLANS.
- FOR CUT AND FILL INFORMATION, SEE GRADING PLANS.
- FOR RELOCATION OF UTILITIES IN CONFLICT WITH THE WORK, SEE UTILITY PLANS.
- IN AREAS TO RECEIVE OVERLAY, UTILITIES SHALL BE LOWERED FOR GRINDING OPERATIONS AND REVISED TO FINAL GRADE.
- COORDINATION LINE AND CIP 191 IMPROVEMENTS SHOWN FOR REFERENCE ONLY. CONTRACTOR SHALL COORDINATE WITH WORK DONE BY OTHERS AT THE INTERSECTION OF LAUREL ROAD/ROSE AVENUE FOR CIP 191. CONTRACTOR IS RESPONSIBLE FOR ALL WORK SHOWN ON THESE PLANS.
- CONTRACTOR SHALL COORDINATE WITH ON-SITE IMPROVEMENTS FOR DUARTE RANCH (9027). POLE AND GUY WIRE TO BE REMOVED (BY OTHERS) PRIOR TO DRIVEWAY INSTALLATION.

LEGEND:

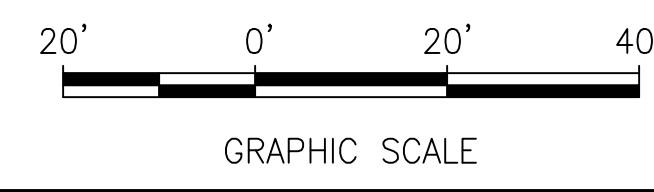
- REMOVE CONCRETE PAVEMENT AND BASE MATERIAL (SEE NOTE 8)
- ROADWAY EXCAVATION (SEE NOTE 8)
- ROADWAY EXCAVATION (REVOCABLE)
- 2" AC GRIND
- COMMON EXCAVATION (SEE NOTE 8)
- REMOVE CURB & GUTTER, CURB & DIKES
- REMOVE TREE
- (E) TREE
- (E) WOOD POLE
- (E) SIGN STRUCTURE



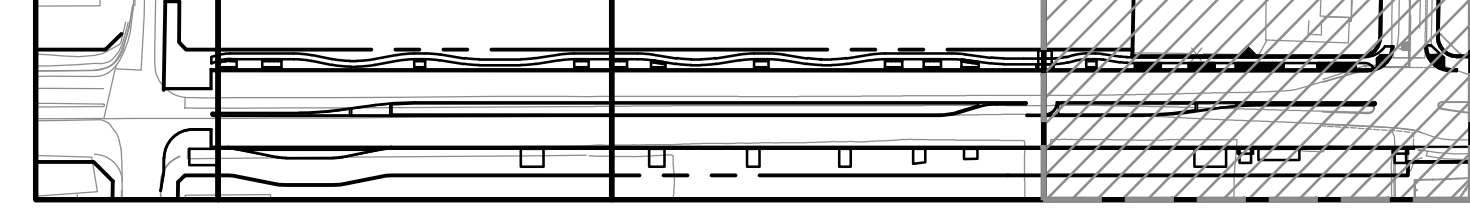
MATCH LINE 92+50.00
SEE DRAWING NO. DM-3

ITEMS OF WORK:

- | | |
|--|--|
| ① RELOCATE (E) WOOD POLE BY OTHERS
SEE UTILITY PLANS | ⑩ PROTECT IN PLACE (E) MEDIAN CURB |
| ② PROTECT IN PLACE (E) WOOD POLE (SEE NOTE 13) | ⑪ RELOCATE WATER VALVE, SEE UTILITY PLANS |
| ③ PROTECT IN PLACE (E) SIGN STRUCTURE | ⑫ PROTECT IN PLACE WATER LINE |
| ④ PROTECT IN PLACE (E) FIRE HYDRANT | ⑬ REMOVE (E) BOLLARDS,
COORDINATE WITH PROPERTY OWNER |
| ⑤ PROTECT IN PLACE (E) WATER VALVE (SEE NOTE 11) | ⑭ PROTECT IN PLACE (E) DRAINAGE INLET |
| ⑥ ADJUST TO GRADE (E) SDMH,
SEE GRADING AND DRAINAGE PLAN (SEE NOTE 11) | ⑮ RELOCATE MAIL BOX, COORDINATE WITH PROPERTY OWNER |
| ⑦ ADJUST TO GRADE (E) WATER VALVE (SEE NOTE 11) | ⑯ RELOCATE SIGN STRUCTURE OUTSIDE LIMIT OF WORK,
COORDINATE WITH PROPERTY OWNER |
| ⑧ MODIFY (E) DRAINAGE INLET,
SEE GRADING AND DRAINAGE PLAN | ⑰ REMOVE (E) WOOD POLE BY OTHERS
SEE UTILITY PLANS |
| ⑨ REMOVE (E) SIGN STRUCTURE | |

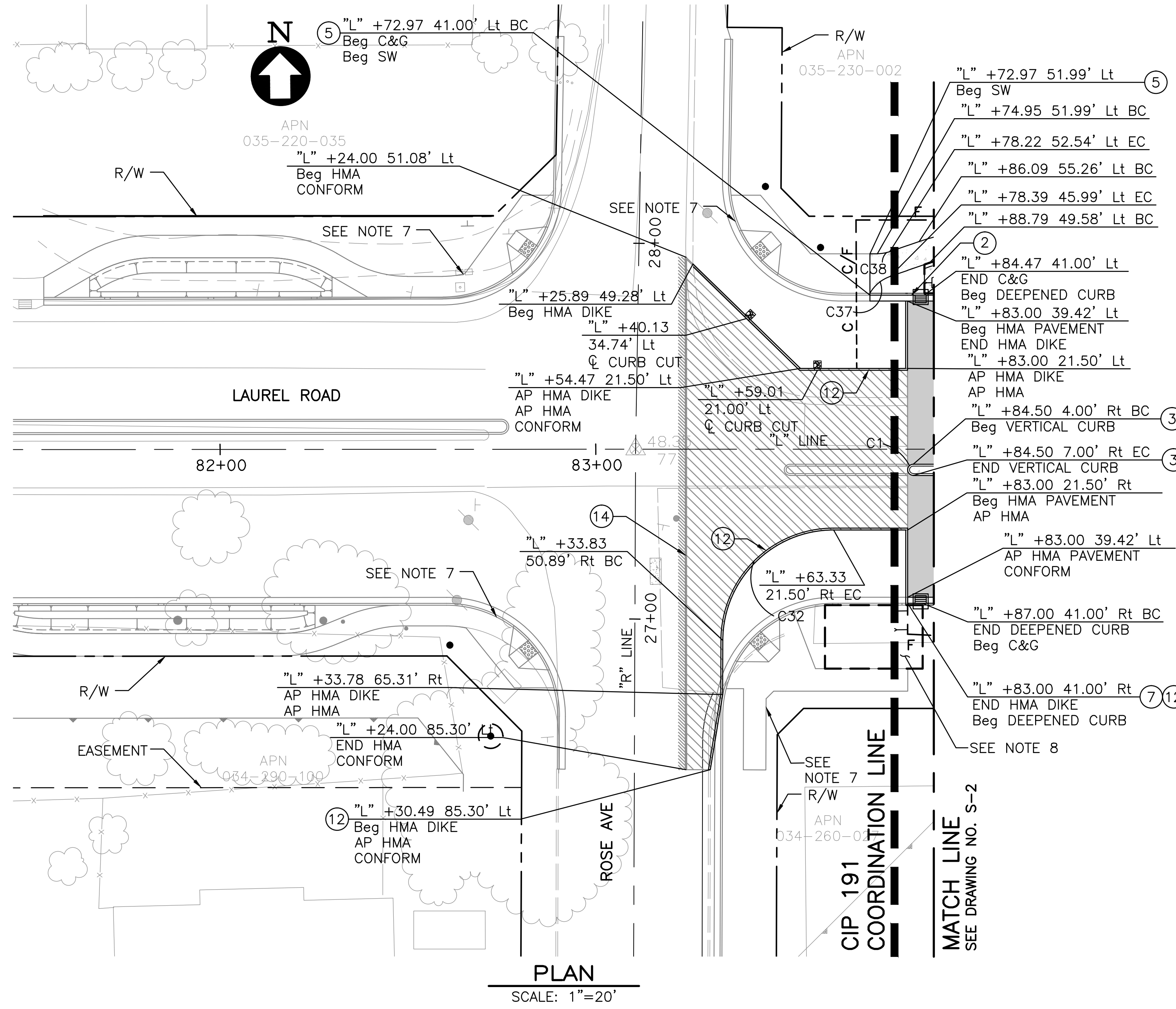


KEY MAP



CURVE DATA

No. #	R	Δ	T	L
C1	1.50'	180°00'00"	-	4.71'
C32	30.00'	89°46'47"	29.88'	47.01'
C37	10.00'	41°15'29"	3.76'	7.20'
C38	10.00'	19°03'21"	1.68'	3.33'



PLAN
SCALE: 1"=20'

NOTES:

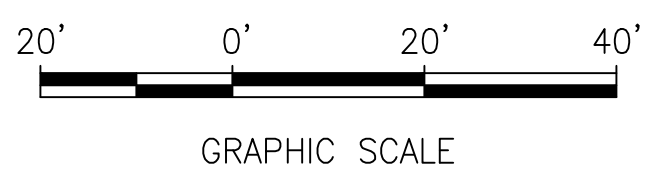
- FOR SIGN AND STRIPING INFORMATION, SEE SIGNING AND STRIPING PLAN.
- FOR GRADING, SEE GRADING AND DRAINAGE PLAN.
- CONTRACTOR SHALL BE RESPONSIBLE FOR THE PROTECTION OF ANY BENCHMARK OR MONUMENTATION. IF A BENCHMARK OR MONUMENTATION IS DISTURBED, THE CONTRACTOR SHALL HAVE A LICENSED LAND SURVEYOR RESTORE THE BENCHMARK OR MONUMENTATION AT THE CONTRACTOR'S EXPENSE.
- MAINTAIN MAXIMUM 2% CROSS SLOPE IN PEDESTRIAN TRAVELED WAYS AND 1.5% CROSS SLOPE BEHIND AND IN FRONT OF ALL CURB RAMPS.
- IF GRASS OR LANDSCAPING IS DISTURBED BY ADJACENT WORK IT SHALL BE RESTORED WITH LIKE KIND UPON COMPLETION OF WORK.
- CONTRACTOR SHALL BE RESPONSIBLE FOR VERIFYING EXISTING CONDITIONS PRIOR TO CONSTRUCTION. IF THERE ARE ANY CONFLICTS WITH PLANS THE CITY ENGINEER SHALL BE NOTIFIED IMMEDIATELY.
- COORDINATION LINE AND CIP 191 IMPROVEMENTS SHOWN FOR REFERENCE ONLY. CONTRACTOR SHALL COORDINATE WITH WORK DONE BY OTHERS AT THE INTERSECTION OF LAUREL ROAD/ROSE AVENUE FOR CIP 191. CONTRACTOR IS RESPONSIBLE FOR ALL WORK SHOWN ON THESE PLANS.
- CONTRACTOR SHALL CONSTRUCT DEEPENED CURB FOR BIORETENTION AREA TO BE CONSTRUCTED BY OTHERS. COORDINATE WITH CITY.
- CALLOUTS FOR HMA DIKE ARE TO BACK OF DIKE. CONTRACTOR TO PLACE HMA DIKE COMPLETELY UPON 12" HMA SECTION.

LEGEND:

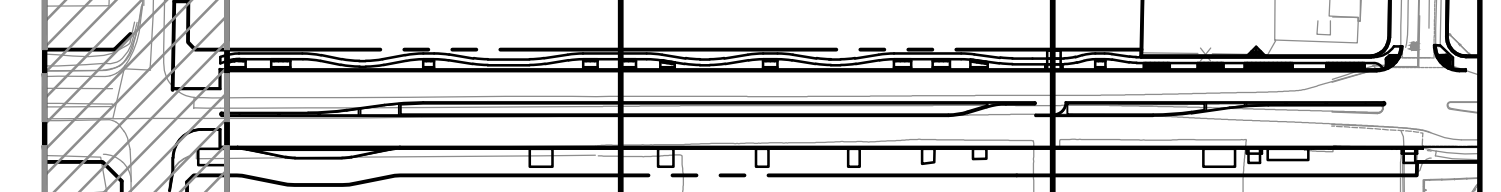
- PCC SIDEWALK, SEE LANDSCAPING PLANS FOR COLOR AND FINISH
- PCC DRIVEWAY (HIGH EARLY STRENGTH)
- 6" CL2 AB
- 2" RHMA-G PVMT, 6" HMA (TYPE A) OVER 14.5" CL2 AB
- 2" RHMA-G OVERLAY
- 2" RHMA-G PVMT, 12.5" FULL DEPTH HMA (TYPE A)
- REINFORCED CONCRETE BUS PAD
- BIORETENTION AREA
- 12" HMA (TYPE A) (REVOCABLE)
- CURB AND GUTTER
- MEDIAN CURB OR AC DIKE
- CONFORM GRIND (REVOCABLE)
- CONFORM GRIND
- CUT / FILL LINE
- PROPOSED STORM DRAIN INLET
- TOP OF CUT
- TOE OF CUT
- RETAINING CURB
- VALLEY GUTTER

ITEMS OF WORK:

- ① CURB RAMP (CALTRANS CASE A), SEE DETAIL CD-1
- ② CITY STANDARD CURB & GUTTER, SEE DETAIL CD-1
- ③ 8" CONCRETE VERTICAL CURB, SEE DETAIL CD-1
- ④ CITY STANDARD DRIVEWAY, SEE DETAIL CD-1
- ⑤ CITY STANDARD SIDEWALK, SEE DETAIL CD-1
- ⑥ RETAINING CURB, SEE DETAIL CD-4
- ⑦ DEEPENED CURB, SEE DETAIL CD-5
- ⑧ CITY STANDARD CONCRETE VALLEY GUTTER, SEE DETAIL CD-2
- ⑨ REINFORCED CONCRETE BUS PAD, SEE DETAIL CD-6
- ⑩ PCC MAINTENANCE BAND, SEE DETAIL CD-6
- ⑪ 15' KEY CONFORM GRIND, SEE DETAIL CD-1
- ⑫ HMA DIKE TYPE A, SEE DETAIL CD-4
- ⑬ INSTALL RELOCATED MAILBOX, EXACT LOCATION TO BE DETERMINED IN THE FIELD BY THE ENGINEER, SEE DETAIL CD-7
- ⑭ 5' KEY CONFORM GRIND, SEE DETAIL CD-1



KEY MAP



4670 WILLOW RD
SUITE 250
PLEASANTON, CA 94568
925-396-7700
925-396-7799 (FAX)

OAKLEY
CALIFORNIA

CIP 196 - LAUREL ROAD WIDENING PROJECT
FROM ROSE AVENUE TO MELLOWOOD DRIVE
SITE PLAN
OAKLEY CONTRA COSTA COUNTY CALIFORNIA

Date: 10/19/2017	Revisions
Scale: AS NOTED	20181019 ADDENDUM No. 1
Design: CC	
Drawn: AH	
Approved: MC	
Job No: 2017095-10	
Drawing Number:	S-1
	11 OF 58

CURVE DATA

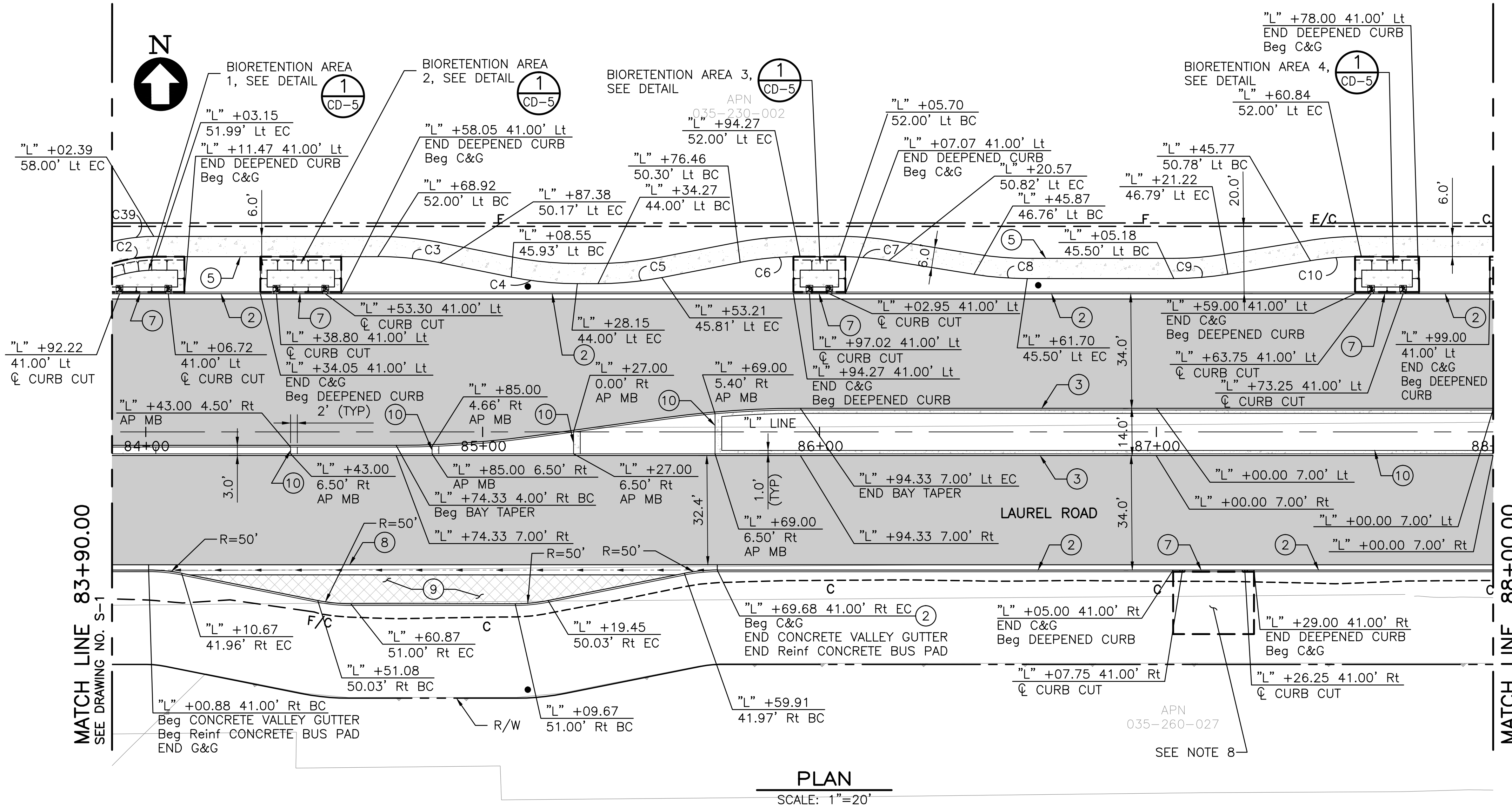
No. #	R	Δ	T	L
C2	44.00'	19°03'21"	7.39'	14.63'
C3	94.00'	11°18'02"	9.30'	18.54'
C4	100.00'	11°18'02"	9.89'	19.72'
C5	100.00'	10°55'16"	9.56'	19.06'
C6	94.00'	10°55'16"	8.99'	17.92'
C7	94.00'	9°06'20"	7.49'	14.94'
C8	100.00'	9°06'20"	7.96'	15.89'
C9	100.00'	9°13'48"	8.07'	16.11'
C10	94.00'	9°13'48"	7.59'	15.14'
C39	50.00'	19°03'21"	8.39'	16.63'

NOTES:

- FOR SIGN AND STRIPING INFORMATION, SEE SIGNING AND STRIPING PLAN.
- FOR GRADING, SEE GRADING AND DRAINAGE PLAN.
- CONTRACTOR SHALL BE RESPONSIBLE FOR THE PROTECTION OF ANY BENCHMARK OR MONUMENTATION. IF A BENCHMARK OR MONUMENTATION IS DISTURBED, THE CONTRACTOR SHALL HAVE A LICENSED LAND SURVEYOR RESTORE THE BENCHMARK OR MONUMENTATION AT THE CONTRACTOR'S EXPENSE.
- MAINTAIN MAXIMUM 2% CROSS SLOPE IN PEDESTRIAN TRAVELED WAYS AND 1.5% CROSS SLOPE BEHIND AND IN FRONT OF ALL CURB RAMPS.
- IF GRASS OR LANDSCAPING IS DISTURBED BY ADJACENT WORK IT SHALL BE RESTORED WITH LIKE KIND UPON COMPLETION OF WORK.
- CONTRACTOR SHALL BE RESPONSIBLE FOR VERIFYING EXISTING CONDITIONS PRIOR TO CONSTRUCTION. IF THERE ARE ANY CONFLICTS WITH PLANS THE CITY ENGINEER SHALL BE NOTIFIED IMMEDIATELY.
- COORDINATION LINE AND CIP 191 IMPROVEMENTS SHOWN FOR REFERENCE ONLY. CONTRACTOR SHALL COORDINATE WITH WORK DONE BY OTHERS AT THE INTERSECTION OF LAUREL ROAD/ROSE AVENUE FOR CIP 191. CONTRACTOR IS RESPONSIBLE FOR ALL WORK SHOWN ON THESE PLANS.
- CONTRACTOR SHALL CONSTRUCT DEEPENED CURB FOR BIORETENTION AREA TO BE CONSTRUCTED BY OTHERS. COORDINATE WITH CITY.
- CALLOUTS FOR HMA DIKE ARE TO BACK OF DIKE. CONTRACTOR TO PLACE HMA DIKE COMPLETELY UPON 12" HMA SECTION.

LEGEND:

- PCC SIDEWALK, SEE LANDSCAPING PLANS FOR COLOR AND FINISH
- PCC DRIVEWAY (HIGH EARLY STRENGTH)
- 6" CL2 AB
- 2" RHMA-G PVMT, 6" HMA (TYPE A) OVER 14.5" CL2 AB
- 2" RHMA-G OVERLAY
- 2" RHMA-G PVMT, 12.5" FULL DEPTH HMA (TYPE A)
- REINFORCED CONCRETE BUS PAD
- BIORETENTION AREA
- 12" HMA (TYPE A) (REVOCABLE)
- CURB AND GUTTER
- MEDIAN CURB OR AC DIKE
- CONFORM GRIND (REVOCABLE)
- CONFORM GRIND
- CUT / FILL LINE
- PROPOSED STORM DRAIN INLET
- TOP OF CUT
- TOE OF CUT
- RETAINING CURB
- VALLEY GUTTER

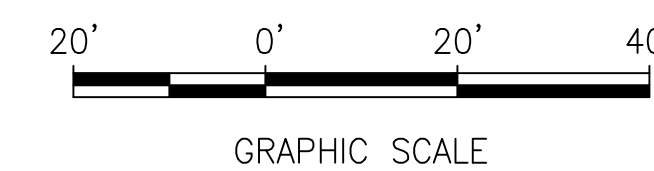


PLAN

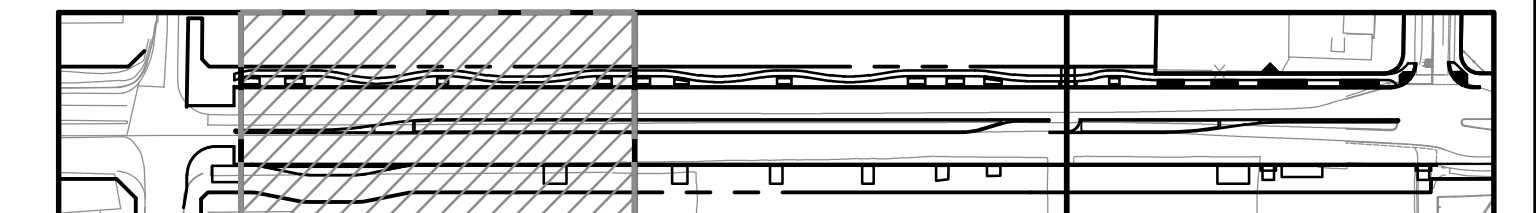
SCALE: 1"=20'

ITEMS OF WORK:

- ① CURB RAMP (CALTRANS CASE A), SEE DETAIL CD-1
- ② CITY STANDARD CURB & GUTTER, SEE DETAIL CD-1
- ③ 8" CONCRETE VERTICAL CURB, SEE DETAIL CD-1
- ④ CITY STANDARD DRIVEWAY, SEE DETAIL CD-1
- ⑤ CITY STANDARD SIDEWALK, SEE DETAIL CD-1
- ⑥ RETAINING CURB, SEE DETAIL CD-4
- ⑦ DEEPENED CURB, SEE DETAIL CD-5
- ⑧ CITY STANDARD CONCRETE VALLEY GUTTER, SEE DETAIL CD-2
- ⑨ REINFORCED CONCRETE BUS PAD, SEE DETAIL CD-6
- ⑩ PCC MAINTENANCE BAND, SEE DETAIL CD-6
- ⑪ 15' KEY CONFORM GRIND, SEE DETAIL CD-1
- ⑫ HMA DIKE TYPE A, SEE DETAIL CD-4
- ⑬ INSTALL RELOCATED MAILBOX, EXACT LOCATION TO BE DETERMINED IN THE FIELD BY THE ENGINEER, SEE DETAIL CD-7
- ⑭ 5' KEY CONFORM GRIND, SEE DETAIL CD-1



KEY MAP



CURVE DATA

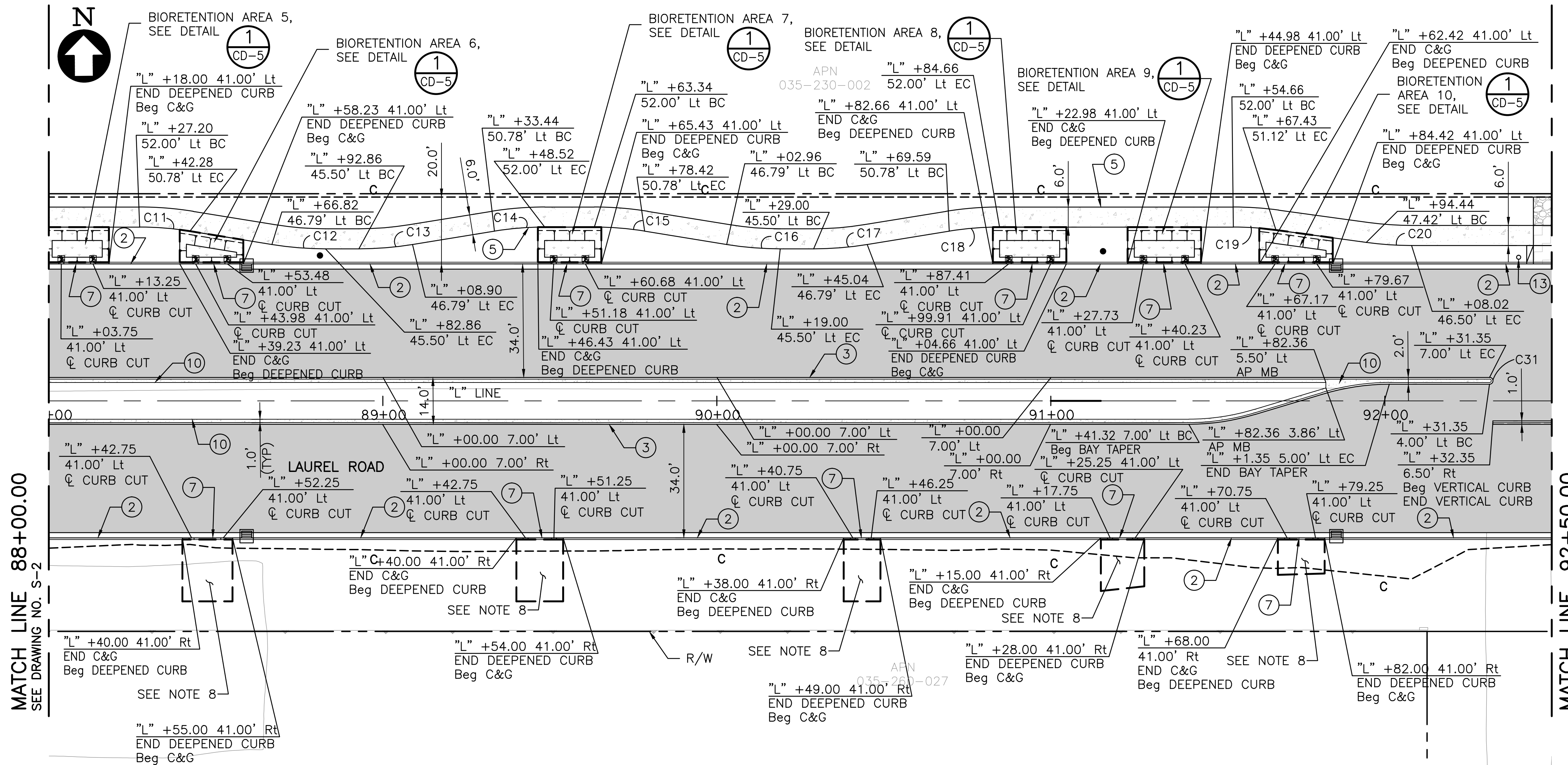
No. #	R	Δ	T	L
C11	94.00'	9°13'48"	7.59'	15.14'
C12	100.00'	9°13'48"	8.07'	16.11'
C13	100.00'	9°13'48"	8.07'	16.11'
C14	94.00'	9°13'48"	7.59'	15.14'
C15	94.00'	9°13'48"	7.59'	15.14'
C16	100.00'	9°13'48"	8.07'	16.11'
C17	100.00'	9°13'48"	8.07'	16.11'
C18	94.00'	9°13'48"	7.59'	15.14'
C19	94.00'	7°48'18"	6.41'	12.80'
C20	100.00'	7°48'18"	6.82'	13.62'
C31	1.00'	180°00'00"	-	3.14'

NOTES:

- FOR SIGN AND STRIPING INFORMATION, SEE SIGNING AND STRIPING PLAN.
- FOR GRADING, SEE GRADING AND DRAINAGE PLAN.
- CONTRACTOR SHALL BE RESPONSIBLE FOR THE PROTECTION OF ANY BENCHMARK OR MONUMENTATION. IF A BENCHMARK OR MONUMENTATION IS DISTURBED, THE CONTRACTOR SHALL HAVE A LICENSED LAND SURVEYOR RESTORE THE BENCHMARK OR MONUMENTATION AT THE CONTRACTOR'S EXPENSE.
- MAINTAIN MAXIMUM 2% CROSS SLOPE IN PEDESTRIAN TRAVELED WAYS AND 1.5% CROSS SLOPE BEHIND AND IN FRONT OF ALL CURB RAMPS.
- IF GRASS OR LANDSCAPING IS DISTURBED BY ADJACENT WORK IT SHALL BE RESTORED WITH LIKE KIND UPON COMPLETION OF WORK.
- CONTRACTOR SHALL BE RESPONSIBLE FOR VERIFYING EXISTING CONDITIONS PRIOR TO CONSTRUCTION. IF THERE ARE ANY CONFLICTS WITH PLANS THE CITY ENGINEER SHALL BE NOTIFIED IMMEDIATELY.
- COORDINATION LINE AND CIP 191 IMPROVEMENTS SHOWN FOR REFERENCE ONLY. CONTRACTOR SHALL COORDINATE WITH WORK DONE BY OTHERS AT THE INTERSECTION OF LAUREL ROAD/ROSE AVENUE FOR CIP 191. CONTRACTOR IS RESPONSIBLE FOR ALL WORK SHOWN ON THESE PLANS.
- CONTRACTOR SHALL CONSTRUCT DEEPENED CURB FOR BIORETENTION AREA TO BE CONSTRUCTED BY OTHERS. COORDINATE WITH CITY.
- CALLOUTS FOR HMA DIKE ARE TO BACK OF DIKE. CONTRACTOR TO PLACE HMA DIKE COMPLETELY UPON 12" HMA SECTION.

LEGEND:

- PCC SIDEWALK, SEE LANDSCAPING PLANS FOR COLOR AND FINISH
- PCC DRIVEWAY (HIGH EARLY STRENGTH)
- 6" CL2 AB
- 2" RHMA-G PVMT, 6" HMA (TYPE A) OVER 14.5" CL2 AB
- 2" RHMA-G OVERLAY
- 2" RHMA-G PVMT, 12.5" FULL DEPTH HMA (TYPE A)
- REINFORCED CONCRETE BUS PAD
- BIORETENTION AREA
- 12" HMA (TYPE A) (REVOCABLE)
- CURB AND GUTTER
- MEDIAN CURB OR AC DIKE
- CONFORM GRIND (REVOCABLE)
- CONFORM GRIND
- C/F --- CUT / FILL LINE
- PROPOSED STORM DRAIN INLET
- TOP OF CUT
- TOE OF CUT
- RETAINING CURB
- VALLEY GUTTER

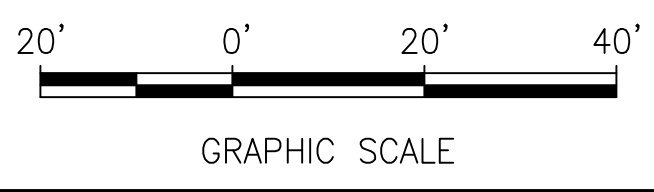


MATCH LINE 88+00.00
SEE DRAWING NO. S-2

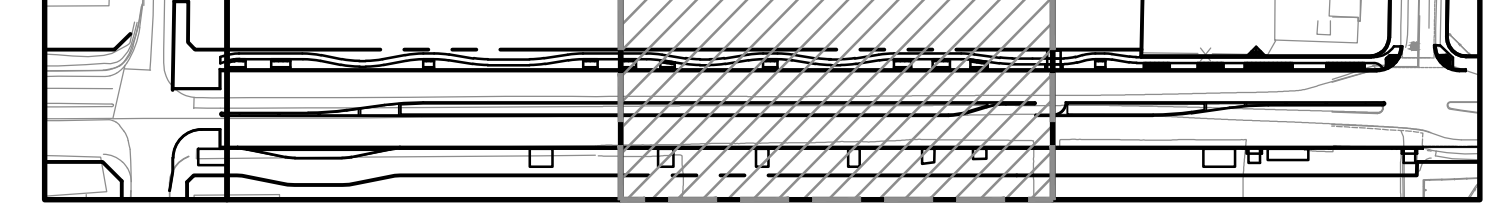
MATCH LINE 92+50.00
SEE DRAWING NO. S-4

PLAN
SCALE: 1"=20'

- ITEMS OF WORK:**
- ① CURB RAMP (CALTRANS CASE A), SEE DETAIL CD-1
 - ② CITY STANDARD CURB & GUTTER, SEE DETAIL CD-1
 - ③ 8" CONCRETE VERTICAL CURB, SEE DETAIL CD-1
 - ④ CITY STANDARD DRIVEWAY, SEE DETAIL CD-1
 - ⑤ CITY STANDARD SIDEWALK, SEE DETAIL CD-1
 - ⑥ RETAINING CURB, SEE DETAIL CD-4
 - ⑦ DEEPENED CURB, SEE DETAIL CD-5
 - ⑧ CITY STANDARD CONCRETE VALLEY GUTTER, SEE DETAIL CD-2
 - ⑨ REINFORCED CONCRETE BUS PAD, SEE DETAIL CD-6
 - ⑩ PCC MAINTENANCE BAND, SEE DETAIL CD-6
 - ⑪ 15' KEY CONFORM GRIND, SEE DETAIL CD-1
 - ⑫ HMA DIKE TYPE A, SEE DETAIL SEE NOTE 9 (REVOCABLE) CD-4
 - ⑬ INSTALL RELOCATED MAILBOX, EXACT LOCATION TO BE DETERMINED IN THE FIELD BY THE ENGINEER, SEE DETAIL CD-7
 - ⑭ 5' KEY CONFORM GRIND, SEE DETAIL CD-1



KEY MAP



CURVE DATA

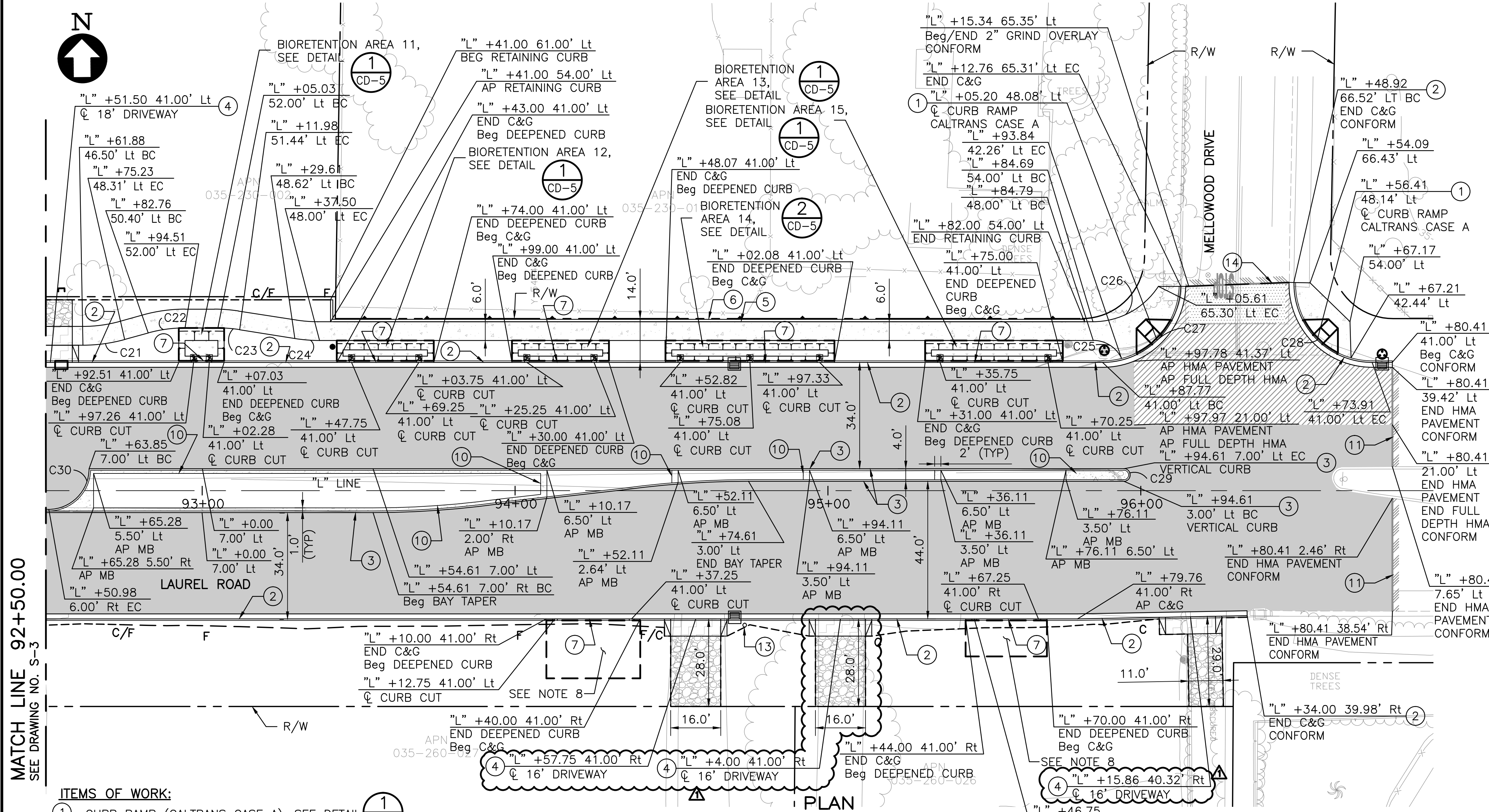
No. #	R	Δ	T	L
C21	50.00'	15°29'14"	6.80'	13.52'
C22	44.00'	15°29'14"	5.98'	11.89'
C23	44.00'	9°05'25"	3.50'	6.98'
C24	50.00'	9°05'25"	3.97'	7.93'
C25	10.00'	64°45'41"	6.34'	11.30'
C26	25.00'	56°47'40"	13.52'	24.78'
C27	25.00'	88°25'05"	24.32'	38.58'
C28	25.00'	91°11'44"	25.53'	39.79'
C29	2.00'	180°00'00"	-	6.28'
C30	13.00'	90°00'00"	13.00'	20.42'

NOTES:

- FOR SIGN AND STRIPING INFORMATION, SEE SIGNING AND STRIPING PLAN.
- FOR GRADING, SEE GRADING AND DRAINAGE PLAN.
- CONTRACTOR SHALL BE RESPONSIBLE FOR THE PROTECTION OF ANY BENCHMARK OR MONUMENTATION. IF A BENCHMARK OR MONUMENTATION IS DISTURBED, THE CONTRACTOR SHALL HAVE A LICENSED LAND SURVEYOR RESTORE THE BENCHMARK OR MONUMENTATION AT THE CONTRACTOR'S EXPENSE.
- MAINTAIN MAXIMUM 2% CROSS SLOPE IN PEDESTRIAN TRAVELED WAYS AND 1.5% CROSS SLOPE BEHIND AND IN FRONT OF ALL CURB RAMP.
- IF GRASS OR LANDSCAPING IS DISTURBED BY ADJACENT WORK IT SHALL BE RESTORED WITH LIKE KIND UPON COMPLETION OF WORK.
- CONTRACTOR SHALL BE RESPONSIBLE FOR VERIFYING EXISTING CONDITIONS PRIOR TO CONSTRUCTION. IF THERE ARE ANY CONFLICTS WITH PLANS THE CITY ENGINEER SHALL BE NOTIFIED IMMEDIATELY.
- COORDINATION LINE AND CIP 191 IMPROVEMENTS SHOWN FOR REFERENCE ONLY. CONTRACTOR SHALL COORDINATE WITH WORK DONE BY OTHERS AT THE INTERSECTION OF LAUREL ROAD/ROSE AVENUE FOR CIP 191. CONTRACTOR IS RESPONSIBLE FOR ALL WORK SHOWN ON THESE PLANS.
- CONTRACTOR SHALL CONSTRUCT DEEPENED CURB FOR BIORETENTION AREA TO BE CONSTRUCTED BY OTHERS. COORDINATE WITH CITY.
- CALLOUTS FOR HMA DIKE ARE TO BACK OF DIKE. CONTRACTOR TO PLACE HMA DIKE COMPLETELY UPON 12" HMA SECTION.

LEGEND:

- PCC SIDEWALK, SEE LANDSCAPING PLANS FOR COLOR AND FINISH
- PCC DRIVEWAY (HIGH EARLY STRENGTH)
- 6" CL2 AB
- 2" RHMA-G PVMT, 6" HMA (TYPE A) OVER 14.5" CL2 AB
- 2" RHMA-G OVERLAY
- 2" RHMA-G PVMT, 12.5" FULL DEPTH HMA (TYPE A)
- REINFORCED CONCRETE BUS PAD
- BIORETENTION AREA
- 12" HMA (TYPE A) (REVOCABLE)
- CURB AND GUTTER
- MEDIAN CURB OR AC DIKE
- CONFORM GRIND (REVOCABLE)
- CONFORM GRIND
- CUT / FILL LINE
- PROPOSED STORM DRAIN INLET
- TOP OF CUT
- TOE OF CUT
- RETAINING CURB
- VALLEY GUTTER

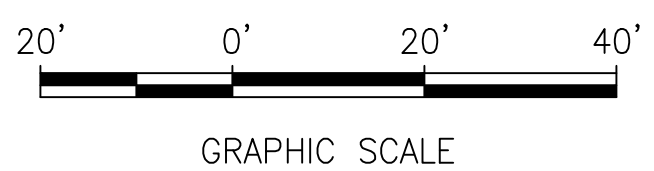


MATCH LINE 92+50.00
SEE DRAWING NO. S-3

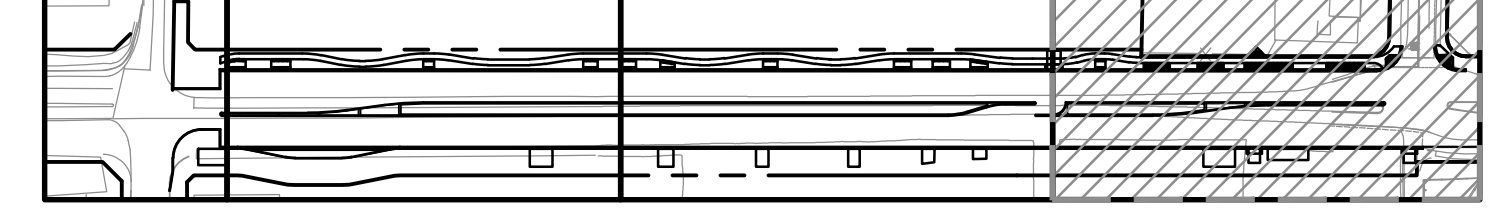
ITEMS OF WORK:

- ① CURB RAMP (CALTRANS CASE A), SEE DETAIL CD-1
- ② CITY STANDARD CURB & GUTTER, SEE DETAIL CD-1
- ③ 8" CONCRETE VERTICAL CURB, SEE DETAIL CD-1
- ④ CITY STANDARD DRIVEWAY, SEE DETAIL CD-1
- ⑤ CITY STANDARD SIDEWALK, SEE DETAIL CD-1
- ⑥ RETAINING CURB, SEE DETAIL CD-4
- ⑦ DEEPENED CURB, SEE DETAIL CD-5
- ⑧ CITY STANDARD CONCRETE VALLEY GUTTER, SEE DETAIL CD-2
- ⑨ REINFORCED CONCRETE BUS PAD, SEE DETAIL CD-6
- ⑩ PCC MAINTENANCE BAND, SEE DETAIL CD-6
- ⑪ 15' KEY CONFORM GRIND, SEE DETAIL CD-1
- ⑫ HMA DIKE TYPE A, SEE DETAIL CD-4
- ⑬ INSTALL RELOCATED MAILBOX, EXACT LOCATION TO BE DETERMINED IN THE FIELD BY THE ENGINEER, SEE DETAIL CD-7
- ⑭ 5' KEY CONFORM GRIND, SEE DETAIL CD-1

SCALE: 1"=20'



KEY MAP

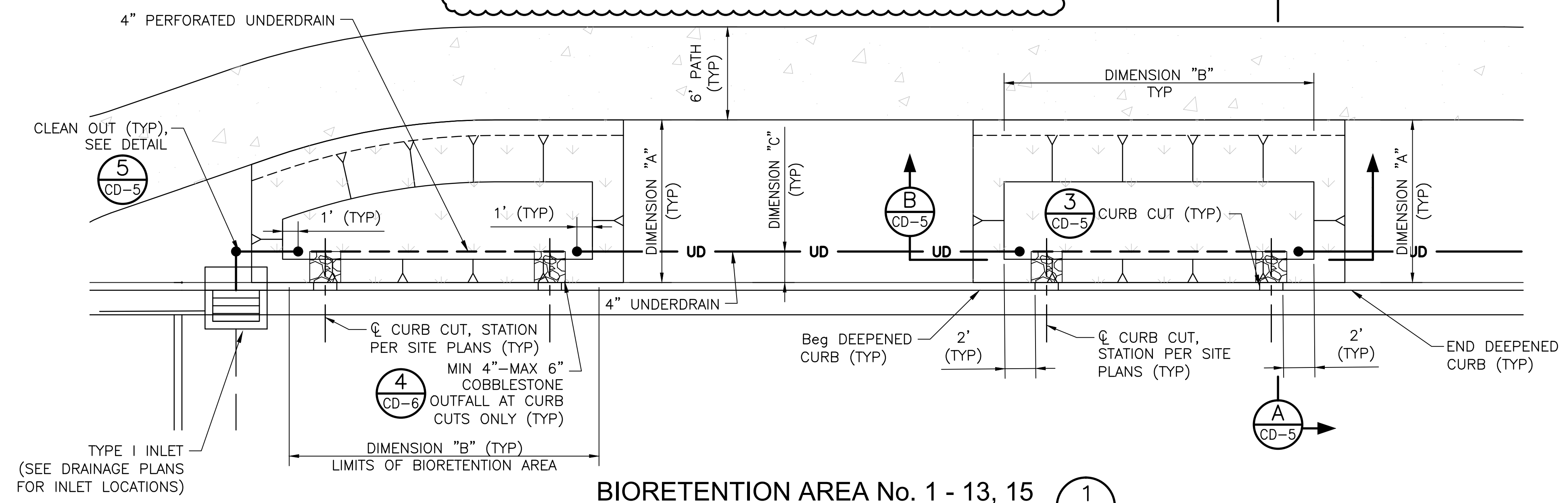


NOTES:

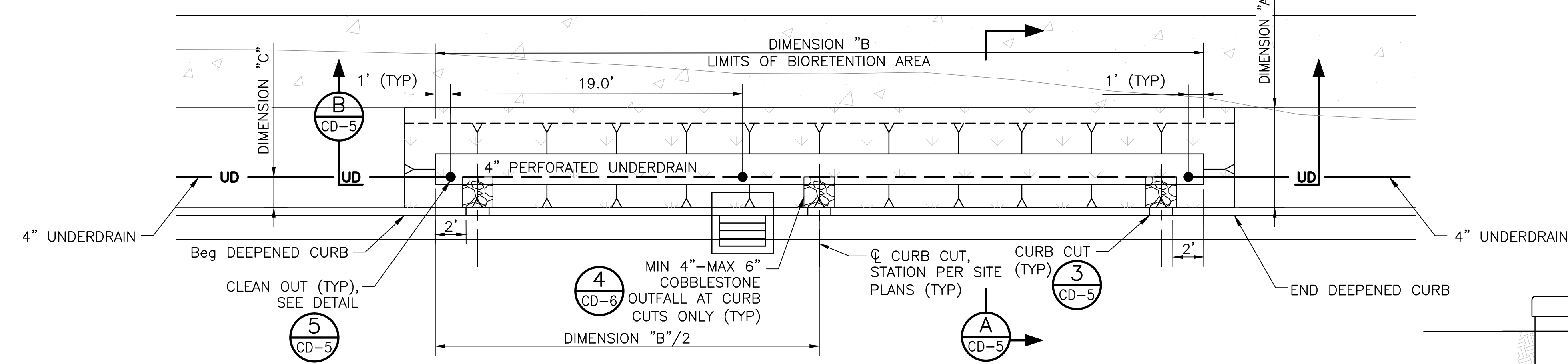
- 4" PERFORATED PIPE SHALL BE PLACED AT THE TOP OF THE CLASS 2 PERMEABLE LAYER, WITH HOLES FACING DOWN. CONNECT 4" PERFORATED PIPE TO 4" UNDERDRAIN. CONNECT 4" UNDERDRAIN TO INLET. SEE GRADING AND DRAINAGE PLAN FOR INVERT ELEVATION.

BIORETENTION AREA SIZE CHART

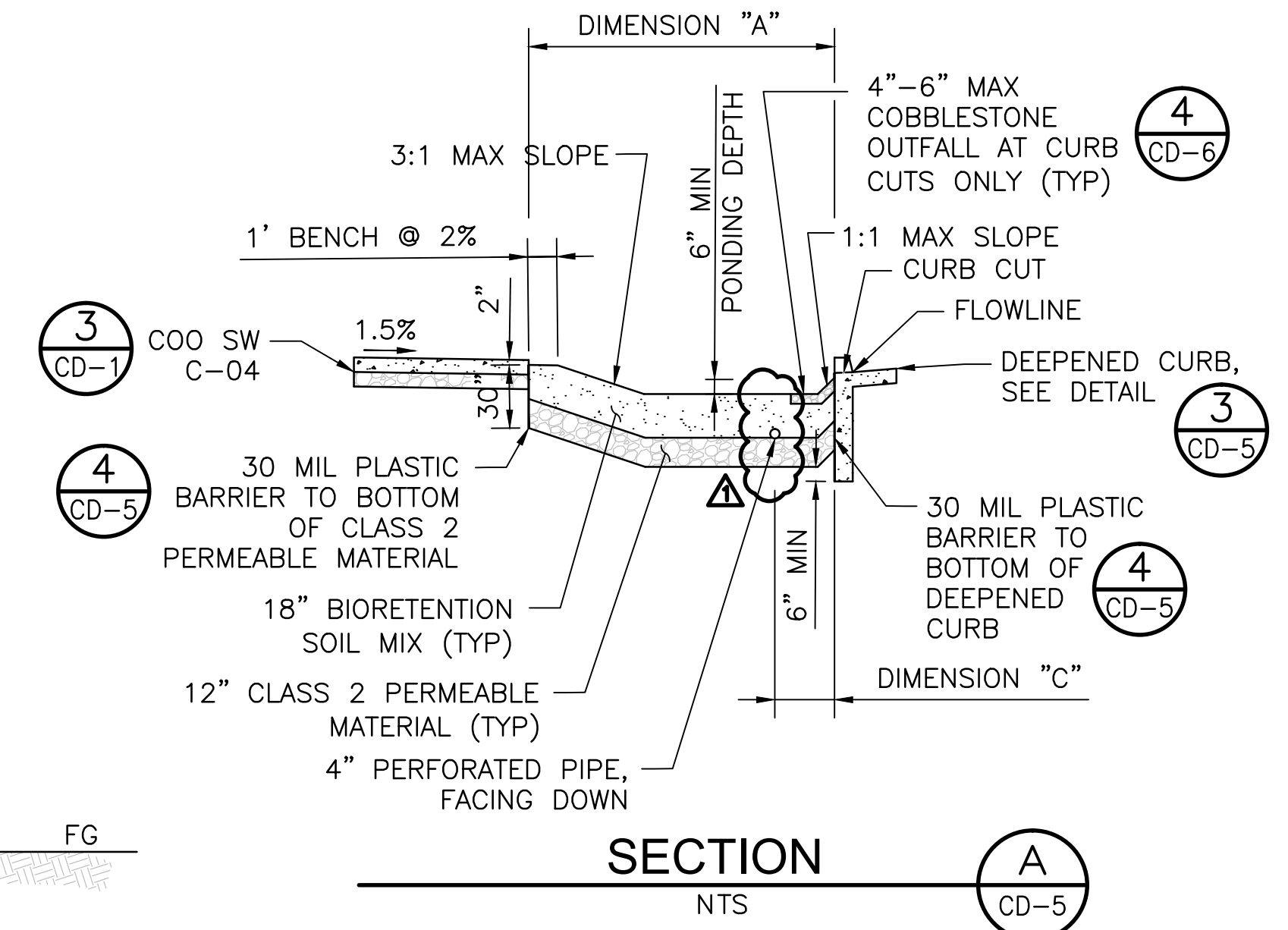
No. #	DIMENSION "A"	DIMENSION "B"	DIMENSION "C"
1	Varies FROM 7.6' TO 10.5'	20.0'	1.5'
2	10.5'	20.0'	1.5'
3	10.5'	11.4'	1.5'
4	10.5'	15.0'	1.5'
5	10.5'	15.0'	1.5'
6	Varies FROM 6.7' TO 9.7'	15.0'	1.5'
7	10.5'	15.0'	1.5'
8	10.5'	18.0'	1.5'
9	10.5'	18.0'	1.5'
10	Varies FROM 7.3' TO 10.2'	18.0'	1.5'
11	10.5'	10.5'	1.5'
12	6.5'	27.0'	1.5'
13	6.5'	27.0'	1.5'
14	6.5'	50.0'	1.5'
15	6.5'	40.0'	1.5'



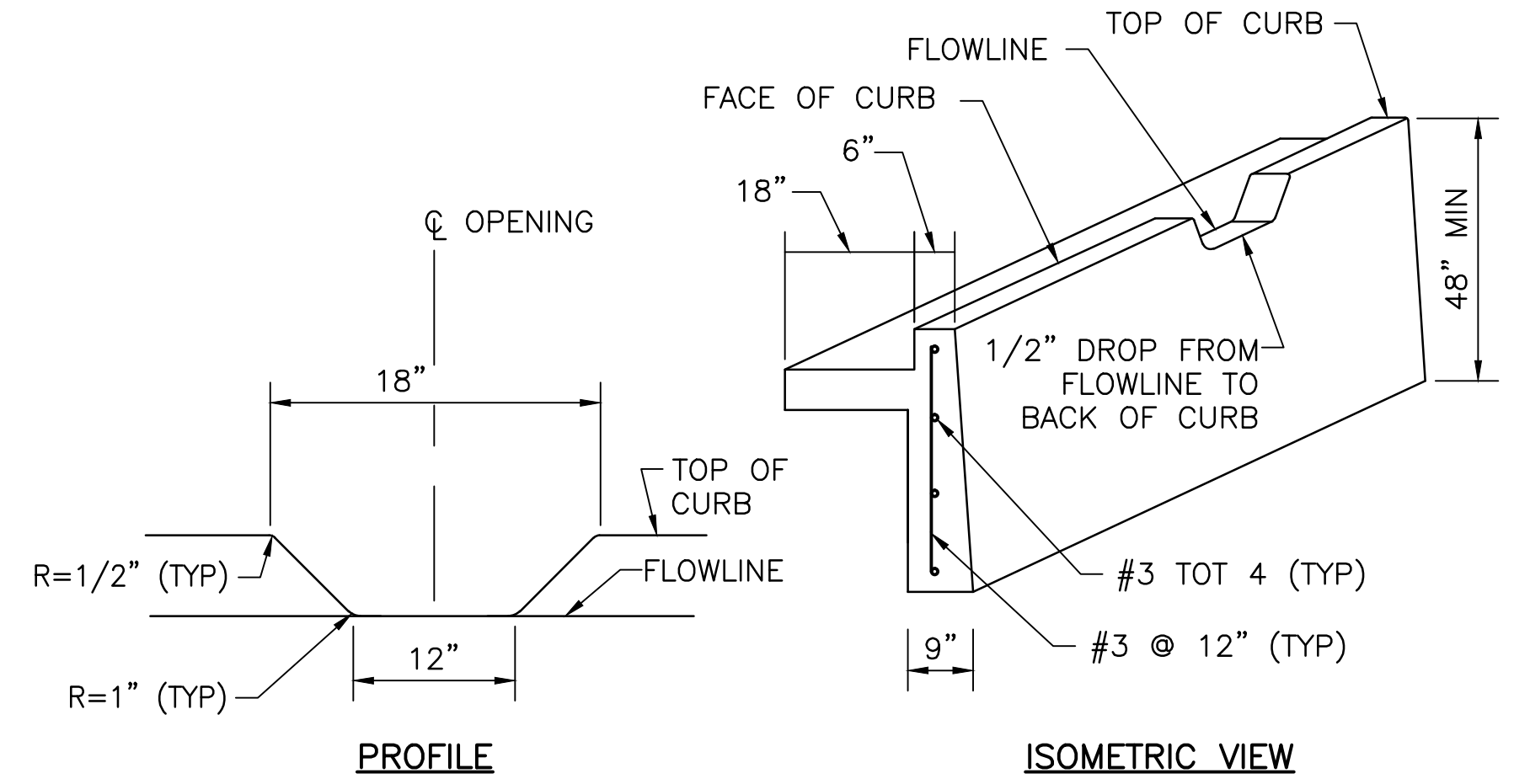
BIORETENTION AREA No. 1 - 13, 15
NTS



BIORETENTION AREA No. 14
NTS

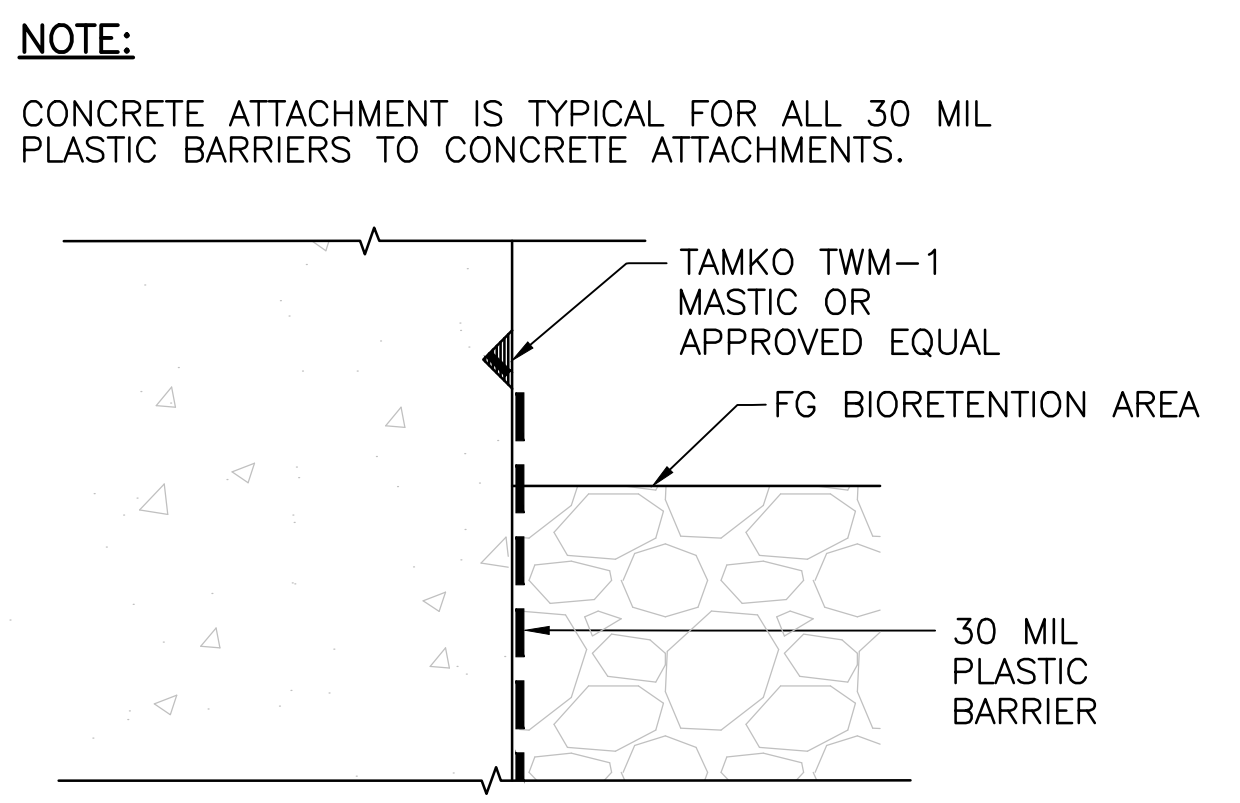


SECTION A
NTS



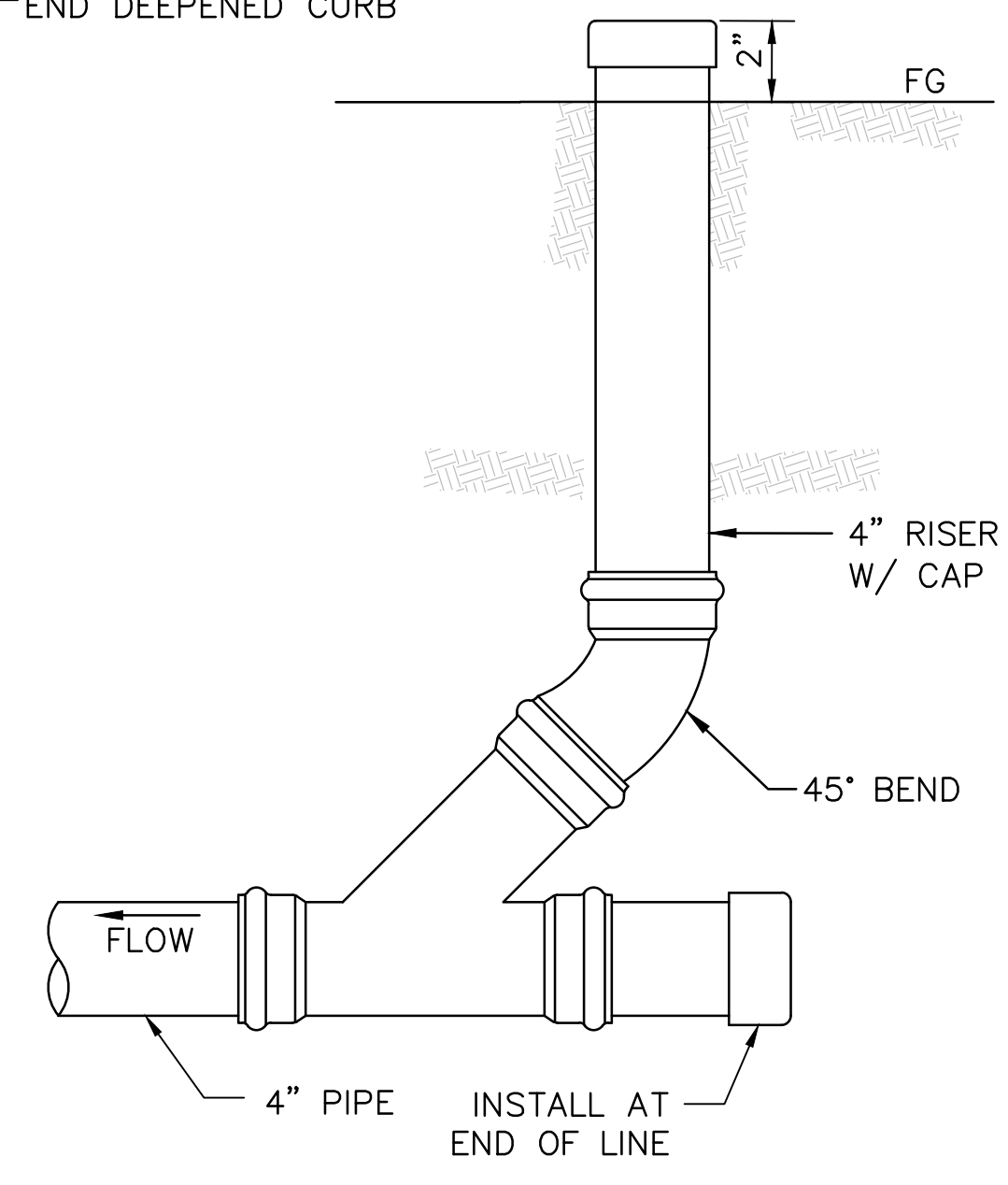
DEEPEMED CURB WITH CURB CUT

DETAIL 3
NTS



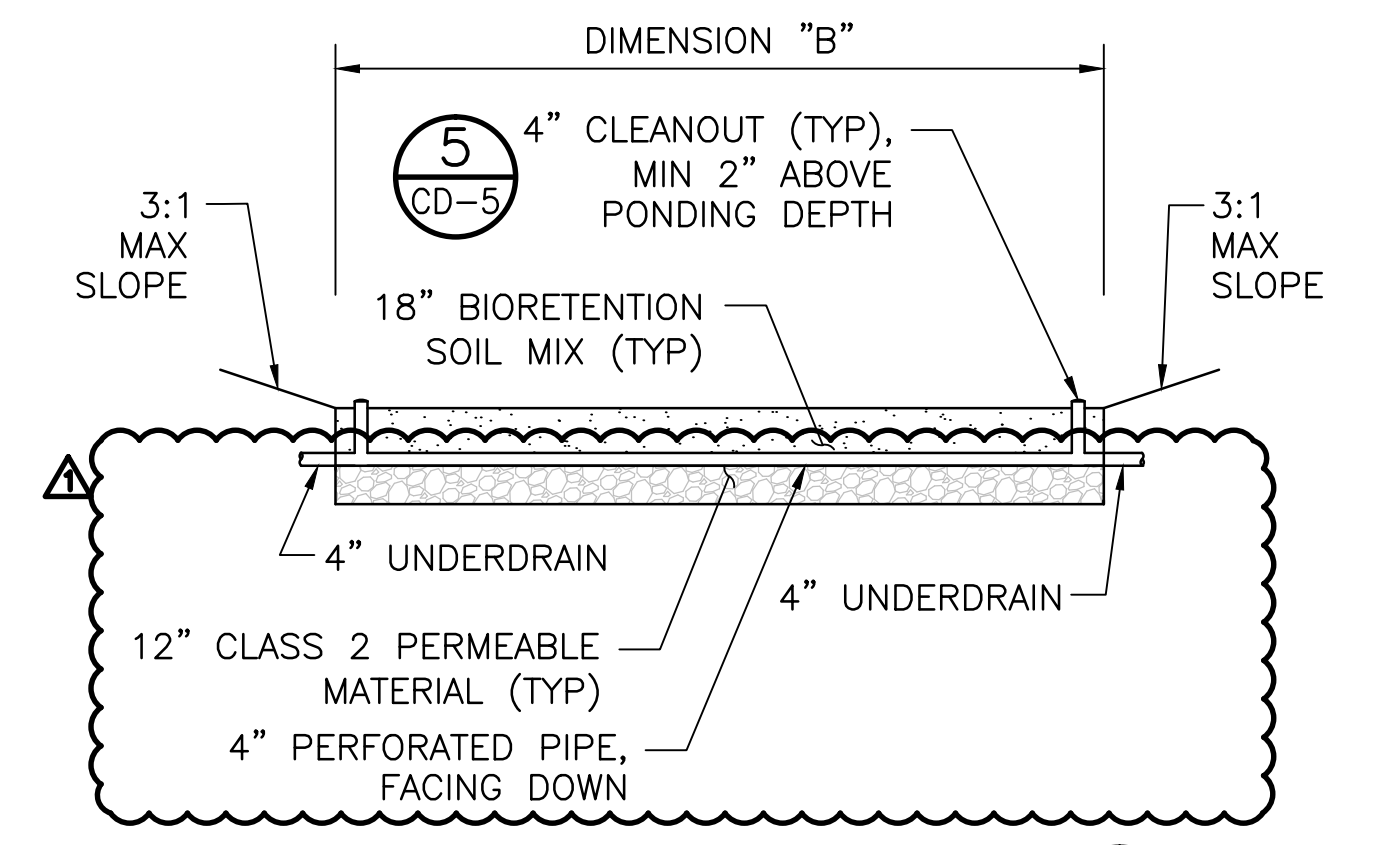
30 MIL PLASTIC BARRIER ANCHORAGE

DETAIL 4
NTS



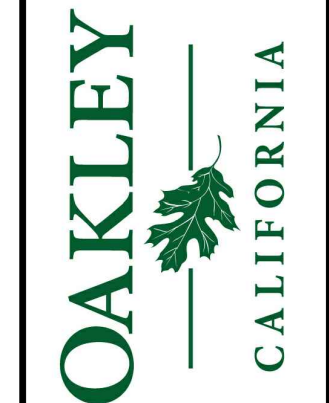
CLEANOUT

DETAIL 5
NTS



SECTION B
NTS

No.	Revisions
A	20181019 ADDENDUM No. 1



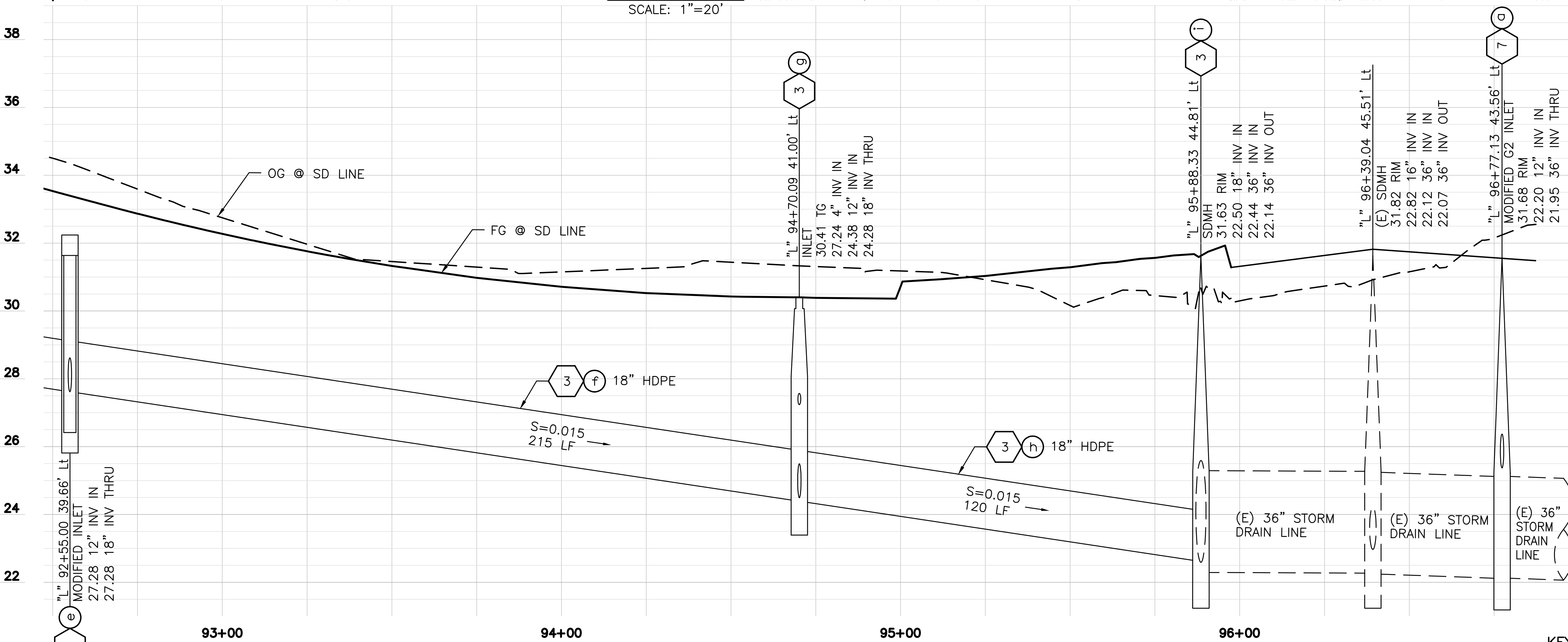
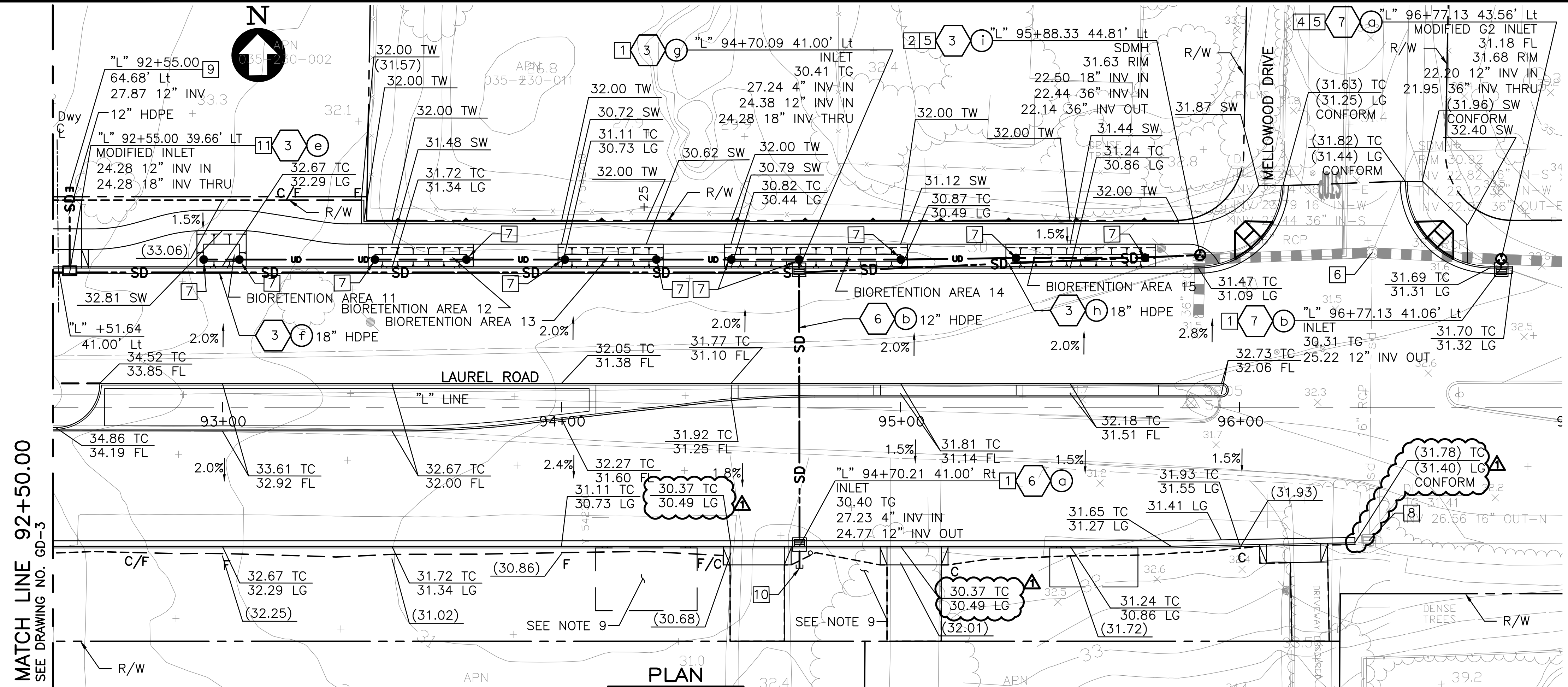
**CIP 196 - LAUREL ROAD WIDENING PROJECT
FROM ROSE AVENUE TO MELLOWOOD DRIVE
GRADING AND DRAINAGE PLAN**
OAKLEY CONTRA COSTA COUNTY CALIFORNIA

Date: 10/19/2017	Revisions
Scale: AS NOTED	20181019 ADDENDUM No. 1
Design: CC	
Drawn: AH	
Approved: MC	
Job No: 2017095-10	
Drawing Number:	
GD-4	
27 OF 58	

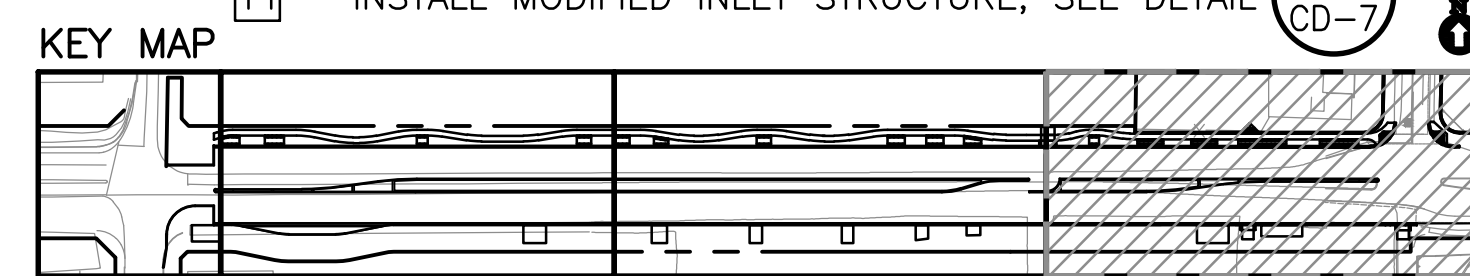
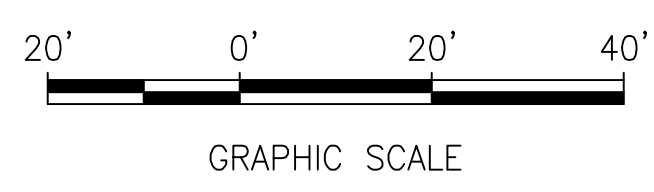
- NOTES:**
- FOR GENERAL NOTES, SEE DRAWING GN-1. FOR ABBREVIATIONS, SEE DRAWING T-1.
 - FOR GEOMETRY OF CONTROL, SEE SITE PLAN.
 - THIS PLAN IS ACCURATE FOR GRADING AND DRAINAGE FACILITIES ONLY.
 - CURB AND GUTTER ELEVATIONS ARE SHOWN AT 50' INTERVALS ALONG "L" LINE, UNLESS NOTED OTHERWISE.
 - ALL EXISTING ABOVE GROUND UTILITY FEATURES SHALL BE ADJUSTED TO GRADE UNLESS OTHERWISE NOTED.
 - TRENCHING SHALL CONFORM TO CONTRA COSTA COUNTY STORM DRAIN TRENCH DETAILS CD01, SEE DETAIL (1) CD-2.
 - STATION AND OFFSET FOR STORM DRAIN INLETS SHALL BE PER DETAIL (4) CD-3.
 - FOR BIORETENTION AREA DETAIL, SEE (1) CD-5 (2) CD-5.
 - CONTRACTOR SHALL CONSTRUCT DEEPENED CURB FOR BIORETENTION AREA TO BE CONSTRUCTED BY OTHERS. COORDINATE WITH CITY.
 - CONTRACTOR SHALL CONFORM TO EXISTING GROUND AT 3:1 MAX ONLY. CONTRACTOR SHALL COORDINATE WITH CONTRACTOR FOR CIP 191. CONTRACTOR IS RESPONSIBLE FOR ALL WORK SHOWN ON THESE PLANS.

- LEGEND:**
- sd - Exist STORM DRAIN LINE (SEE PLAN FOR SIZE)
 - Exist STORM DRAIN INLET
 - Exist STORM DRAIN MANHOLE
 - SD - PROPOSED STORM DRAIN LINE (SEE PLAN FOR SIZE)
 - u - PROPOSED 4" UNDERDRAIN LINE
 - PROPOSED 4" PERFORATED UNDERDRAIN LINE
 - C/F - CUT / FILL LINE
 - PROPOSED STORM DRAIN INLET
 - PROPOSED STORM DRAIN MANHOLE
 - PROPOSED CLEANOUT
 - 1 - DRAINAGE SYSTEM NUMBER
 - 7 - DRAINAGE STRUCTURE DESIGNATION
 - (XX.XX) - Exist ELEVATION
 - XX.XX - PROPOSED ELEVATION

- ITEMS OF WORK**
- INSTALL TYPE 1 CURB INLET AND STORM DRAIN MARKER PER CITY OF OAKLEY STANDARD PLAN SD-08 AND SD-12, SEE DETAILS (4) CD-2 (5) CD-2 (7) CD-2.
 - REMOVE EXIST INLET AND REPLACE WITH SDMH, SEE DETAIL (3) CD-2.
 - CONNECT TO EXISTING INLET AND MODIFY TO FIT NEW PIPE.
 - INSTALL MODIFIED G2 INLET, SEE DETAIL (5) CD-2 (6) CD-7 (7) CD-2.
 - CONNECT TO EXISTING PIPE.
 - ADJUST SDMH TO GRADE, SEE DETAIL (2) CD-2.
 - INSTALL CLEANOUT STRUCTURE (5) CD-5.
 - ADJUST INLET TO GRADE (2) CD-2.
 - STUB OUT AND CAP 12" HDPE.
 - STUB OUT AND CAP 4" UNDERDRAIN PIPE 5' FROM INLET.
 - INSTALL MODIFIED INLET STRUCTURE, SEE DETAIL (5) CD-7.



3 DRAINAGE PROFILE
SCALE: HORIZONTAL 1"=20'
VERTICAL 1"=2'



MATCH LINE 92+50.00
SEE DRAWING NO. GD-3

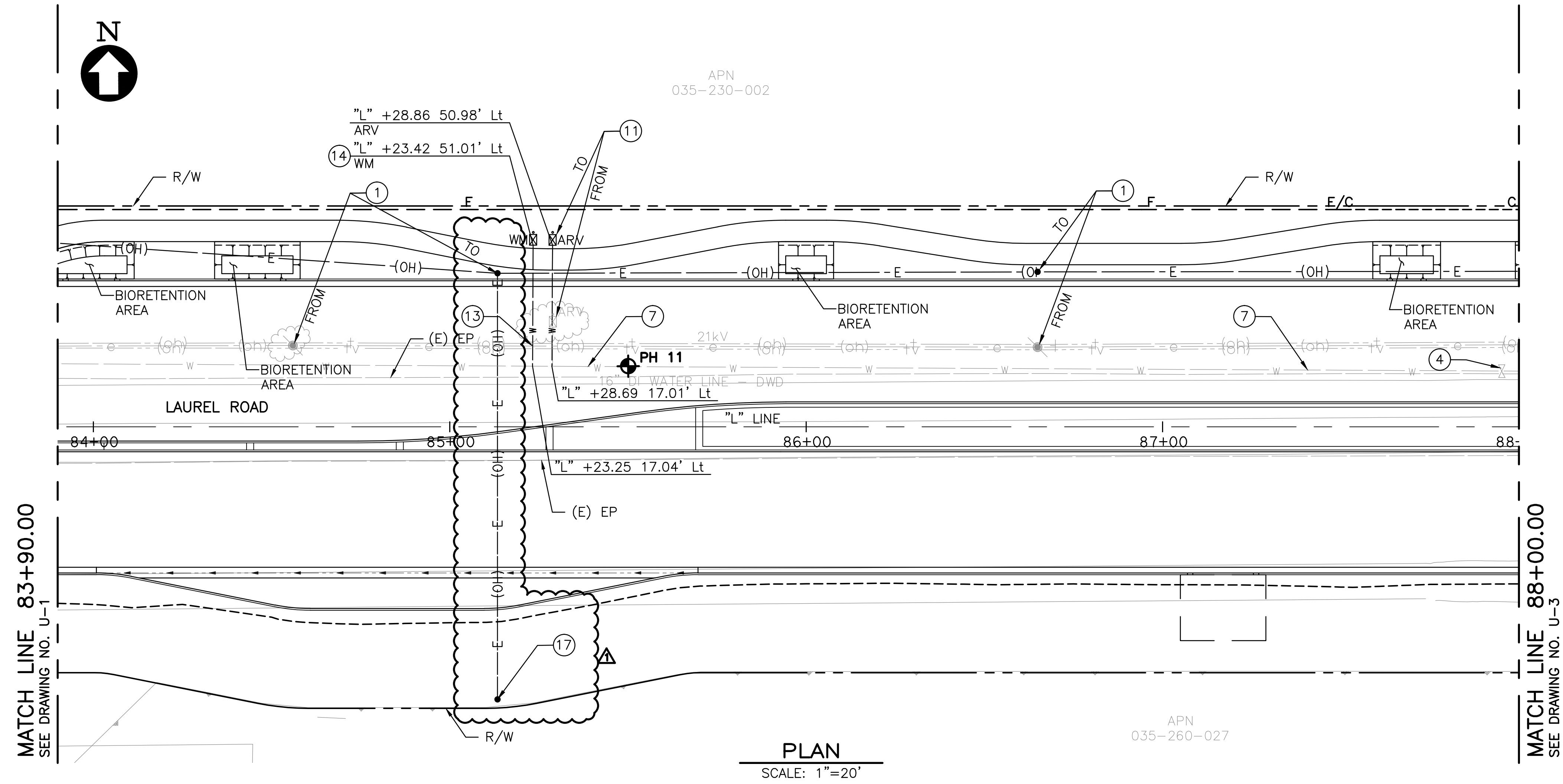
DRAWING NAME: CIP 196 - LAUREL ROAD WIDENING PROJECT FROM ROSE AVENUE TO MELLOWOOD DRIVE GRADING AND DRAINAGE PLAN
DATE: 10/19/2017
SCALE: AS NOTED
DESIGN: CC
DRAWN: AH
APPROVED: MC
JOB NO: 2017095-10

NOTES:

- THIS PLAN ACCURATE FOR UTILITIES ONLY.
- FOR STORM DRAIN INFORMATION, SEE GRADING AND DRAINAGE PLAN.
- CONTRACTOR TO VERIFY ALL EXISTING UNDERGROUND UTILITIES BEFORE CONSTRUCTION, BOTH HORIZONTAL AND VERTICAL.
- FOR WATER DETAILS, REFER TO DIABLO WATER DISTRICT STANDARD SPECIFICATIONS AND DRAWINGS AND CONTRA COSTA COUNTY WATER DISTRICT STANDARD DETAILS.
- ALL AC PIPE REMOVED BY CONTRACTOR SHALL BE DISPOSED OF IN ACCORDANCE WITH CALIFORNIA REGULATIONS.
- CONTRACTOR SHALL CONFIRM WITH UTILITY OWNER THAT UTILITY HAS BEEN ABANDONED BEFORE REMOVING OR MODIFYING ANY ABANDONED UTILITY.
- ALL WATER LINE TRENCHING SHALL CONFORM TO DIABLO WATER DISTRICT STANDARDS. SEE DETAIL **(2)** CD-3
- PROPOSED OVERHEAD LINES (OH) INCLUDE ELECTRICAL, TELEPHONE AND TELEVISION.
- CONTRACTOR SHALL POTHOLE EXISTING WATER LINE PRIOR TO RELOCATION.
- CONTRACTOR SHALL INSTALL WATER LINE 36 INCHES BELOW FINISH GRADE. COORDINATE WITH CIP 191 CONTRACTOR.
- COORDINATION LINE AND CIP 191 IMPROVEMENTS SHOWN FOR REFERENCE ONLY. CONTRACTOR SHALL COORDINATE WITH WORK DONE BY OTHERS AT THE INTERSECTION OF LAUREL ROAD/ROSE AVENUE FOR CIP 191. CONTRACTOR IS RESPONSIBLE FOR ALL WORK SHOWN ON THESE PLANS.
- CONTRACTOR SHALL COORDINATE WITH ON-SITE IMPROVEMENTS FOR DUARTE RANCH (9027). POLE AND GUY WIRE TO BE REMOVED (BY OTHERS) PRIOR TO DRIVEWAY INSTALLATION.

ITEMS OF WORK:

- RELOCATE JP AND RESTRING OH ELECTRICAL, TELEPHONE AND CABLE TV CABLES. PLACE GUY WIRES WHERE REQUIRED (BY OTHERS)
- PROTECT IN PLACE ARV
- ADJUST ETS BOX TO GRADE, SEE DETAIL **(2)** CD-2
- ADJUST WATER VALVE TO GRADE, SEE DETAIL **(3)** CD-3
- PROTECT IN PLACE FIRE HYDRANT
- PROTECT IN PLACE JOINT POLE AND GUY WIRE
- PROTECT IN PLACE WATER LINE
- RELOCATE WAPA TRANSMISSION POLES AND RESTRING OH ELECTRICAL (BY OTHERS)
- REMOVE GUY POLE (BY OTHERS)
- PROTECT IN PLACE WATER MAIN
- RELOCATE ARV FROM WATER MAIN WITH NEW COPPER SVC LINE PER DWD 20 **(5)** CD-3
- RELOCATE WATER VALVE AND WATER LINE PER CONTRA COSTA COUNTY WATER DISTRICT STANDARD DETAILS. COORDINATE WITH PROPERTY OWNER. SEE NOTE 10. **(6)** CD-3
- TAP AND CONNECT TO EXISTING WATER LINE PER DWD STD PLANS AND SPECIFICATION. NEW 1" COPPER SVC LINE PER DWD STANDARD PLANS AND SPECIFICATIONS. **(6)** CD-3
- NEW WM AND BOX PER DWD 8. CONNECT TO IRRIGATION CONTROLLER. SEE LANDSCAPING PLANS. **(6)** CD-3
- PROTECT IN PLACE WATER VALVE
- INSTALL JOINT POLE (BY OTHERS)

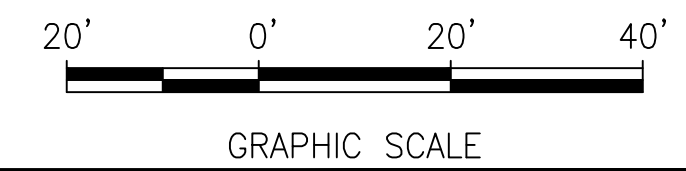
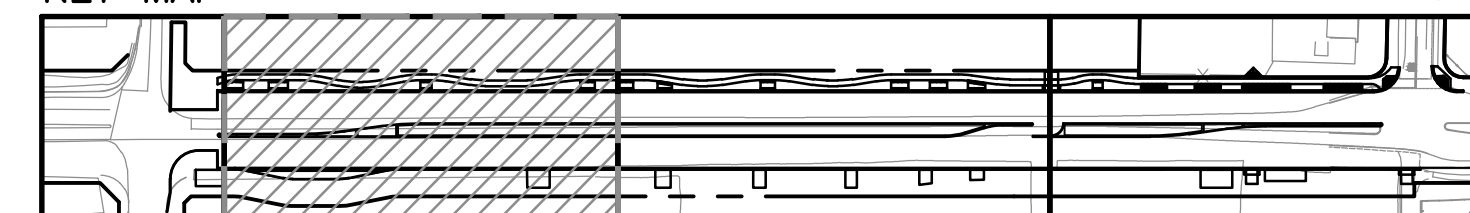


PLAN
SCALE: 1"=20'

LEGEND:

EXISTING		PROPOSED	
-----g-----g-----	Exist GAS LINE	(OH)-----E-----	PROPOSED OH LINE (INCLUDES ELECTRICAL, TELEPHONE AND TELEVISION) - BY OTHERS.
(oh)-----e-----	Exist Elect OH LINE	-----W-----W-----	PROPOSED WATER LINE
----+v------(oh)-----	Exist CATV OH LINE	•	PROPOSED WATER PIPE
----+------(oh)-----	Exist TELE OH LINE	WV	PROPOSED WATER VALVE IN CHRISTY BOX
-----s-----s-----	Exist SANITARY SEWER LINE	•	PROPOSED POLE
-----e-----e-----	Exist Elect LINE		
-----w-----w-----	Exist WATER LINE		
⊙	Exist SSMH		
•	Exist WATER PIPE		
▽	Exist WATER VALVE		
WM	Exist WATER METER		
ETS	Exist ETS		
○	Exist POLE		
○	Exist GUY WIRE		
⊕	POTHOLE		

KEY MAP



DRAWING NAME: \\BKF\apps\2017095\10\20181019\20181019_ADDENDUM_1.dwg DATE PLOTTED: 10/19/2017 10:58:11 AM