

# OAKLEY



CALIFORNIA

Agenda Date: 10/11/2016  
Agenda Item: 3.8

## STAFF REPORT

**Date:** Tuesday, October 11, 2016

**To:** Bryan H. Montgomery, City Manager

**From:** Kevin Rohani, P.E. Public Works Director/City Engineer

**Subject:** Approval of Subdivision Improvement Agreement and Final Map for Subdivision 9350 Emerson Ranch Neighborhood 4 (Northwest corner, Cypress Road and Sellers Avenue)

Approved and Forwarded to City Council:

  
Bryan H. Montgomery, City Manager

### Background and Analysis

On September 14, 2010 the City Council adopted Resolution 107-10 conditionally approving the tentative map for Subdivision 9032, a 578-lot residential subdivision with a 24 acre commercial parcel at the northwest corner of Cypress Road and Sellers Avenue. Subdivision 9348 Neighborhood 4 is the fifth phase of the Emerson Ranch development.

The final map for the first phase was called Subdivision 9032 but for clarity it will be referred to as Neighborhood 1. Subdivision 9349 will be referred to as Neighborhood 3, Subdivision 9350 as Neighborhood 4 and Subdivision 9351 as Neighborhood 5.

Final maps for Neighborhood 3 and Neighborhood 5 were approved by the Council and recorded in 2015. All grading and public improvements for Neighborhood 4 were completed at the same time as the improvements for Neighborhood 3 and Neighborhood 5.

The engineer's cost estimate for the public improvements is for \$435,000. Since the improvements and landscaping are already completed, City Staff and the developer agreed to a bond amount of \$43,500 in the event any deficiencies are discovered in the future before the subdivision is accepted by the City.

Brookfield Emerson Land LLC, a Delaware Limited Liability Company (Brookfield) has now requested approval by the City Council for the final map for Neighborhood 4.

In order to satisfy all remaining conditions of approval the applicant has requested that the City enter into a Subdivision Improvement Agreement.

The City Engineer and City Surveyor have reviewed the tentative map approval documents and the final map, and have found the map to be technically correct, in substantial compliance with the conditionally approved tentative map, and all final map conditions of approval have been met (or are being secured by way of this agreement).

**Fiscal Impact**

There is no fiscal impact associated with this action.

**Staff Recommendation**

Staff recommends that the City Council adopt the Resolutions authorizing the City Manager to execute the Subdivision Improvement Agreement and approving the Final Map for Subdivision 9350 Emerson Ranch Neighborhood 4.

**Attachments**

- 1) City Council Resolution 107-10
- 2) Subdivision Improvement Agreement (SIA)
- 3) Resolution for SIA
- 4) Resolution Approving the Final Map titled Subdivision 9350 Emerson Ranch Neighborhood 4
- 5) Neighborhood 4 location map
- 6) Reduction of Subdivision 9350 Emerson Ranch Neighborhood 4 Final Map

**RESOLUTION NO. 107-10**

**A RESOLUTION OF THE CITY OF OAKLEY CITY COUNCIL MAKING FINDINGS AND APPROVING THE EMERSON PROPERTY PROJECT VESTING TENTATIVE SUBDIVISION MAP (9032) TO SUBDIVIDE APPROXIMATELY 140 ACRES INTO 578 SINGLE FAMILY LOTS, A 24 ACRE COMMERCIAL PARCEL, AND OTHER PARK, TRAILS, OPEN SPACE AND STORMWATER DETENTION POND PARCELS, AND DESIGN REVIEW APPROVAL OF THE HOMES AND COMMERCIAL DEVELOPMENT PLAN. THE PROJECT IS LOCATED ON THE NORTHWEST CORNER OF EAST CYPRESS ROAD AND SELLERS AVENUE (APN 037-192-026)**

**FINDINGS**

**WHEREAS**, in February of 2007, the applicant filed an application for approval of the Emerson Property Project - Subd. 9032 ("Project"), which included requests for a rezone to P-1 District and approval of a PD Plan, approval of a vesting tentative map to subdivide 140 acres into 662 single family lots and one approximately 10.5 commercial site, and design review approval of the homes and commercial development plan; and

**WHEREAS**, on or about April of 2008, the applicant filed a revised vesting tentative map and made an additional request for a General Plan Amendment. The revised map included 578 single family lots and an approximately 23.74 acre commercial site; and

**WHEREAS**, the revised Project included applications for the following:

- A General Plan Amendment to designate approximately 24 acres of the site to the "Commercial" land use designation;
- A rezone to P-1 (Planned Development) District and approval of the Planned Development Plan;
- A Vesting Tentative Map ("VTM") 9032 to subdivide approximately 140 acres into a 24 acre commercial parcel, 578 single family residential parcels, and other parcels containing parks, trails, open space and a stormwater treatment facility; and
- Design review for the conceptual design and signage for the commercial site, housing plans and elevations, and conceptual landscaping throughout the development and in the adjacent right-of-way.

**WHEREAS**, on September 3, 2010, the Notice of Public Hearing for the Project was duly noticed in the Contra Costa Times, a newspaper of general distribution. The Notice of Public Hearing was also posted at Oakley City Hall, Freedom High School, and at 204 2<sup>nd</sup> Street (City Annex); and

**WHEREAS**, on September 14, 2010, the City Council opened the public hearing at which it received a report from City Staff, oral and written testimony from the public, and deliberated on the project. At the conclusion of its deliberations, the City Council took a vote and adopted this resolution to approve the project, as revised by the City Council during its deliberations; and

**WHEREAS**, at the September 14, 2010 public hearing, the City Council introduced the project's rezone ordinance (P-1 District), which included modifications that affected the proposed vesting tentative map and design review packets, as follows:

- Deletion of 11 lots, lot numbers 530 – 540, located adjacent to the proposed park along "X" Street and "Y" Court. As a result, the project has a total of 567 residential lots; and
- Deletion of the apartment alternative as a permitted use and deletion of the apartment site plan and references in the PD Plan and Design Review packet, with allowance for the developer to bring the apartment alternative back to the City Council no sooner than March of 2013 for reconsideration.

**WHEREAS**, if any term, provision, or portion of these Findings or the application of these Findings to a particular situation is held by a court of competent jurisdiction to be invalid, void or unenforceable, the remaining provisions of these Findings, or their application to other actions related to the Project, shall continue in full force and effect unless amended or modified by the City.

**WHEREAS**, these Findings are based on the City's General Plan, the City's Zoning and Subdivision Ordinances, and the information submitted to the City Council at its September 14, 2010 meeting, both written and oral, including oral information provided by the applicant, as reflected in the minutes of such meetings, together with the documents contained in the file for the Subdivision (hereafter the "Record").

**WHEREAS**, the City Council hereby makes the following factual findings regarding this application:

- A. The Environmental Impact Report (EIR) for the Emerson Property Project Subdivision 9032 was certified by the City Council on September 14, 2010. The vesting tentative map and design review applications were analyzed under the Project EIR;
- B. At its September 14, 2010 public hearing, the City Council approved a General Plan Amendment for the Project that increased the Commercial designation in the Dutch Slough area, and project site, from 12 acres to 24 acres;
- C. Also at its September 14, 2010 public hearing, the City Council introduced an ordinance to rezone the Project site from A-3 (Heavy Agriculture) District to P-1 (Planned Development) District; and

- D. The real property affected by this vesting tentative map is designated Single-Family Medium (SM), Single Family High (SH), Multi Family High (MH), and Commercial in the Oakley 2020 General Plan and zoned P-1 (Planned Development) District.

**NOW, THEREFORE, BE IT RESOLVED THAT,** on the basis of the above Findings and the entire Record, the City Council makes the following additional findings in support of the recommended approvals:

- A. Regarding the application requesting approval of a Vesting Tentative Map (Subd. 9032) to subdivide 140 acres into 567 lots, a 24 acre commercial parcel, and other park, trail, open space and stormwater detention pond parcels, the City Council finds that:

The proposed Vesting Tentative Map, together with the provisions of its design and improvements, is consistent with the Zoning Code, adopted P-1 District, as modified to be consistent with the applicable P-1 District PD Plan, and applicable General Plan land use designations, as approved by City Council for the Project, in that it allows for orderly residential development in a residential area, and commercial development in an adequately sized and dedicated commercial area that meets the General Plan density allowance and complies with all of the applicable regulations set forth in the project's P-1 District;

1. The site is physically suitable for the type of development in that the proposed Vesting Tentative Map meets all of the applicable development standards in the project's P-1 District, which contains development standards for residential and commercial development on the subject site. It is served by public streets, and it can be served by utilities;
2. The site is physically suitable for the proposed gross density of development at 4.1 dwelling units per gross acre, which, when combined with Gilbert Subdivision 9033's gross density, complies with the overall Dutch Slough maximum gross density of 4.4 dwelling units per acre. The increase in the commercial site's acreage and swap of approximately six acres from Gilbert to Emerson, per a memorandum of understanding, results in the Emerson gross density being slightly lower than the overall Dutch Slough range;
3. The proposed Vesting Tentative Map and all identified mitigation measures have been incorporated into Project EIR and Mitigation and Monitoring Plan, prepared in accordance with the CEQA Guidelines, which was certified by the City Council on September 14, 2010;
4. The design of the subdivision and type of improvements are not likely to cause serious public health problems in that the proposed subdivision consists of 567 single-family residential lots, 24 acre commercial site and associated improvements, configured in a rectangular manner.

Construction and grading are subject to building or grading permits, and violations of any such permits are subject to appropriate enforcement;

5. The design of the subdivision includes the construction of improvements within the right-of-way that are consistent with major subdivisions and the City's design standards. The improvements consist of roads, sidewalks, curbs and gutters; and
  6. The design of the subdivision and the type of improvements will not conflict with easements, acquired by the public at large, for access through or use of, property within the proposed subdivision. In this connection, the governing body may approve a map if it finds that alternate easements, for access or for use, will be provided, and that these will be substantially equivalent to ones previously acquired by the public. This subsection shall apply only to easements of record or to easements established by judgment of a court of competent jurisdiction and no authority is hereby granted to a legislative body to determine that the public at large has acquired easements for access through or use of property within the proposed subdivision. The Vesting Tentative Map does not conflict with easements acquired by the public for access and utilities.
- B. Regarding the application for Design Review approval of the proposed house floor plans and architectural designs, and conceptual commercial development plan and architectural design, the City Council finds as follows:
1. The proposed house floor plans and architectural designs comply with the Oakley Residential Design Guidelines and provide for a quality project in that:
    - a. The proposed house floor plans offer recessed or side loaded garages, thereby de-emphasizing the garage door presence on the street;
    - b. Front facade materials, such as wood siding and window trim are used on all four elevations;
    - c. Roof forms and materials are relevant to the architectural style on which they sit. Roof styles include flat and shape concrete tile, wood shingle concrete tile, and architectural grade composition shingle; The architecture incorporates a variety of floor plans, building mass sizes and heights, and color schemes; and
    - d. Architectural elements such as wainscot and brick façade are used on appropriate elevation styles.

2. The proposed conceptual commercial development plan and architectural design complies with the Oakley Commercial and Industrial Design Guidelines and provides for a quality project in that:
  - a. The corner of East Cypress Road and Sellers Avenue is lined with two building pads and an outdoor plaza area, creating a focal point for the development;
  - b. Larger buildings are shown further back from the main streets, with ample setbacks to the adjacent property lines;
  - c. Pedestrian connections to the commercial area from the adjacent residential area are planned at the northwest corner, near the park and stormwater pond;
  - d. Architecturally the buildings provide a rustic, rural feel, similar to old farm or dairy buildings. Some corner elements of medium and small retail buildings simulate a metal silo;
  - e. A mix of stucco and wood siding compliments the residential architectural styles, but does not mimic them; and
  - f. Various wall elements, such as awnings, lattice and faux barn doors help to break up otherwise large, blank "canvases" of some buildings.

C. The Project complies with Measure J Growth Management requirements.

**BE IT FURTHER RESOLVED THAT**, on the basis of the foregoing Findings and the entire Record, the City Council take the following actions:

- A. A Vesting Tentative Map ("VTM") 9032 to subdivide approximately 140 acres into a 24 acre commercial parcel, 567 single family residential parcels, and other parcels containing parks, trails, open space and a stormwater treatment facility; and
- B. Design review for the residential architecture and conceptual design review for the commercial center.

**BE IT FURTHER RESOLVED THAT**, on the basis of the above Findings and the Record, the City Council approves the applicant's request for approval of Vesting Tentative Map 9032 design review approval, subject to the following conditions:

**Conditions of Approval**

- A. Applicant shall comply with the requirements of the Oakley Municipal Code. Any exceptions must be stipulated in these Conditions of Approval. Conditions of Approval are based on the plans received by the Community Development

Department and made a part of the City Council's meeting packet for September 14, 2010.

**THE FOLLOWING CONDITIONS OF APPROVAL SHALL BE SATISFIED PRIOR TO THE ISSUANCE OF A BUILDING PERMIT UNLESS OTHERWISE NOTED:**

**Planning Division Conditions**

**General:**

1. The applicant shall modify the Vesting Tentative Map, other related maps, and the Design Review packets to be consistent with the modification adopted as part of the Project's P-1 District PD Plan approval, including removal of 11 lots adjacent to the proposed park. The applicant shall submit a modified map and design review packets to the Community Development Department for the project file.
2. The Vesting Tentative Map and Design Review, stamped approved September 14, 2010 shall be implemented, as modified by the following conditions of approval, subject to final review and approval by the Community Development Director.
3. The Vesting Tentative Map approval shall be valid for a period of three (3) years from the effective date of this resolution by recording a final map. Prior to said expiration date, the applicant may apply for an extension of time pursuant to the provisions of the Municipal Code. The Design Review approval shall run concurrently with the tentative map approval.
4. All construction drawings submitted for plan check shall be in substantial compliance with the plans presented to and approved by the City Council in conjunction with this resolution and as a part of the Project's adopted PD Plan.
5. All conditions of approval shall be satisfied by the owner/developer. All costs associated with compliance with the conditions shall be at the owner/developer's expense.
6. The applicant shall implement all applicable mitigation measures as adopted in the certified Emerson Property Environmental Impact Report/Mitigation and Monitoring Program.
7. The applicant shall participate in the East Contra Costa County Habitat Conservation Plan and pay any applicable fee as required per the MOA between the developers and the Habitat Conservation Plan Association.
8. The applicant shall indemnify, defend, and hold harmless the City of Oakley, the City Approving Authorities, and the officers, agents, and employees of the City



from any and all claims, damages and liability (including, but not limited to, damages, attorney fees, expenses of litigation, costs of court.

**Development Standards:**

9. The Planned Development (P-1) zone district shall have the following standards:

**Neighborhood 1 (60' x 100' Typical)**

- Minimum lot area: 6,000 square feet;
- Minimum lot frontage: 60' at the front property line;
- Minimum front yard setback: 20' to garage, 20' to any living space, 15' to any porches, and 15' to side loaded garages, all measured perpendicular to the structure;
- Minimum side yard setback: 5' minimum, sum of both sides 10', corner lots shall maintain a street side yard setback of 10';
- Projections subject to OMC 9.1.1122(g);
- Minimum rear yard: 15'.

**Neighborhood 2 (48' & 52' & 57' x 100' Typical)**

- Minimum lot area: 4,800 square feet;
- Minimum lot frontage: 48' at the front property line;
- Minimum front yard setback: 20' to garage, 15' to any living space, 10' to any porches, and 15' to side loaded garages, all measured perpendicular to the structure;
- Minimum side yard setback: 5' minimum, sum of both sides 10', corner lots shall maintain a street side yard setback of 10';
- Projections subject to OMC 9.1.1122(g);
- Minimum rear yard: 15'.

**Neighborhood 3 (43' & 45' & 47' & 52' x 85' Typical)**

- Minimum lot area: 3,655 square feet;
- Minimum lot frontage: 43' at the front property line;
- Minimum front yard setback: 20' to garage, 15' to any living space or side loaded garage, and 10' to any porches, all measured perpendicular to the structure;
- Minimum side yard setback: 5' minimum, sum of both sides 10', corner lots shall maintain a street side yard setback of 10';
- Projections subject to OMC 9.1.1122(g);
- Minimum rear yard: 15'.

**Neighborhood 4 (40' & 45' & 50' & 55' x 90' Typical)**

- Minimum lot area: 3,600 square feet;
- Minimum lot frontage: 40' at the front property line;
- Minimum front yard setback: 20' to garage, 15' to any living space, side loaded garage, and 10' to any porches, all measured perpendicular to the structure;
- Minimum side yard setback: 5' minimum, sum of both sides 10', corner lots shall maintain a street side yard setback of 10';

- Projections subject to OMC 9.1.1122(g);
- Minimum rear yard: 15'.

#### Neighborhood 5 (Z-Lots Typical)

- Minimum lot area: 3,350 square feet;
- Minimum lot frontage: 34' at the front property line;
- Minimum front yard setback: 20' to garage, 15' to side loaded garage, 15' to any living space, and 5' to any porches, all measured perpendicular to the structure;
- Minimum side yard setback: 3' minimum for interior zippers, 5' minimum for interior typical side, sum of both sides 8', corner lots shall maintain a street side yard setback of 10';
- Projections subject to OMC 9.1.1122(g);
- Minimum rear yard: 5' to Garage & 15' to Living Only.

#### All Neighborhoods

- Any lot with a front lot line where at least 50% of its length is concave, shall have a minimum lot frontage equal to half of the applicable neighborhood's minimum lot frontage (i.e. A lot in Neighborhood 1 is in the back of a cul-de-sac and its entire front lot line is concave. The minimum length of that lot frontage would be 30', rather than 60')
- The lot frontage for any corner lot, where the front and/or side yard lot lines are angled before intersecting, will be measured from the interior side and front lot line intersection to a point where the front and corner side lot lines would intersect if one or both were not angled.

#### **Parks and Landscaping:**

10. This project is subject to the Quimby Act and has a parkland requirement of five acres per 1,000 residents. The City General Plan establishes an average person per household of 3.21. The total amount of parkland, parkland in-lieu fees, or a combination of parkland and in-lieu fees will be established depending on the total number of approved housing units. As shown on the proposed vesting tentative map, the applicant has proposed a neighborhood park, located generally in the middle of the development, and a trail, located along the northern levee of the project. For park credits, the applicant will receive full credit for all final acreage located within the neighborhood park, and one-half credit for all acreage located within the trail ("Parcel A" on the VTM). The applicant shall pay in-lieu fees, subject to the City's parkland dedication and improvement impact fee, for any remainder parkland not constructed as part of the project.

11. The applicant shall work with the Community Development Department on the design, construction and completion of the park concurrent with the development of the subdivision. As part of the plan check process for the project, the applicant shall develop a park construction schedule approved by the Community Development Director to provide for the timely completion of the park concurrent with development.

12. A mix of evergreen and deciduous trees as well as shrubs and ground cover shall be planted along the street frontage as specified in the Residential Design Guidelines per the review and approval of the Community Development Director.
13. A landscaping and irrigation plan for all areas shown on the landscape plan shall be submitted, in phases as applicable, for review and approval of the Community Development Director prior to the issuance of building permits. Landscaping shall conform to the Oakley Landscape Guidelines and the City's Water Conservation Landscape Ordinance 82-26 and shall be installed prior to final occupancy. The plan shall be prepared by a licensed landscape architect and shall be certified to be in compliance with the City's Water Conservation Ordinance.
14. All landscaping shall comply with the City of Oakley water Efficient Landscape Ordinance.
15. All landscaped areas not covered by shrubs or groundcover shall be covered with bark or acceptable alternative as reviewed and approved by the Community Development Director. On slopes greater than 3 to 1, the applicant shall use an alternative to bark per the review and approval of the Community Development Director.
16. Each residential lot shall have a minimum number of trees along the street frontage, as indicated below:
  - Neighborhood 1 - Minimum of two trees, except corner lots shall have a minimum of four trees.
  - Neighborhoods 2, 3, and 4 – Minimum of two trees, except corner lots shall have a minimum of three trees.
  - Neighborhood 5 – Minimum of one tree, except corner lots shall have a minimum of three trees.

The installed location of the trees shall be in substantial compliance with the Front Yard Preliminary Landscape Plans as shown in the approved "Residential Architecture – Neighborhoods 1-5" approved by City Council and in conjunction with this Design Review approval.

17. The applicant shall install front yard landscaping on all residential lots per the Residential Design Guidelines and City of Oakley Water Efficient Landscape Ordinance, unless otherwise modified herein. The applicant shall maintain all private landscaping until occupancy.
18. A street tree plan shall be submitted for review prior to issuance of residential Building Permits (by phase as applicable). The street trees shall be inter-mixed throughout the subdivision, so there are a variety of trees on every street, per review of the Community Development Department.

19. The landscape plan along the levees shall be revised to ensure no trees or incompatible plant materials are planted within the levee prism per the approval of the Community Development Director and City Engineer.
20. Parcels C, D, E, F, G, I, J, and K, as shown on the Vesting Tentative Map stamped approved September 14, 2010, shall be fully landscaped with trees, shrubs and ground cover per the review and approval of the Community Development Director.
21. The commercial parcel shall be fully landscaped with trees, shrubs and ground cover per a landscape plan, subject to the review and approval of the Community Development Director prior to issuance of building permits for that parcel.

**Fences and Walls:**

22. Within the subdivision good neighbor fences shall be constructed of six-foot high wood fences with metal posts or acceptable alternative as reviewed and approved by the Community Development Director. Corner lots facing a street shall provide an enhanced wood fence with one foot of lattice along the top.
23. Fences that adjoin the trail system adjacent to the CCWD canal shall be constructed to provide for greater durability and enhanced appearance and consistent with the fencing extending from the Cypress Grove subdivision, per the review and approval of the Contra Costa Water District, as applicable.
24. A masonry wall, as shown in the Residential Architecture plans approved by City Council and in conjunction with this Design Review, shall be located along the Cypress Road residential area frontage and residential areas immediately adjacent to the commercial uses, per the acoustical analysis. A wall/berm combination may be provided to achieve the height requirement. The wall shall be of pre-cast concrete construction per the review and approval of the Community Development Director. In the locations where cul de sacs or front loaded streets are adjacent to Cypress Road, wrought iron or 42" picket fences shall be constructed to provide open views per the review and approval of the Community Development Director.
25. Anti-graffiti techniques and/or materials shall be used on sound walls (e.g., split-face CMU, and/or wall planting & other landscaping).

**Subdivision Design:**

26. Driveway openings shall be a maximum 18' in width or up to 25% of a lot's frontage (except on cul de sacs), whichever is more.
27. The street names shall be approved by the Community Development Department and the Fire District.

28. A life saving device shall be provided along the trail adjacent to the storm water pond to provide assistance for a drowning victim.

**Subdivision Disclosures:**

29. Where a lot/parcel is located within 300' of a high voltage electric transmission line, the applicant shall record the following notice:

"The subject property is located near a high voltage electric transmission line. Purchasers should be aware that there is ongoing research on possible potential adverse health effects caused by the exposure to a magnetic field generated by high voltage lines. Although much more research is needed before the question of whether magnetic fields actually cause adverse health effects can be resolved, the basis for such a hypothesis is established. At this time no risk assessment has been made."

When a Final Subdivision Public Report issued by the California Department of Real Estate is required, the applicant shall also request that the Department of Real Estate insert the above note in the report, as may be applicable to any HOA formation.

30. The following statements shall be recorded at the County Recorder's Office for each parcel to notify future owners of the parcels that they own property in an agricultural area:

"This document shall serve as notification that you have purchased land in an agricultural area where you may regularly find farm equipment using local roads; farm equipment causing dust or blowing sand; crop dusting and spraying occurring regularly; burning associated with agricultural activities; noise associated with farm equipment such as zone guns and aerial crop dusting and certain animals, including equestrian trails as well as flies may exist on surrounding properties. This statement is again, notification that this is part of the agricultural way of life in the open space areas of the City of Oakley and you should be fully aware of this at the time of purchase."

**Design Review:**

31. The homes and floor plans shall be consistent with those approved in the design review packet and PD Plan approved by City Council and stamped approved September 14, 2010. Any subsequent change to the floor plans or architecture of the homes shall be subject to City Council review and approval.

32. All windows shall be trimmed on all four sides.
33. Garage doors that face the street shall include windows as an option to future buyers.

**Energy Efficiency:**

34. Water heaters shall provide an energy efficiency factor of 0.84 or better.
35. Air conditioning condenser units shall be located to take advantage of natural shade, where feasible without interfering with practical use of yard space. Condensers should not be placed on the west or south elevation of a home, unless shade is provided. The location of the condenser shall be added to all plot plans for review and approval of the Community Development Director. Condensers located in side yards shall allow for a minimum of three feet (3') of clearance between condenser and either the house or fence.
36. Subdivisions design should take into consideration passive solar energy and house orientation should take advantage of this.
37. High efficiency furnaces in compliance with UBC Title 24 Codes.

**Tree Permit**

38. The applicant is approved to remove 69 onsite and 15 offsite trees as shown on the tree removal plan, and shall replace them with street trees and ornamental landscape trees, in substantial compliance with the Preliminary Landscape Plans approved as part of the PD Plan, per review by the Community Development Director.

**Building Division Conditions**

39. Plans shall meet the currently adopted Uniform Codes as well as the newest T-24 Energy Requirements per the State of California Energy Commission. To confirm the most recent adopted codes please contact the Building Division at (925) 625 – 7005.
40. An Automatic Life Safety Sprinkler System shall be required in all new residential occupancies pursuant to Ordinance 22-06.
41. Prior to requesting a Final Inspection from the Building Division all Conditions of Approval required for occupancy must be completed.

## Public Works and Engineering Conditions

### **General:**

42. Submit improvement plans prepared by a registered civil engineer to the City Engineer for review and approval and pay the appropriate processing costs in accordance with the Municipal Code and these conditions of approval. The plans shall be consistent with the Stormwater Control Plan for the project, include the drawings and specifications necessary to implement the required stormwater control measures, and be accompanied by a Construction Plan C.3 Checklist as described in the Stormwater C.3 Guidebook.
43. Submit a final map prepared by a licensed land surveyor or qualified registered civil engineer to the City Engineer and pay appropriate fees in accordance with the Code and these conditions of approval. Final Maps may be phased for separate neighborhoods, commercial parcel(s), and apartment parcel(s), and on or off-site improvements may be phased as applicable to match the development allowed by each Final Map at the discretion of the City Engineer. Up to ten phased Final Maps may be filed.
44. Submit grading plans including erosion control measures and revegetation plans prepared by a registered civil engineer to the City Engineer for review and pay appropriate processing costs in accordance with the Code and these conditions of approval. The Grading Plan may be phased to coincide with on or off-site improvements as applicable, at the discretion of the City Engineer. Grading plans may be issued prior approval of improvement plans, at the discretion of the City Engineer.
45. Submit landscaping plans for publicly maintained landscaping by phased neighborhood, commercial parcel(s), and apartment parcel(s), including planting and irrigation details, as prepared by a licensed landscape architect to the City Engineer for review and pay appropriate processing costs in accordance with the Code and these conditions of approval.
46. Execute any agreements required by the Stormwater Control Plan which pertain to any temporary easements, transfer of ownership and/or long term maintenance of stormwater treatment mechanisms required by the plan prior to the final inspection of the first house, apartment, or commercial building within the subdivision, or within each phase as applicable. Any temporary storm drainage ponds shall comply with the safety margins noted in EIR technical analyses, at the discretion of the City Engineer.
47. Building permits for house construction shall not be issued until the subdivision streets serving the lots have been paved.

### **Roadway Improvements:**

48. Submit a phasing plan for roadway and infrastructure improvements to the City Engineer for approval if the project is being phased. It is anticipated that the Cypress Road and Seller Avenue improvements described in the following conditions will be phased to coincide with the phasing of the commercial and residential components of the project.
  
49. Construct the frontage of Cypress Road to City public road standards for a 40-foot half width roadway within a 65-foot half width right of way, including curb, eight-foot detached sidewalk (meandering within the landscape area so that the minimum landscape width is no less than six feet), right of way landscaping, necessary longitudinal and transverse drainage, pavement widening, and conforms to existing improvements. The face of curb shall be located 40 feet from the centerline and any conforms to existing improvements must take place outside of the limits of the project. The resulting cross section, including new and existing pavement, shall provide a minimum of two west bound 12 foot travel lanes, one east bound 12 foot travel lane, and associated turn lanes in accordance with the traffic analysis and City Engineer. The improvements are intended to be generally consistent with the "Emerson Ranch Project Frontage Improvements" exhibit prepared by Carlson, Barbee and Gibson, Inc. and dated April 28, 2010. The improvements may require slurry sealing and/or striping modifications as determined by the City Engineer to result in a safe and logical road segment. Ten feet of the west bound travel lanes (adjacent to the striped median) is eligible for reimbursement from the City's Traffic Impact Fee Program subject to a future reimbursement agreement. The agreement must be approved by the City Council prior to approving the final map for the costs to be reimbursable.
  
50. Construct the frontage of Sellers Avenue to City public road standards for a 40-foot half width roadway within a 70-foot half width right of way, including curb, eight-foot detached sidewalk (meandering within the landscape area so that the minimum landscape width is no less than six feet), right of way landscaping, necessary longitudinal and transverse drainage, pavement widening, and conforms to existing improvements. The face of curb shall be located 40 feet from the centerline and any conforms to existing improvements must take place outside of the limits of the project. The resulting cross section, including new and existing pavement, shall provide a minimum of one north bound 12 foot travel lane, one south bound 12 foot travel lane, and associated turn lanes in accordance with the traffic analysis and City Engineer. The improvements are intended to be generally consistent with the "Emerson Ranch Project Frontage Improvements" exhibit prepared by Carlson, Barbee and Gibson, Inc. and dated April 28, 2010. The improvements may require slurry sealing and/or striping modifications as determined by the City Engineer to result in a safe and logical road segment. New pavement in excess of twenty feet as measured from the face of curb to the east that will be used as part of the ultimate roadway may be eligible for reimbursement from the City's Traffic Impact Fee Program subject to



a future reimbursement agreement. The agreement must be approved by the City Council prior to approving the final map for the costs to be reimbursable.

51. Construct the bus stop along the north side of Cypress Road consistent with EIR Mitigation Measure 4.3-6. The bus stop shall be consistent with Tri Delta Transit and City standards and shall include any necessary shelters and appurtenances. The right of way adjacent to the bus stop shall be widened so that the landscaping widths are consistent with the remainder of the frontage. The bus stop structure shall be built prior to issuance of the certificate of occupancy for the first commercial (retail or office) or multi-family apartment building.
52. Construct the project streets to City public road standards and as shown on the approved Tentative Map with the following exceptions:
  - A. The minimum street grade may be lowered from the standard 1% to 0.75% provided that the project proponent demonstrates that the City's drainage standards can be achieved.
  - B. Submit a turning radius exhibit to the City Engineer for review and approval to illustrate that the ninety-degree turns of project streets can accommodate the largest expected vehicle to use the streets without the inclusion of City standard elbows. If the exhibit illustrates that elbows are necessary to accommodate the expected traffic then they shall be included in the improvement plans.
53. Install traffic signals at the following locations. The phasing, design and construction of the signals is subject to the review and approval of the City Engineer and may be based on additional traffic analysis to verify that traffic signal warrants have been met. The traffic signals shall be interconnected where appropriate. When placement of curb returns, poles and equipment is not feasible at the ultimate location the improvements will not be eligible for Traffic Impact Fee (TIF) credits (however portions of signals that are consistent with the ultimate design and locations may be eligible for fee credits).
  - A. Cypress Road at Sellers Avenue (this project is on the TIF project list and is eligible for reimbursement based on the policies and procedures of that program);
  - B. Cypress Road at A Street/Machado Lane (this project is not on the TIF project list and is not eligible for reimbursement); and
  - C. Cypress Road at Shopping Center Main Driveway (this project is not on the TIF project list and is not eligible for reimbursement).
54. Install traffic calming measures consistent with the City's Neighborhood Traffic Management Program including raised intersections or crosswalks on L Street at N Street and P Street, raised intersections or crosswalks, bulb outs, or traffic circles on Shearwater Way and Ibis Drive, and a raised crosswalk or other pedestrian safety feature from the park/stormwater pond area to the commercial

site. The traffic calming measures shall be included on the improvement plans and are subject to the review and approval of the City Engineer.

55. Install traffic control devices such as stop signs and other signing and striping on the project streets to the satisfaction of the City Engineer.
56. Design all public and private pedestrian facilities in accordance with Title 24 (Handicap Access) and the Americans with Disabilities Act.
57. Submit a phasing plan for the project streets to the City Engineer for review if the street improvements will be phased. The plan shall include provisions for emergency vehicle access, temporary turn-around facilities, and access to the occupied lots.

**Road Alignment/Sight Distance:**

58. Submit a preliminary plan and profile to the City Engineer for review showing all required improvements to Cypress Road and Sellers Avenue. The sketch plan shall be to scale, show horizontal and vertical alignments, transitions, curb lines, lane striping and cross sections and shall provide sight distance for a design speed of 45 miles per hour. The plan shall extend a minimum of 150 feet ± beyond the limits of the proposed work.

**Road Dedications:**

59. Convey to the City, by Offer of Dedication, the right of way for the project streets.
60. Convey to the City, by offer of dedication, the right of way for Cypress Road for the planned ultimate half width of 65-feet along the project frontage.
61. Convey to the City, by offer of dedication, the right of way for Sellers Avenue for the planned ultimate half width of 70-feet along the project frontage.
62. Relinquish abutter's rights of access along all non-primary frontages to the satisfaction of the City Engineer.
63. Furnish necessary rights of way, rights of entry, permits and/or easements for the construction of off-site, temporary or permanent, public and private road, utility and drainage improvements.

**Street Lights:**

64. Install streetlights along all project streets and the project Cypress Road and Sellers Avenue frontage. The City Engineer shall determine the final number and location of the lights, and the lights shall be on an LS2-A rate service. The lights on the project streets shall be decorative per City standards, and the lights along

Cypress Road and Sellers Avenue shall be General Electric spun aluminum "cobra head" style

**Grading:**

65. Submit a geotechnical report to the City Engineer for review that substantiates the design features incorporated into the subdivision including, but not limited to grading activities, compaction requirements, utility construction, slopes, retaining walls, levees, and roadway sections.
66. At least one week prior to commencement of grading, the applicant shall post the site and mail to the owners of property within 300 feet of the exterior boundary of the project site notice that construction work will commence. The notice shall include a list of contact persons with name, title, phone number and area of responsibility. The person responsible for maintaining the list shall be included. The list shall be kept current at all times and shall consist of persons with authority to indicate and implement corrective action in their area of responsibility. The names of the individual responsible for noise and litter control shall be expressly identified in the notice. The notice shall be reissued with each phase of major grading activity. A copy of the notice shall be concurrently transmitted to the City Engineer. The notice shall be accompanied by a list of the names and addresses of the property owners noticed, and a map identifying the area noticed.
67. Dust control measures shall be provided for all stockpiling per the review and approval of the City Engineer.
68. Grade all pads so that they drain directly to the public street at a minimum of one percent without the use of private drainage systems through rear and side yards.
69. Grade slopes with a vertical height of four feet or more at a slope of 3 to 1. Retaining walls that may be installed to reduce the slope must be masonry and comply with the City's building code.
70. Submit a dust and litter control plan to the City Engineer prior to beginning any construction activities. The dust and litter control plan shall address all items identified and shall be consistent with EIR Mitigation Measure 4.4-1.
71. Submit a haul route plan to the City Engineer for review and approval prior to importing or exporting any material from the site, if applicable. The plan shall include the location of the borrow or fill area, the proposed haul routes, the estimated number and frequency of trips, and the proposed schedule of hauling. Based on this plan the City Engineer shall determine whether pavement condition surveys must be conducted along the proposed haul routes to determine what impacts the trucking activities may have. The project proponents shall be responsible to repair to their pre-construction condition any roads along the utilized routes.

72. Prior to commencement of any site work that will result in a land disturbance of one acre or more, the applicant shall provide evidence to the City Engineer that the requirements for obtaining a State General Construction Permit have been met. Such evidence may be a copy of the Notice of Intent letter sent by the State Water Resources Control Board. The WDID Number shall be shown on the grading plan prior to approval by the City Engineer.
73. Submit an updated erosion control plan reflecting current site conditions to the City Engineer for review and approval no later than September 1st of every year while the Notice of Intent is active.
74. Submit the necessary documents, applications, or studies, if any, to show that the project meets National Flood Insurance Program and City Floodplain Management Ordinance requirements as they pertain to construction of any structures within the project boundary. FEMA's National Flood Insurance Rate Map currently shows the subject site is within Zone X (Panel 360 of 602, FIRM Map No. 06013C0360F, Effective Date June 16, 2009). This area is shown as being protected from the 1-percent-annual-chance or greater flood hazard by a levee system. If the FEMA map in effect at the time of grading permit approval includes the project levee and does not show any proposed building pads within a special flood hazard area then this condition shall be deemed satisfied.
75. Grade all pad elevations or install levees to satisfy Chapter 914-10 of the City's Municipal Code, including the degree of protection provisions.
76. The burying of any construction debris is prohibited on construction sites.

**Utilities/Undergrounding:**

77. Underground all new and existing utility distribution facilities, including those along the project frontage of Cypress Road and Sellers Avenue. The developer shall provide joint trench composite plans for the underground electrical, gas, telephone, cable television and communication conduits and cables including the size, location and details of all trenches, locations of building utility service stubs and meters and placements or arrangements of junction structures as a part of the Improvement Plan submittals for the project. The composite drawings and/or utility improvement plans shall be signed by a licensed civil engineer.
78. All utility boxes shall be installed underground and all wires and cables must be installed in conduits. Compliance with this condition shall be at the discretion of the City Engineer.
79. Above ground utility boxes shall be camouflaged per the review and approval of the City Engineer.

### **Drainage Improvements:**

80. Collect and convey all stormwater entering and/or originating on these properties, without diversion and within an adequate storm drainage facility, to an adequate natural watercourse having definable bed and banks, or to an existing adequate public storm drainage facility that conveys the storm waters to an adequate natural watercourse, in accordance with Division 914 of the Ordinance Code. The project may be eligible for reimbursement from future development for upsizing the pond and/or storm drain main lines based on the final master plan.
81. Submit a final hydrology and hydraulic report including 10-year and 100-year frequency event calculations for the proposed drainage system and stormwater pond to the City Engineer for review and approval.
82. Design and construct all storm drainage facilities in compliance with the Municipal Code and City design standards.
83. Prevent storm drainage from draining across the sidewalk(s) and driveway(s) in a concentrated manner.
84. Dedicate a public drainage easement over the drainage system that conveys storm water run-off from public streets.
85. Submit a long-term operational and maintenance plan for the publicly maintained stormwater pond, and/or any private or public interim ponds, and pump stations, to the City Engineer for review. The plan must include a level of effort estimate for staffing and maintenance requirements as well as an operational and life cycle budget analysis.
86. Convey to the City, by offer of dedication, Parcel B for open space and flood control purposes.

### **Landscaping in the Public Right of Way:**

87. Install public right of way landscaping along Cypress Road and Sellers Avenue and trail corridors. The applicant shall work with the Community Development Department and City Engineer for the design, construction and completion of the public landscaping concurrent with the phased development of the subdivision. As part of the plan check process for the landscaping, the applicant shall develop a construction schedule approved by the Community Development Director to provide for the timely completion of the landscaping concurrent with development. Public landscape phasing shall be generally performed in tandem with adjacent subdivision improvements.
88. Maintain all landscaping within the public right of way until such time that the adjacent roadway improvements have been accepted for maintenance. Acceptance of landscaping may coincide with phased landscape improvements,

at the discretion of the City Engineer and dependent on the availability of maintenance funds.

**National Pollutant Discharge Elimination System (NPDES):**

89. Comply with all rules, regulations and procedures of the National Pollutant Discharge Elimination System (NPDES) for municipal, construction and industrial activities as promulgated by the California State Water Resources Control Board, the Regional Water Quality Control Board (Central Valley - Region IV), including the Stormwater C.3 requirements as detailed in the Guidebook available at [www.cccleanwater.org](http://www.cccleanwater.org).

Compliance shall include developing long-term best management practices (BMP's) for the reduction or elimination of storm water pollutants. The project design shall incorporate wherever feasible, the following long-term BMP's in accordance with the Contra Costa Clean Water Program for the site's storm water drainage:

- Offer pavers for household driveways and/or walkways as an option to buyers.
- Minimize the amount of directly connected impervious surface area.
- Delineate all storm drains with "No Dumping, Drains to the Delta" permanent metal markers per City standards.
- Construct concrete driveway weakened plane joints at angles to assist in directing run-off to landscaped/pervious areas prior to entering the street curb and gutter.
- Distribute public information items regarding the Clean Water Program to buyers.
- Other alternatives as approved by the City Engineer.

**Fees/Assessments:**

90. Comply with the requirements of the development impact fees listed below, in addition to those noticed by the City Council in Resolution 00-85 and 08-03. The applicant shall pay the fees in the amounts in effect at the time each building permit is issued.

- A. Traffic Impact Fee (authorized by Ordinance No. 14-00, adopted by Resolution 49-03);
- B. Regional Transportation Development Impact Mitigation Fee (authorized by Ordinance No. 14-00, adopted by Resolution No. 73-05);
- C. Park Land Dedication In-Lieu Fee (adopted by Ordinance No. 03-03);
- D. Park Impact Fee (authorized by Ordinance No. 05-00, adopted by Resolution No. 19-03);

- E. Public Facilities Fee (authorized by Ordinance No. 05-00, adopted by Resolution No. 18-03);
- F. Fire Facilities Impact Fee, collected by the City on behalf of the Oakley Fire Protection District;
- G. East Contra Costa County Habitat Conservation Plan Fee per the East Cypress HCP MOA.

The applicant should contact the City Engineer prior to constructing any public improvements to determine if any of the required improvements are eligible for credits or reimbursements against the applicable traffic benefit fees or from future developments.

- 91. The applicant shall be responsible for paying the County Recorder's fee for the Notice of Determination as well as the State Department of Fish and Game's filing fee.
- 92. Annex the property to the City of Oakley Landscape and Lighting District No. 1 for citywide landscaping and park maintenance, subject to an assessment for maintenance based on the assessment methodology described in the Engineer's Report. The assessment shall be the per parcel annual amount (with appropriate future cost of living adjustment) as established at the time of voting by the City Council. Any required election and/or ballot protest proceedings shall be completed prior to approval of the final map. The Applicant shall apply for annexation and provide all information and documents required by the City to process the annexation. All costs of annexation shall be paid by Applicant.
- 93. Annex the property to the City of Oakley Landscape and Lighting District No. 1 for citywide street lighting costs and maintenance, subject to an assessment for street light maintenance based on the assessment methodology described in the Engineer's Report. The assessment shall be the per parcel annual amount (with appropriate future cost of living adjustment) as established at the time of voting by the City Council. Any required election and/or ballot protest proceedings shall be completed prior to filing of the final map. The applicant shall apply for annexation and provide all information and documents required by the City to process the annexation. All costs of annexation shall be paid by Applicant.
- 94. Annex the property to the City of Oakley Landscape and Lighting District No. 1 for project specific landscaping maintenance, subject to an assessment for landscape operation and maintenance based on the assessment methodology described in the Engineer's Report. The assessment shall be the per parcel annual amount (with appropriate future cost of living adjustment) as established at the time of voting by the City Council. Any required election and/or ballot protest proceedings shall be completed prior to filing of the final map. The applicant shall apply for annexation and provide all information and documents

required by the City to process the annexation. All costs of annexation shall be paid by Applicant.

95. Participate in the formation of a mechanism to fund the additional police protection and park maintenance that will be required in the Cypress Corridor area. This annual assessment is pursuant to Section 4 of the Memorandum of Understanding between the City of Oakley and the Emerson, Gilbert and Burroughs Families dated September 23, 2002. The assessment shall initially be \$120 per parcel annually and shall include appropriate future cost of living adjustments for police services and park maintenance as established at the time of voting by the City Council. Any required election and/or ballot protest proceedings shall be completed prior to filing of the final map. The applicant shall apply for the formation and provide all information and documents required by the City. All costs shall be paid by Applicant.
96. Participate in the provision of funding to maintain police services by voting to approve a special tax for the parcels created by this subdivision approval. The tax shall be the per parcel annual amount (with appropriate future cost of living adjustment) as established at the time of voting by the City Council. The election to provide for the tax shall be completed prior to filing of the final map. Should the homes be occupied prior to the City receiving the first disbursement from the tax bill, the project proponent shall be responsible for paying the pro-rata share for the remainder of the tax year prior to the City conducting a final inspection.
97. Participate in the formation of a mechanism to fund the operation and maintenance of the storm drain system, including storm water quality monitoring and reporting, stormwater ponds and any proposed pump stations, as well as any levees proposed to be maintained by the City. The appropriate funding mechanism shall be determined by the City and may include, but not be limited to, an assessment district, community services district, or community facilities district. The funding mechanism shall be formed prior to filing of any final or parcel map, and the project proponent shall fund all costs of the formation.
98. Comply with any applicable storm drainage master plan and associated fees for drainage. The applicant shall pay any applicable fee in effect at the time of building permit issuance. Certain improvements required by the Conditions of Approval for this development or the Code may be eligible for credit or reimbursement against the drainage area fee. The developer should contact the City Engineer to personally determine the extent of any credit or reimbursement for which he might be eligible. Any credit or reimbursements shall be determined prior to filing the final map.



## ADVISORY NOTES

The following advisory notes are provided to the applicant as a courtesy but are not a part of the conditions of approval. Advisory notes are provided for the purpose of informing the applicant of additional ordinance requirements that must be met in order to proceed with development.

- A. The applicant/owner should be aware of the expiration dates and renewing requirements prior to requesting building or grading permits.
- B. The project will require a grading permit pursuant to the Ordinance Code.
- C. Applicant shall comply with the requirements of Ironhouse Sanitary District.
- D. The applicant shall comply with the requirements of the Diablo Water District.
- E. Comply with the requirements of the East Contra Costa Fire Protection District.
- F. Comply with the requirements of the Building Inspection Division. Building permits are required prior to the construction of most structures.
- G. This project may be subject to the requirements of the Department of Fish and Game. It is the applicant's responsibility to notify the Department of Fish and Game, P.O. Box 47, Yountville, California 94599, of any proposed construction within this development that may affect any fish and wildlife resources, per the Fish and Game Code.
- H. This project may be subject to the requirements of the Army Corps of Engineers. It is the applicant's responsibility to notify the appropriate district of the Corps of Engineers to determine if a permit is required, and if it can be obtained.
- I. The applicant shall obtain an encroachment permit for construction within existing City rights of way.
- J. The applicant shall obtain an encroachment permit from Caltrans for construction within the State right of way.

**PASSED AND ADOPTED** by the City Council at a meeting held on the 14<sup>th</sup> day of September 2010, by the following vote:

AYES: Anderson, Connelley, Frazier, Rios, Romick

NOES: None

ABSTENTIONS: None

ABSENT: None

APPROVED:

Pat Anderson  
Pat Anderson, Mayor

ATTEST:

Nancy Ortenblad 9/16/10  
Nancy Ortenblad, City Clerk      Date

**CITY OF OAKLEY  
SUBDIVISION IMPROVEMENT AGREEMENT  
SUBDIVISION 9350**

This agreement is made and entered into this \_\_\_\_ day of \_\_\_\_\_, 20\_\_\_\_ by and between the City of Oakley, a municipal corporation, hereinafter referred to as "CITY", and Brookfield Emerson Land LLC, A Delaware Limited Liability Company hereinafter referred to as "DEVELOPER".

RECITALS

**WHEREAS**, it has been determined by the City Council of the City of Oakley, State of California, that DEVELOPER completed the construction of those public improvements (hereafter "The Improvements") required by the conditions of approval related to the frontage improvements for the project as adopted by the City Council of the City of Oakley via Resolution Number 107-10, attached as Exhibit A, in accordance with the requirements and conditions set forth in approvals, the requirements of the Subdivision Map Act of the State of California, and those certain plans and specifications for said development approved by CITY and titled "Subdivision 9350 Emerson Ranch Neighborhood 4 (Neighborhood 4)" now on file in the office of the City Engineer, which are hereby referred to for a more definite and distinct description of the work to be performed under this Agreement as though set forth at length herein; and

**WHEREAS**, CITY intends to accept DEVELOPER's offer(s) of dedication of The Improvements in consideration for DEVELOPER's satisfactory performance of the terms and conditions of this Agreement:

NOW, THEREFORE, in consideration of the mutual promises, conditions and covenants herein contained, the parties agree as follows:

1. Improvements.

Concurrent with the execution of this Agreement, DEVELOPER shall furnish CITY with the following security in the form specified in Government Code sections 66499.1 and 66499.2 or in a form satisfactory to the CITY Attorney if different from said Government Code forms:

Subdivision Improvement bond in the amount of \$43,500

CITY shall be the sole indemnitee named on any instrument required by this Agreement. Any instrument or deposit required herein shall conform with the provisions of Chapter 5 of the Subdivision Map Act.

2. Estimated Cost of Improvements

The estimated cost of constructing The Improvements required by this

Agreement is agreed to be a total of \$435,000. Said amounts include costs and reasonable expenses and fees which may be incurred in enforcing the obligation secured.

3. Insurance Required.

Concurrent with the execution hereof, DEVELOPER shall obtain or cause to be obtained and filed with the CITY, all insurance required in Exhibit C, and such insurance shall have been approved by the Finance Director of CITY, or his designee, as to form, amount and carrier. Prior to the commencement of work under this Agreement, DEVELOPER's general contractor shall obtain or cause to be obtained and filed with the Finance Director, all insurance required under this paragraph, and such insurance shall have been approved by the Finance Director of CITY, as to form, amount and carrier. DEVELOPER shall not allow any contractor or subcontractor to commence work on this contract or subcontract until all insurance required for DEVELOPER and DEVELOPER's general contractor shall have been so obtained and approved. Said insurance shall be maintained in full force and effect until the completion of work under this Agreement and the final acceptance thereof by CITY. All requirements herein provided shall appear either in the body of the insurance policies or as endorsements and shall specifically bind the insurance carrier.

4. Work Performance and Guarantee.

Except as otherwise expressly provided in this Agreement, and excepting only items of routine maintenance, ordinary wear and tear and unusual abuse or neglect, DEVELOPER guarantees all work executed by DEVELOPER and/or DEVELOPER's agents, and all supplies, materials and devices of whatsoever nature incorporated in, or attached to the work, or otherwise delivered to CITY as a part of the work pursuant to the Agreement, to be free of all defects of workmanship and materials for a period of one (1) year after initial acceptance of the entire work by CITY. DEVELOPER shall repair or replace any or all such work or material, together with all or any other work or materials which may be displaced or damaged in so doing, that may prove defective in workmanship or material within said one-year guarantee period without expense or charge of any nature whatsoever to CITY. DEVELOPER further covenants and agrees that when defects in design, workmanship and materials actually appear during the one-year guarantee period, and have been corrected, the guarantee period shall automatically be extended for an additional year to insure that such defects have actually been corrected.

In the event the DEVELOPER shall fail to comply with the conditions of the foregoing guarantee within thirty (30) days time, after being notified of the defect in writing, CITY shall have the right, but shall not be obligated, to repair or obtain the repair of the defect, and DEVELOPER shall pay to CITY on demand all costs and expense of such repair. Notwithstanding anything herein to the contrary, in the event that any defect in workmanship or material covered by the foregoing guarantee results in a condition which constitutes an immediate hazard to the public health, safety, or welfare,

CITY shall have the right to immediately repair, or cause to be repaired, such defect, and DEVELOPER shall pay to CITY on demand all costs and expense of such repair. The foregoing statement relating to hazards to health and safety shall be deemed to include either temporary or permanent repairs which may be required as determined in the sole discretion and judgment of CITY.

If CITY, at its sole option, makes or causes to be made the necessary repairs or replacements or performs the necessary work, DEVELOPER shall pay, in addition to actual costs and expenses of such repair or work, fifty percent (50%) of such costs and expenses for overhead and interest at the maximum rate of interest permitted by law accruing thirty (30) days from the date of billing for such work or repairs.

5. Inspection of the Work.

DEVELOPER shall guarantee free access to CITY through its City Engineer and his designated representative for the safe and convenient inspection of the work throughout its construction. Said CITY representative shall have the authority to reject all materials and workmanship which are not in accordance with the plans and specifications, and all such materials and or work shall be removed promptly by DEVELOPER and replaced to the satisfaction of CITY without any expense to CITY in strict accordance with the improvement plans and specifications.

6. Agreement Assignment.

This Agreement shall not be assigned by DEVELOPER without the written consent of CITY.

All notices herein required shall be in writing, and delivered in person or sent by registered mail, postage prepaid.

Notices required to be given to CITY shall be addressed as follows:

City Manager and City Engineer  
City of Oakley  
3231 Main Street  
Oakley, CA 94561

Notices required to be given to DEVELOPER shall be addressed as follows:

Brookfield Emerson Land LLC,  
A Delaware Limited Liability Company  
500 La Gonda Way, Suite 100  
Danville, CA 94526  
Attn: Josh Roden

Notices required to be given surety of DEVELOPER shall be addressed as follows:

Any party or the surety may change such address by notice in writing to the other party and thereafter notices shall be addressed and transmitted to the new address.

Concurrent with the execution of this Agreement, DEVELOPER has executed and has caused to be acknowledged an abstract of this Agreement. DEVELOPER agrees CITY may record said abstract in the Official Records of Contra Costa County.

7. Use of Streets or Improvements.

At all times prior to the final acceptance of the work by CITY, the use of any or all streets and improvements within the work to be performed under this Agreement shall be at the sole and exclusive risk of DEVELOPER. The issuance of any building or occupancy permit by CITY for dwellings located within the tract shall not be construed in any manner to constitute a partial or final acceptance or approval of any or all such improvements by CITY. DEVELOPER agrees that CITY's Building Official may withhold the issuance of building or occupancy permits when the work or its progress may substantially and/or detrimentally affect public health and safety.

8. Safety Devices.

DEVELOPER shall provide and maintain such guards, watchmen, fences, barriers, regulatory signs, warning lights, and other safety devices adjacent to and on the tract site as may be necessary to prevent accidents to the public and damage to the property. DEVELOPER shall furnish, place, and maintain such lights as may be necessary for illuminating the said fences, barriers, signs, and other safety devices. At the end of all work to be performed under this Agreement, all fences, barriers, regulatory signs, warning lights, and other safety devices (except such safety items as may be shown on the plans and included in the items of work) shall be removed from site of the work by the DEVELOPER, and the entire site left clean and orderly.

9. Acceptance of Work.

Upon notice of the completion of the work covered by this agreement and the delivery of a set of final as-built plans to CITY by DEVELOPER, CITY, through its City Engineer or his designated representative, shall examine the work without delay, and, if found to be in accordance with said plans and specifications and this Agreement, shall

recommend acceptance of the work to the City Council and, upon such acceptance, shall notify DEVELOPER or his designated agents of such acceptance. CITY reserves the right to not accept the work until all construction activities, including those related to building construction, within the project boundaries has been completed.

10. Patent and Copyright Costs.

In the event that said plans and specifications require the use of any material, process or publication which is subject to a duly registered patent or copyright, DEVELOPER shall be liable for, and shall indemnify CITY from any fees, costs or litigation expenses, including attorneys' fees and court costs, which may result from the use of said patented or copyrighted material, process or publication.

11. Liability.

- a. DEVELOPER Primarily Liable. DEVELOPER hereby warrants that the design and construction of The Improvements will not adversely affect any portion of adjacent properties and that all work will be performed in a proper manner. DEVELOPER agrees to indemnify, defend, release, and hold harmless CITY, and each of its elective and appointive boards, commissions, officers agents and employees, from and against any and all loss, claims, suits, liabilities, actions, damages, or causes of action of every kind, nature and description, directly or indirectly arising from an act or omission of DEVELOPER, its employees, agents, or independent contractors in connection with DEVELOPER'S actions and obligations hereunder; provided as follows:
1. That CITY does not, and shall not, waive any rights against DEVELOPER which it may have by reason of the aforesaid hold harmless agreement, because of the acceptance by CITY, or the deposit with CITY by DEVELOPER, of any of the insurance policies described in Paragraph 4 hereof.
  2. That the aforesaid hold harmless agreement by DEVELOPER shall apply to all damages and claims for damages of every kind suffered, or alleged to have been suffered, by reason of any of the aforesaid operations referred to in this paragraph, regardless of whether or not CITY has prepared, supplied, or approved of plans and/or specifications for the subdivision, or regardless of whether or not such insurance policies shall have been determined to be applicable to any of such damages or claims for damages.

- b. Design Defect. If, in the opinion of the CITY, a design defect in the work of improvement becomes apparent during the course of construction, or within one (1) year following acceptance by the CITY of the improvements, and said design defect, in the opinion of the CITY, may substantially impair the public health and safety, DEVELOPER shall, upon order by the CITY, correct said design defect at his sole cost and expense, and the sureties under the Faithful Performance and Labor and Materials Bonds shall be liable to the CITY for the corrective work required.
  
- c. Litigation Expenses. In the event that legal action is instituted by either party to this Agreement, and said action seeks damages for breach of this Agreement or seeks to specifically enforce the terms of this Agreement, and, in the event judgment is entered in said action, the prevailing party shall be entitled to recover its attorneys' fees and court costs. If CITY is the prevailing party, CITY shall also be entitled to recover its attorney's fees and costs in any action against DEVELOPER's surety on the bonds provided under paragraph 3.

12. Recitals.

The foregoing Recitals are true and correct and are made a part hereof.

**IN WITNESS WHEREOF**, the parties hereto have executed this Agreement in duplicate at Oakley, California, the day and year first above written.

**CITY OF OAKLEY**

**DEVELOPER**

By: \_\_\_\_\_  
 Bryan H. Montgomery  
 City Manager

\_\_\_\_\_

**APPROVED AS TO FORM:**

\_\_\_\_\_  
 Derek P. Cole  
 City Attorney



**ATTEST:**

\_\_\_\_\_  
Libby Vreonis, City Clerk

- Exhibits:     Exhibit A – City of Oakley, City Council, Resolution 107-10  
                  Exhibit B – Insurance Requirements  
                  Exhibit C - Verification of Required Insurance

**EXHIBIT A**  
**(RESOLUTION 107-10)**

## EXHIBIT B

### INSURANCE REQUIREMENTS

#### CONSTRUCTION CONTRACTS

##### MINIMUM SCOPE AND LIMIT OF INSURANCE

Coverage shall be at least as broad as:

1. **Commercial General Liability (CGL):** Insurance Services Office Form CG 00 01 covering CGL on an "occurrence" basis, including products and completed operations, property damage, bodily injury and personal & advertising injury with limits no less than **\$5,000,000** per occurrence. If a general aggregate limit applies, either the general aggregate limit shall apply separately to this project/location or the general aggregate limit shall be twice the required occurrence limit (i.e., \$10,000,000)
2. **Automobile Liability:** Insurance Services Office Form Number CA 0001 covering Code 1 (any auto), with limits no less than **\$5,000,000** per accident for bodily injury and property damage.
3. **Workers' Compensation** insurance as required by the State of California, with Statutory Limits, and Employers' Liability insurance with a limit of no less than \$1,000,000 per accident for bodily injury or disease.
4. **Builder's Risk (Course of Construction)** insurance utilizing an "All Risk" (Special Perils) coverage form, with limits equal to the completed value of the project and no coinsurance penalty provisions.
5. **Surety Bonds** as described below.
6. **Professional Liability** (if Design/Build), with limits no less than \$1,000,000 per occurrence or claim, and \$2,000,000 policy aggregate.
7. **Contractors' Pollution Legal Liability** and/or Asbestos Legal Liability and/or Errors and Omissions (if project involves environmental hazards) with limits no less than \$1,000,000 per occurrence or claim, and \$2,000,000 policy aggregate.

If the contractor maintains higher limits than the minimums shown above, the City requires and shall be entitled to coverage for the higher limits maintained by the contractor. Any available insurance proceeds in excess of the specified minimum limits of insurance and coverage shall be available to the City.

Contractor shall procure and maintain for the duration of the contract, and if Contractor has a claims-made policy, Contractor shall maintain for two years thereafter, insurance against claims for injuries to persons or damages to property which may arise from or in connection with the performance of the work hereunder by the Contractor, its agents, representatives, employees or subcontractors.

##### ***Deductibles and Self-Insured Retentions***

Any deductibles or self-insured retentions must be declared to and approved by the City. At the option of the City, either: the contractor shall cause the insurer to reduce or eliminate such deductibles or self-insured retentions as respects the City, its officers, officials, employees, and volunteers; or the Contractor shall provide a financial guarantee satisfactory to the City guaranteeing payment of losses and related investigations, claim administration, and defense expenses.

##### ***Other Insurance Provisions***

The insurance policies are to contain, or be endorsed to contain, the following provisions:

1. **The City, its officers, officials, employees, and volunteers are to be covered as additional insureds** on the CGL policy with respect to liability arising out of work or operations performed by or on behalf of the Contractor including materials, parts, or equipment furnished in connection with such work or operations and automobiles owned, leased, hired, or borrowed by or on behalf of the Contractor. General liability coverage can be provided in the form of an endorsement to the Contractor's insurance (at least as broad as ISO Form CG 20 10 11 85 or both CG 20 10 10 01 and CG 20 37 10 01 forms if later revisions used).
2. For any claims related to this project, the **Contractor's insurance coverage shall be primary** insurance as respects the City, its officers, officials, employees, and volunteers. Any insurance or self-insurance maintained by the City, its officers, officials, employees, or volunteers shall be in excess of the Contractor's insurance and shall not contribute with it.
3. Each insurance policy required by this clause shall provide notice will be provided to City in the event that the policy is terminated. Contractor shall immediately notify City of any insurance cancellation or termination and shall provide replacement insurance policy documentation to the City.

#### ***Builder's Risk (Course of Construction) Insurance***

Contractor may submit evidence of Builder's Risk insurance in the form of Course of Construction coverage. Such coverage shall **name the City as a loss payee** as their interest may appear.

If the project does not involve new or major reconstruction, at the option of the City, an Installation Floater may be acceptable. For such projects, a Property Installation Floater shall be obtained that provides for the improvement, remodel, modification, alteration, conversion or adjustment to existing buildings, structures, processes, machinery and equipment. The Property Installation Floater shall provide property damage coverage for any building, structure, machinery or equipment damaged, impaired, broken, or destroyed during the performance of the Work, including during transit, installation, and testing at the City's site.

#### ***Claims Made Policies***

If any coverage required is written on a claims-made coverage form:

1. The retroactive date must be shown, and this date must be before the execution date of the contract or the beginning of contract work.
2. Insurance must be maintained and evidence of insurance must be provided for at least five (5) years after completion of contract work.
3. If coverage is canceled or non-renewed, and not replaced with another claims-made policy form with a retroactive date prior to the contract effective, or start of work date, the Contractor must purchase extended reporting period coverage for a minimum of five (5) years after completion of contract work.
4. A copy of the claims reporting requirements must be submitted to the City for review.
5. If the services involve lead-based paint or asbestos identification/remediation, the Contractors Pollution Liability policy shall not contain lead-based paint or asbestos exclusions. If the services involve mold identification/remediation, the Contractors Pollution Liability policy shall not contain a mod exclusion, and the definition of Pollution shall include microbial matter, including mold.

#### ***Acceptability of Insurers***

Insurance is to be placed with insurers with a current A.M. Best rating of no less than A:VII, unless otherwise acceptable to the City.

#### ***Waiver of Subrogation***

**Contractor hereby agrees to waive rights of subrogation which any insurer of Contractor may acquire** from Contractor by virtue of the payment of any loss. Contractor agrees to obtain any endorsement that may be necessary to affect this waiver of subrogation. **Worker's Compensation policies shall be endorsed with a waiver of subrogation** in favor of the City for all work performed by the Contractor, its employees, agents and subcontractors.

#### ***Verification of Coverage***

Contractor shall furnish the City with original certificates and amendatory endorsements, or copies of the applicable insurance language, effecting coverage required by this contract. All certificates and endorsements are to be received and approved by the City before work commences. However, failure to obtain the required documents prior to the work beginning shall not waive the Contractor's obligation to provide them. The City reserves the right to require complete, certified copies of all required insurance policies, including endorsements, required by these specifications, at any time.

#### ***Subcontractors***

Contractor shall require and verify that all subcontractors maintain insurance meeting all the requirements stated herein, and Contractor shall ensure that City is an additional insured on insurance required from subcontractors. For CGL coverage subcontractors shall provide coverage with a format least as broad as CG 20 10 10 01 and CG 20 37 10 01.

#### ***Surety Bonds***

Contractor shall provide the following Surety Bonds:

1. Bid bond
2. Performance bond
3. Payment bond
4. Maintenance bond

The Payment Bond and the Performance Bond shall be in a sum equal to the contract price. If the Performance Bond provides for a one-year warranty a separate Maintenance Bond is not necessary. If the warranty period specified in the contract is for longer than one year a Maintenance Bond equal to 10% of the contract price is required. Bonds shall be duly executed by a responsible corporate surety, authorized to issue such bonds in the State of California and secured through an authorized agent with an office in California.

#### ***Special Risks or Circumstances***

City reserves right to modify these requirements, including limits, based on the nature of the risk, prior experience, insurer, coverage, or other circumstances.

**EXHIBIT C**  
**VERIFICATION OF INSURANCE**

RESOLUTION NO. XX-16

**A RESOLUTION OF THE CITY COUNCIL OF THE CITY OF OAKLEY APPROVING THE SUBDIVISION IMPROVEMENT AGREEMENT WITH BROOKFIELD EMERSON LAND LLC, A DELAWARE LIMITED LIABILITY COMPANY, FOR SUBDIVISION 9350 EMERSON RANCH NEIGHBORHOOD 4 AND AUTHORIZING THE CITY MANAGER TO SIGN THE AGREEMENT**

WHEREAS, the City Council of the City of Oakley, California, wishes to enter into a Subdivision Improvement Agreement with Brookfield Emerson Land LLC, a Delaware Limited Liability Company (DEVELOPER) for the development of a residential subdivision known as Subdivision 9350 Emerson Ranch Neighborhood 4; and

WHEREAS, DEVELOPER has completed construction of the public improvements in accordance with the project conditions of approval and City standard construction design; and

WHEREAS, the estimated cost of the improvements is \$435,000 for the public improvements; and

WHEREAS, DEVELOPER has submitted to City a Subdivision Improvement Bond in the amount of \$43,500 as surety in the event any deficiencies are discovered in the future before the subdivision is accepted by City.

NOW, THEREFORE, BE IT RESOLVED by the City Council of the City of Oakley that the Subdivision Improvement Agreement with Brookfield Emerson Land LLC, a Delaware Limited Liability Company is hereby approved and the City Manager is hereby authorized to execute the Subdivision Improvement Agreement for the development of Subdivision 9350 Emerson Ranch Neighborhood 4 in the form attached hereto as **Exhibit A** and is made part of this resolution.

**PASSED AND ADOPTED** by the City Council of the City of Oakley, California, this 11<sup>th</sup> day of October, 2016 by the following vote:

AYES:

NOES:

ABSTENTIONS:

ABSENT:

APPROVED:

\_\_\_\_\_  
Kevin Romick, Mayor

ATTEST:

\_\_\_\_\_  
Libby Vreonis, City Clerk

\_\_\_\_\_  
Date



**RESOLUTION NO. XX-16**

**A RESOLUTION OF THE CITY COUNCIL OF THE CITY OF OAKLEY  
APPROVING THE FINAL MAP OF SUBDIVISION 9350 EMERSON RANCH  
NEIGHBORHOOD 4**

WHEREAS, Brookfield Emerson Land LLC, a Delaware Limited Liability Company, has satisfied the necessary conditions of approval for Subdivision 9350, as approved by the City Council on September 14, 2010 by Resolution Number 107-10; and

WHEREAS, the City Engineer has determined that the conditions of approval for the project have been satisfied; and

WHEREAS, the City Surveyor has determined that the final map is technically correct.

NOW, THEREFORE, BE IT RESOLVED by the City Council of the City of Oakley that the final map labeled "Subdivision 9350 Emerson Ranch Neighborhood 4", as prepared by Carlson, Barbee & Gibson, Inc. be approved.

**PASSED AND ADOPTED** by the City Council of the City of Oakley, California, this 11th day of October, 2016 by the following vote:

AYES:

NOES:

ABSTENTIONS:

ABSENT:

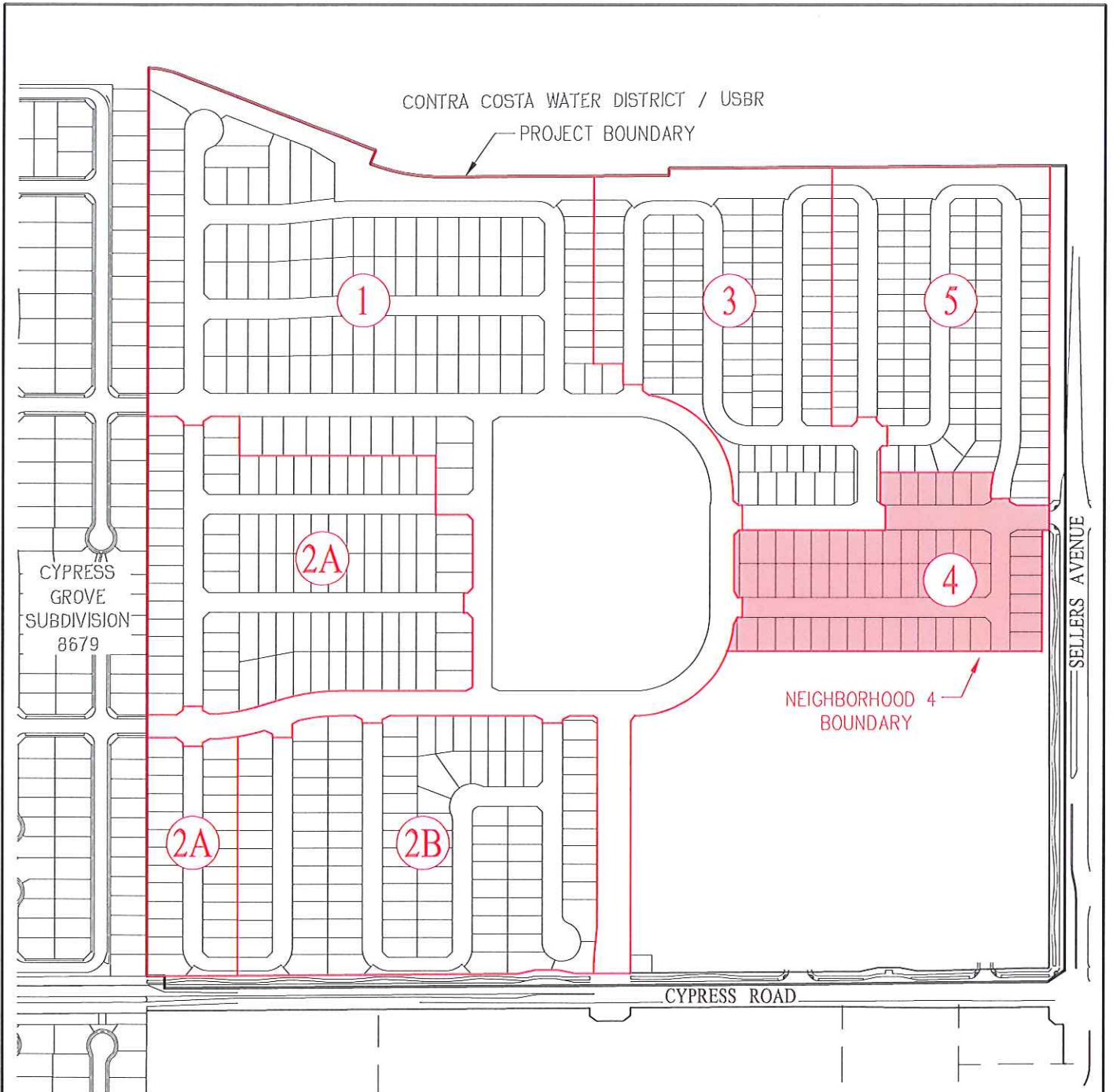
APPROVED:

\_\_\_\_\_  
Kevin Romick, Mayor

ATTEST:

\_\_\_\_\_  
Libby Vreonis, City Clerk

\_\_\_\_\_  
Date

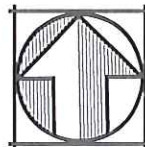


EMERSON RANCH  
**NEIGHBORHOOD 4**  
 SUBDIVISION 9350

CITY OF OAKLEY CONTRA COSTA COUNTY CALIFORNIA

DATE: SEPTEMBER 30, 2016

SCALE: 1" = 400'



	<b>Carlson, Barbee &amp; Gibson, Inc.</b> CIVIL ENGINEERS • SURVEYORS • PLANNERS
	<small>6111 BOLLINGER CANYON ROAD, SUITE 150          SAN RAMON, CALIFORNIA 94583</small>

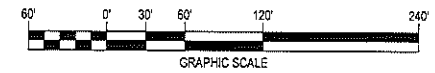
**SUBDIVISION NO. 9350  
EMERSON RANCH  
NEIGHBORHOOD 4**

CONSISTING OF 7 SHEETS  
BEING A SUBDIVISION OF PARCEL E OF SUBDIVISION 9032,  
RECORDED IN BOOK 523 OF MAPS, AT PAGE 44,  
CONTRA COSTA COUNTY RECORDS  
CITY OF OAKLEY, CONTRA COSTA COUNTY, CALIFORNIA.

**Carlson, Barbee & Gibson, Inc.**

CIVIL ENGINEERS • SURVEYORS • PLANNERS  
SAN RAMON, CALIFORNIA

SCALE: 1" = 80' SEPTEMBER 2015

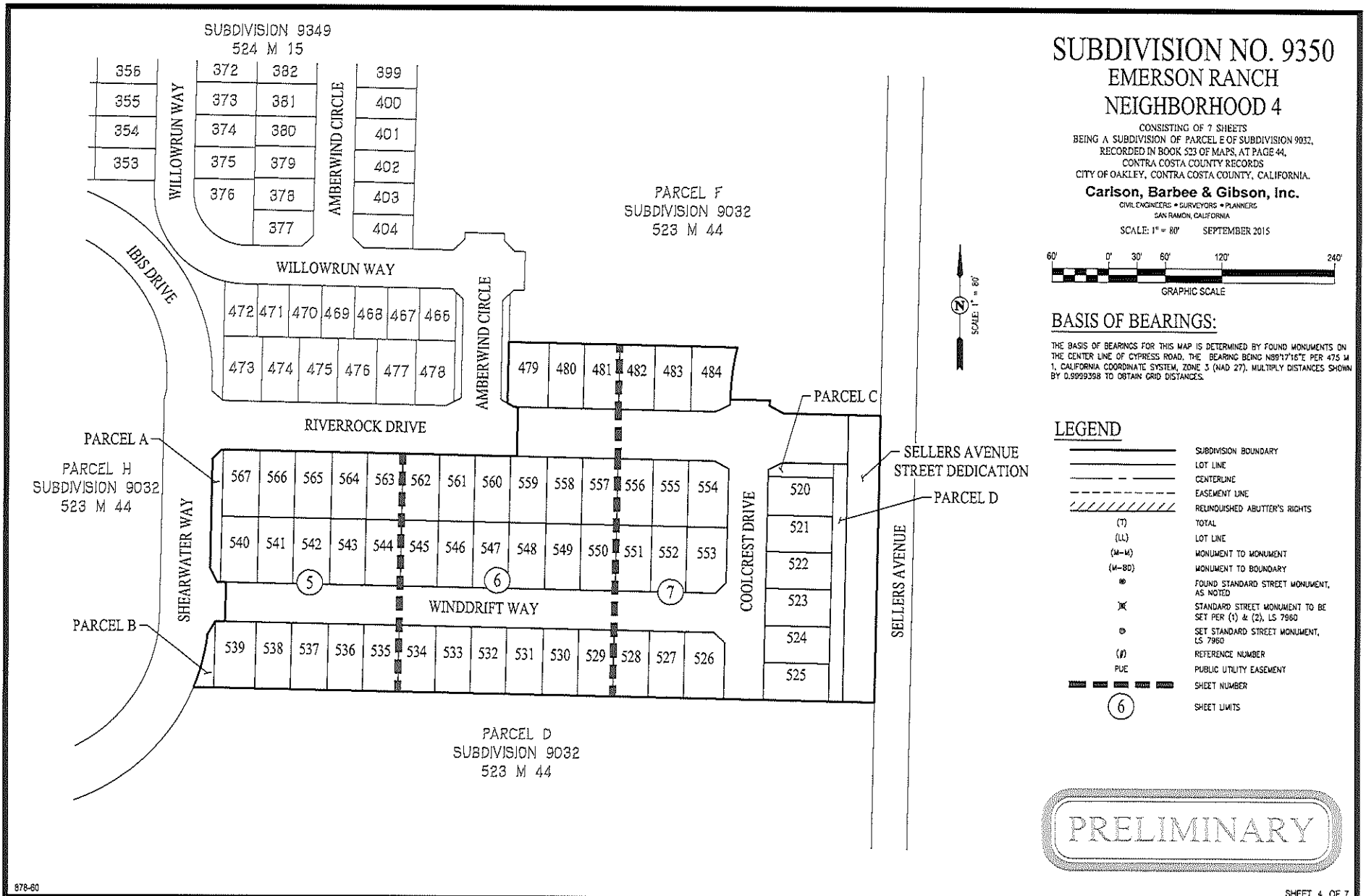


**BASIS OF BEARINGS:**

THE BASIS OF BEARINGS FOR THIS MAP IS DETERMINED BY FOUND MONUMENTS ON THE CENTER LINE OF CYPRESS ROAD, THE BEARING BEING N89°17'16"E PER 475 M 1, CALIFORNIA COORDINATE SYSTEM, ZONE 3 (NAD 27), MULTIPLY DISTANCES SHOWN BY 0.9999358 TO OBTAIN GRID DISTANCES.

**LEGEND**

- SUBDIVISION BOUNDARY
- LOT LINE
- CENTERLINE
- EASEMENT LINE
- RELINQUISHED ABUTTER'S RIGHTS
- TOTAL
- LOT LINE
- MONUMENT TO MONUMENT
- MONUMENT TO BOUNDARY
- FOUND STANDARD STREET MONUMENT, AS NOTED
- STANDARD STREET MONUMENT TO BE SET PER (1) & (2), LS 7960
- SET STANDARD STREET MONUMENT, LS 7960
- REFERENCE NUMBER
- PUBLIC UTILITY EASEMENT
- SHEET NUMBER
- SHEET LIMITS



**PRELIMINARY**