

PROJECT DATA

APN: 035-510-002

ACREAGE:
 EXISTING PARCEL BEFORE BOUNDARY LINE ADJUSTMENT: 1.97 AC (85,908 S.F.)
 PROPOSED PARCEL AFTER BOUNDARY LINE ADJUSTMENT: 1.28 AC (55,790 S.F.)

APN: 035-510-002

CONVENIENCE STORE SQUARE FOOTAGE: 3,819 S.F.

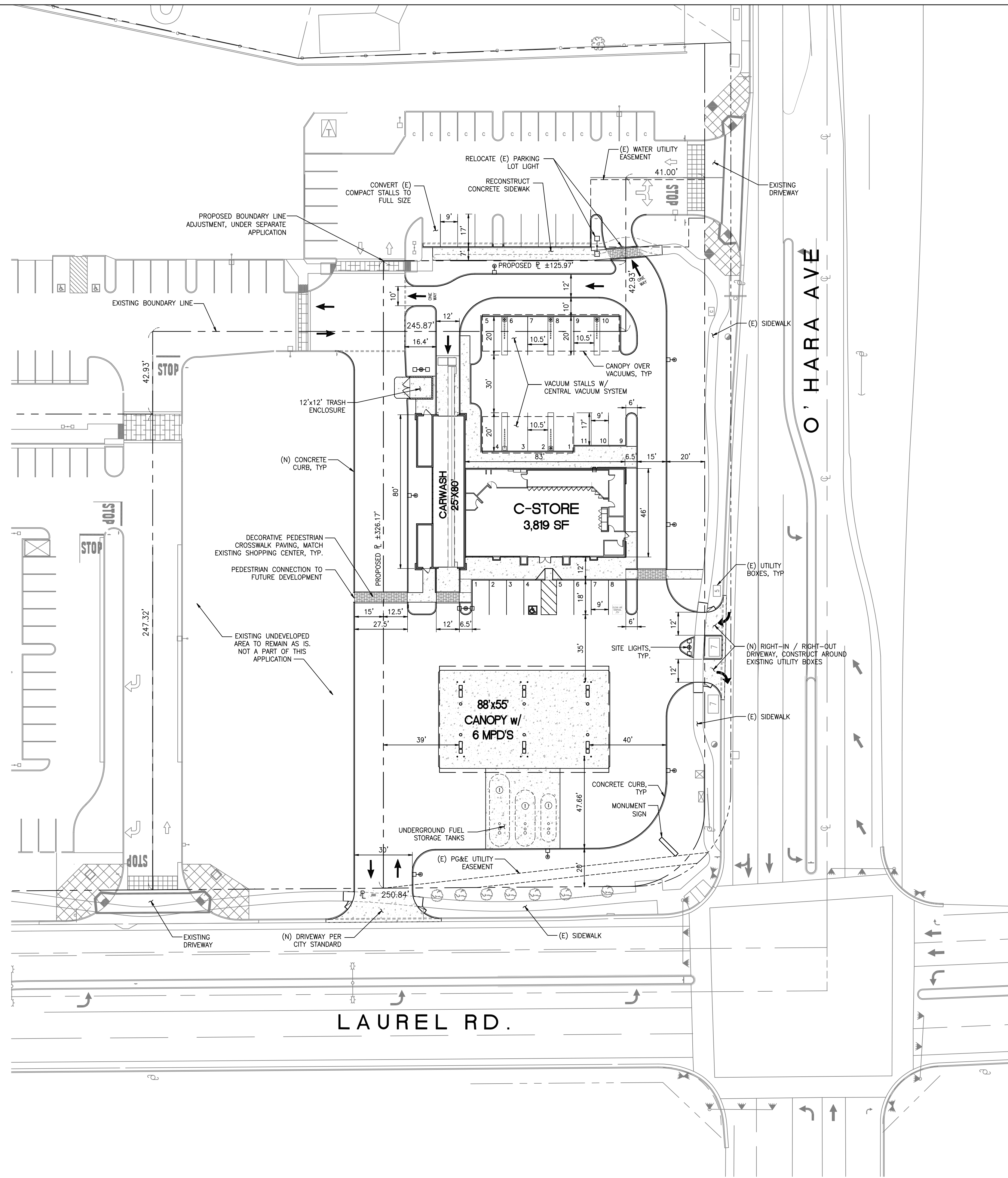
CARWASH SQUARE FOOTAGE: 4,759 S.F.

FUELING CANOPY SQUARE FOOTAGE: 4,840 S.F.

SITE DENSITY: 13,418 / 55,790 = 24%

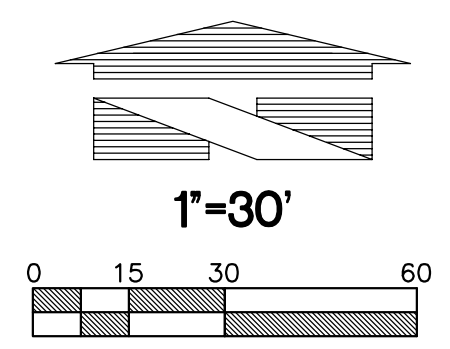
LANDSCAPE AREA: 11,983 S.F.

LANDSCAPE COVERAGE: 11,983 / 55,790 = 21.5%



PRELIMINARY SITE PLAN

NOTE:
 ALL IMPROVEMENTS SHOWN
 SHADED ARE EXISTING TO REMAIN
 UNLESS NOTED OTHERWISE



No.	Date	By	Chd.	Appr.	Revision

Title:

PRELIMINARY SITE PLAN
 NW CORNER LAUREL RD + OHARA AVE.
 OAKLEY, CA 94961

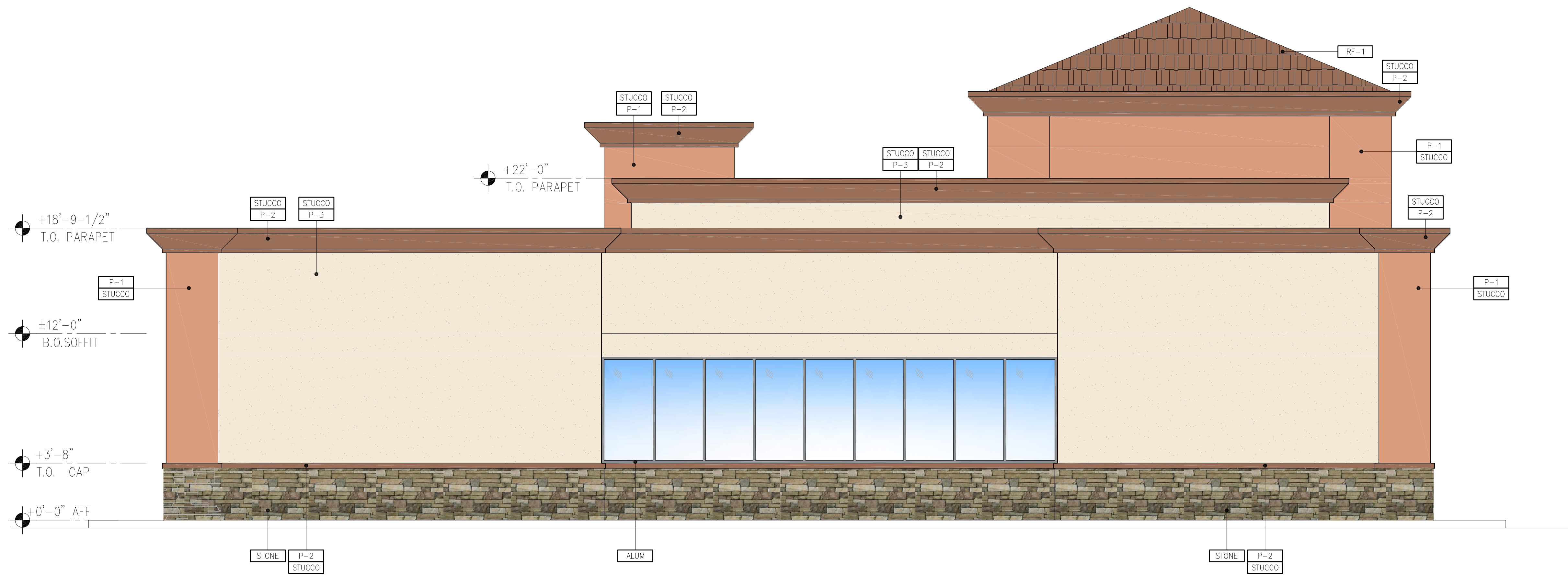
For: **KEYLOCK ENTERPRISES**
 1995 OAK PARK BLVD.
 PLEASANT HILL, CA 94523

Scale:	Horizontal	Vertical
	1:30	
DC	SK	
Designed	Drawn	Checked
Approved	Approved	Date
		02/08/17

18215 72ND AVENUE SOUTH
 KENT, WA 98032
 (425)251-6222
 (425)251-8782 FAX
 CIVIL ENGINEERING, LAND-PLANNING,
 SURVEYING, ENVIRONMENTAL SERVICES



Job Number: **18230**
 Sheet: **PS-1** of



EAST ELEVATION

- GENERAL NOTES**
 A. REVEAL LOCATIONS IN FINISH SYSTEM SHOWN ARE TO ALIGN AS CLOSELY AS POSSIBLE TO ELEVATIONS.
- COLOR LEGEND**
- P-1 DRYVIT COLOR 116 "VICTORIAN LACE"
 - P-2 DRYVIT COLOR 142 "SPRETRUM BROWN"
 - P-3 SHERWIN WILLIAMS COLOR 7557 "SUMMER WHITE"
 - P-4 EXTRA MILE COLOR SPEC "CHILLED WINE"
- MATERIAL LEGEND**
- STUCCO 3/8" CEMENT PLASTER, INSTALLED PER MFG. SPECIFICATIONS; TEXTURE: FINE SAND FINISH
 - S-FLEX STUC-O-FLEX ELASTOMERIC ACRYLIC FINISH OVER CEMENT PLASTER, INSTALLED PER MFG. SPECIFICATIONS; TEXTURE: FINE SAND FINISH
 - ALUM CLEAR ANODIZED ALUMINUM
 - RF-1 CONCRETE TILE ROOFING; MFG: BORAL; STYLE: BARCELONA 900 SERIES; COLOR: "APPLE BARK"
 - STONE MANUFACTURED STONE VENEER; MFG: BORAL; PRODUCT: COUNTRY LEDGER STONE; COLOR: MOJAVE



NORTH ELEVATION

Revision

No. Date By Ckd. Appr.

Title:

PRELIMINARY EXT ELEVATIONS
 NW CORNER LAUREL RD + OHARA AVE.
 OAKLEY, CA 94961

For: KEYLOCK ENTERPRISES
 1995 OAK PARK BLVD.
 PLEASANT HILL, CA 94523

For:

Scale: Horizontal 1/4"=1'-0" Vertical

DC: Designed SK: Drawn
 Checked Approved Date 02/13/17

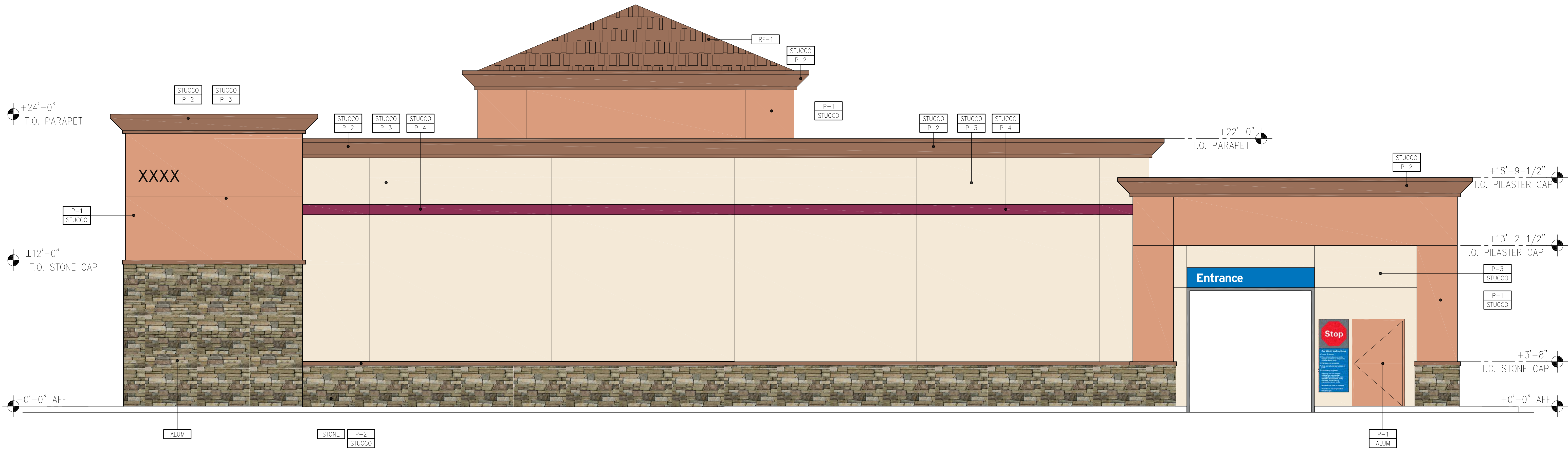
18215 72ND AVENUE SOUTH
 KENT, WA 98032
 (425)251-6222
 (425)251-8782 FAX
 CIVIL ENGINEERING, LAND PLANNING,
 SURVEYING, ENVIRONMENTAL SERVICES



Job Number 18230
 Sheet A2.1 of



WEST ELEVATION



SOUTH ELEVATION

No.	Date	By	Chd.	Appr.	Revision

Title:

PRELIMINARY EXT ELEVATIONS
 NW CORNER LAUREL RD + OHARA AVE.
 OAKLEY, CA 94961

For:

KEYLOCK ENTERPRISES
 1995 OAK PARK BLVD.
 PLEASANT HILL, CA 94523

Scale:

Horizontal 1/4"=1'-0"
 Vertical

Designed
 Drawn
 Checked
 Approved
 Date

SK
 02/13/17

18215 72ND AVENUE SOUTH
 KENT, WA 98032
 (425)251-6222
 (425)251-8782 FAX

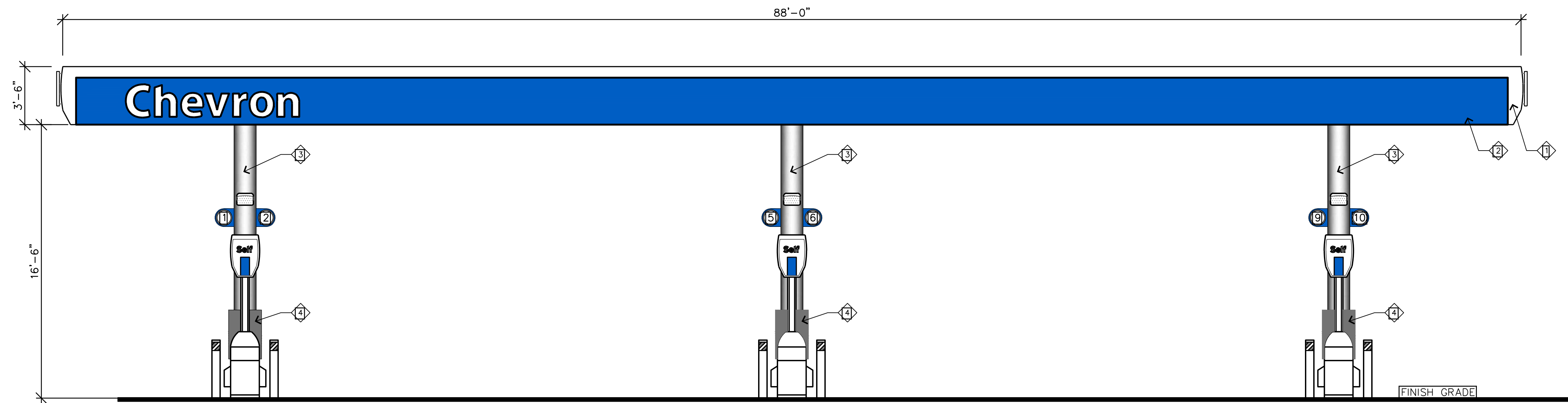
CIVIL ENGINEERING, LAND PLANNING,
 SURVEYING, ENVIRONMENTAL SERVICES



Job Number
 18230

Sheet
 A2.2

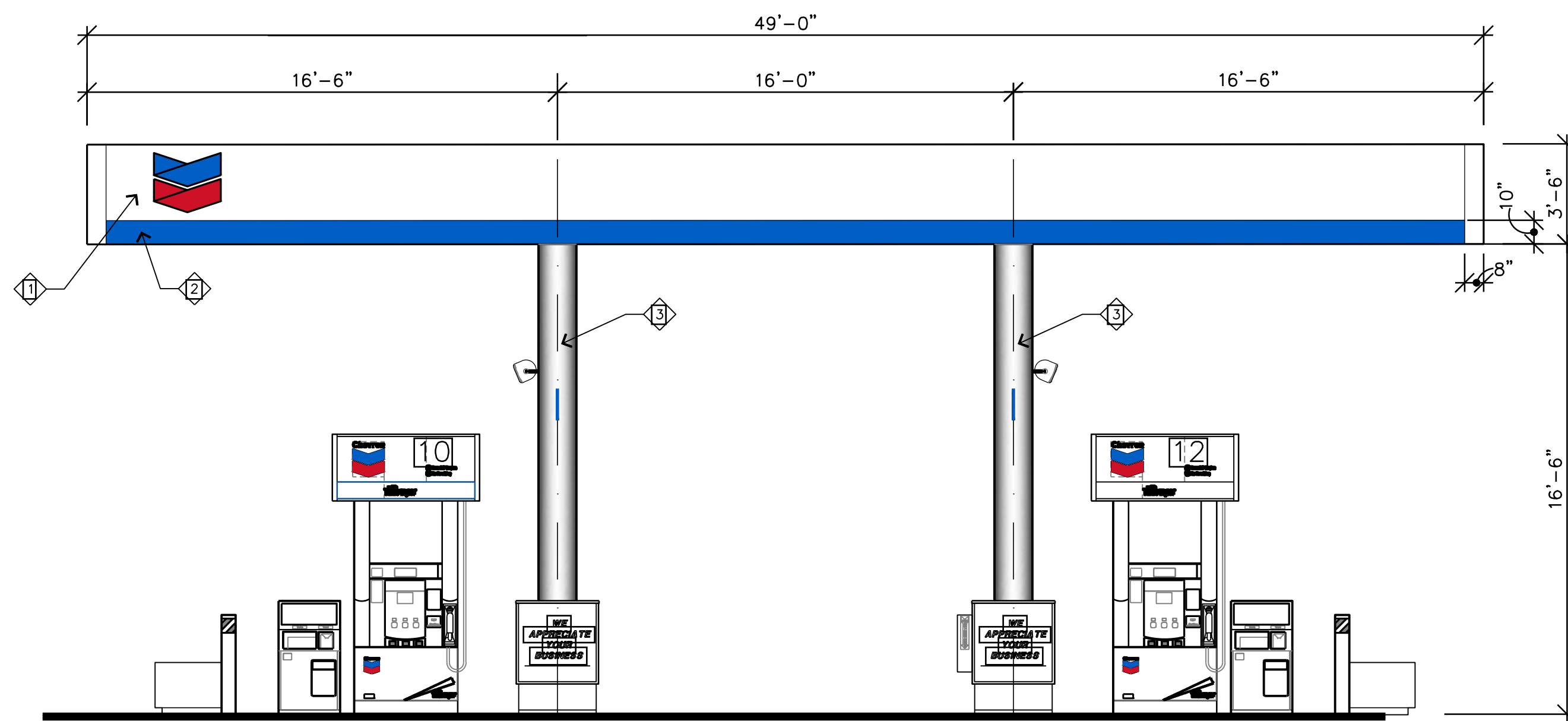
of



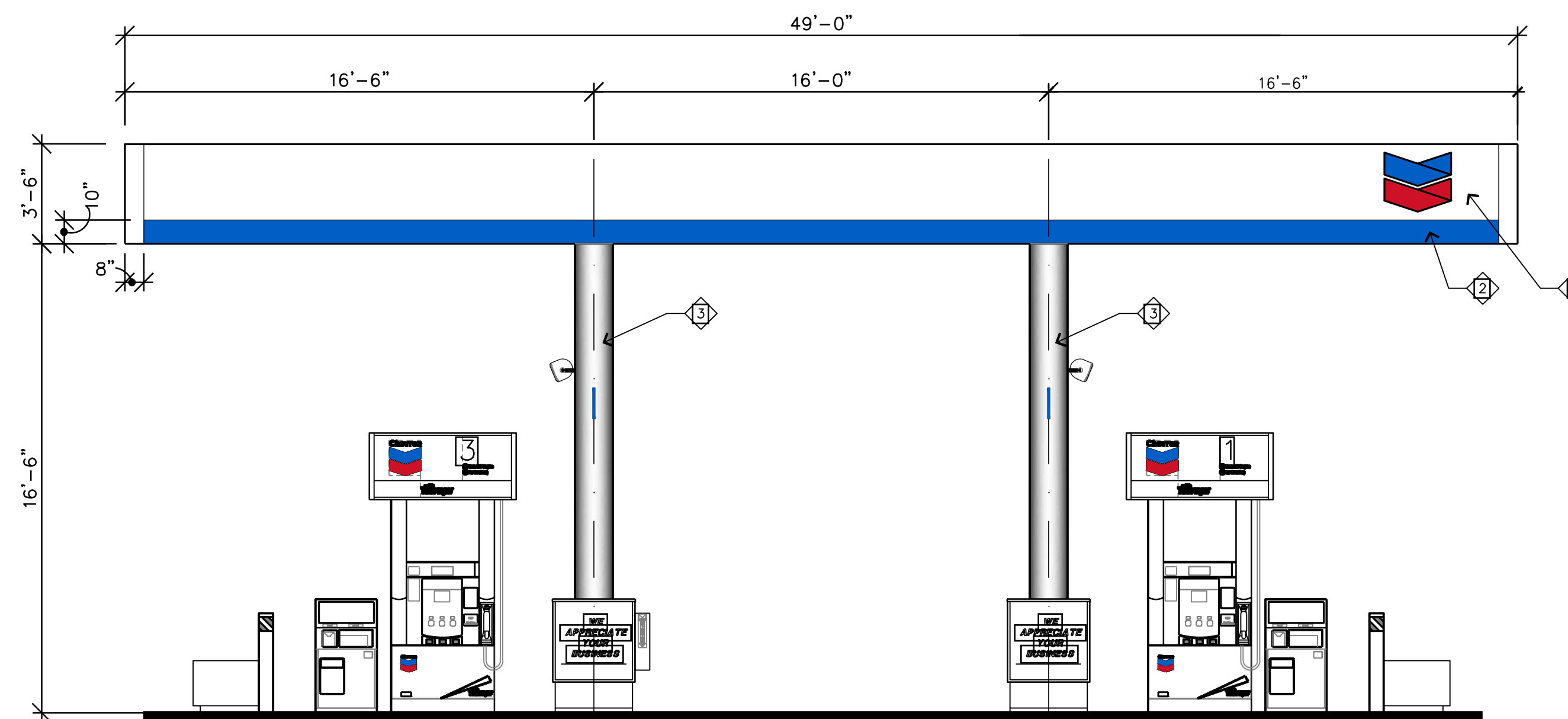
A WEST CANOPY ELEVATION
SCALE: 1/4" = 1'-0"

COLOR LEGEND		
COLOR	PMS MATCH	FILM (VINYL)
1 CVX WHITE (WH-835-S)	WHITE	ARLON WHITE #2
2 RETAIL OUTDOOR BLUE	PMS 293	N/A
3 CVX LIGHT GRAY (GY-450)	PMS 428	ARLON CUSTOM
4 CVX DARK GRAY (GY-210)	PMS 433	ARLON CUSTOM
5 CHEVRON RED	PMS 186	ARLON RED
6 DECK WHITE	DECK WHITE	N/A
7 CVX SILVER FLAKE	PMS 877	ARLON CUSTOM

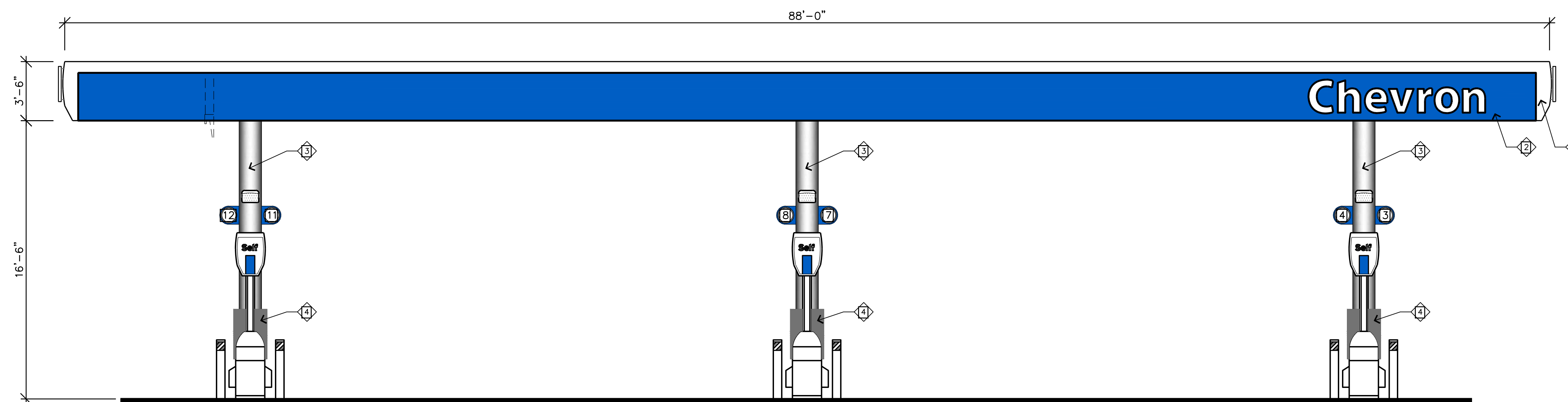
ALL PAINT TO BE V.O.C. COMPLIANT URETHANE



B NORTH CANOPY ELEVATION
SCALE: 1/4" = 1'-0"



C SOUTH CANOPY ELEVATION
SCALE: 1/4" = 1'-0"



D EAST CANOPY ELEVATION
SCALE: 1/4" = 1'-0"

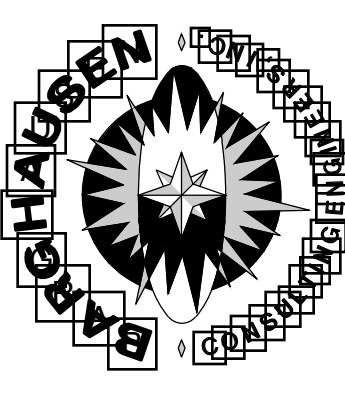
NO. DIM. DATE 1/20/11

PRELIMINARY EXTERIOR ELEVATIONS
NW CORNER LAUREL BLVD & OFARA AVE
OAKLAND, CA 94612

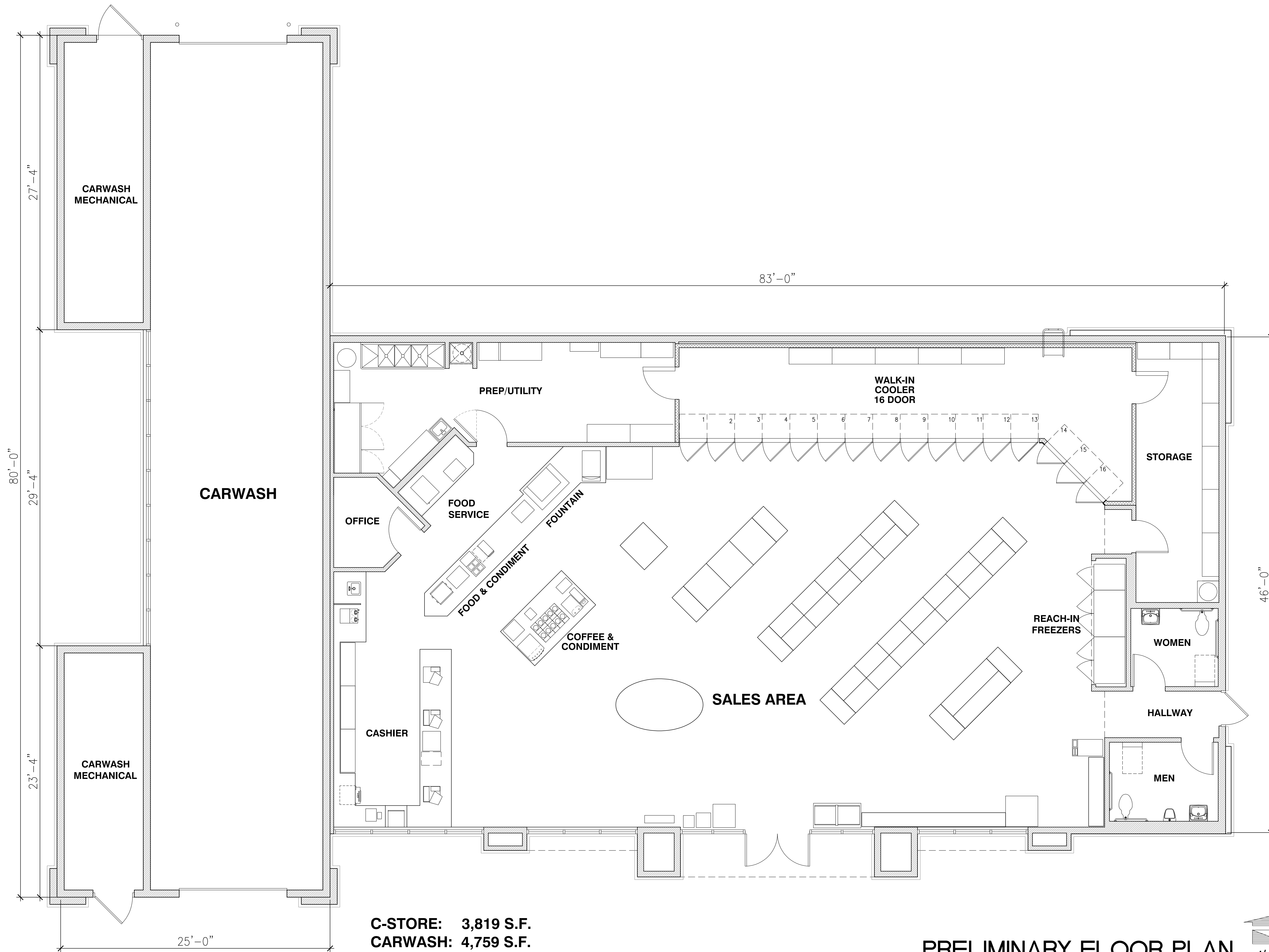
KEY LOCK ENTERPRISES
1995 GARFIELD BLVD.
PLEASANT HILLS, CA 94523

SCALE: 1/4" = 1'-0"
DATE: 07/13/11

100% COMPLETE SOUTH
KEY LOCK ENTERPRISES
1995 GARFIELD BLVD.
PLEASANT HILLS, CA 94523
CUSTOMER: KEY LOCK ENTERPRISES
SCALE: 1/4" = 1'-0"

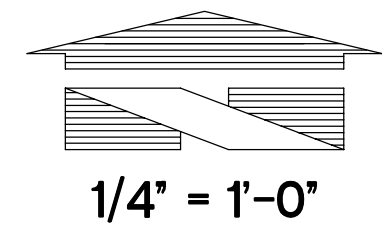


Job Number: 18230
Sheet: CA-1



C-STORE: 3,819 S.F.
CARWASH: 4,759 S.F.

PRELIMINARY FLOOR PLAN



No.	Date	By	Chd.	Appr.	Revision

Title:
PRELIMINARY FLOOR PLAN
 NW CORNER LAUREL RD + OHARA AVE.
 OAKLEY, CA 94961

For:
KEYLOCK ENTERPRISES
 1995 OAK PARK BLVD.
 PLEASANT HILL, CA 94523

Scale:
 Horizontal 1/4" = 1'-0"
 Vertical

DC
 Designed SK
 Drawn
 Checked
 Approved
 Date 02/13/17

18215 72ND AVENUE SOUTH
 KENT, WA 98032
 (425)251-6222 FAX
 (425)251-8782
 CIVIL ENGINEERING, LAND PLANNING,
 SURVEYING, ENVIRONMENTAL SERVICES



Job Number
18230
 Sheet
A11
 of