

City of Oakley

ADDENDUM NO. 1 to contract documents for
MAIN STREET IMPROVEMENTS FROM 2ND ST TO 5TH ST, CIP # 165B

BID OPENING DATE: February 16th, 2017 2:00 PM

Notice is hereby given that the following clarifications and revisions are made to the
above referenced contract documents:

Updates to the Plans and Specifications pages:

Plans:

Updated Sheets U-1 to U-3

All bidders shall acknowledge receipt and acceptance of Addendum No. 1 by signing in
the space provided at the end of this Addendum and submitting the signed addendum
with their proposal.



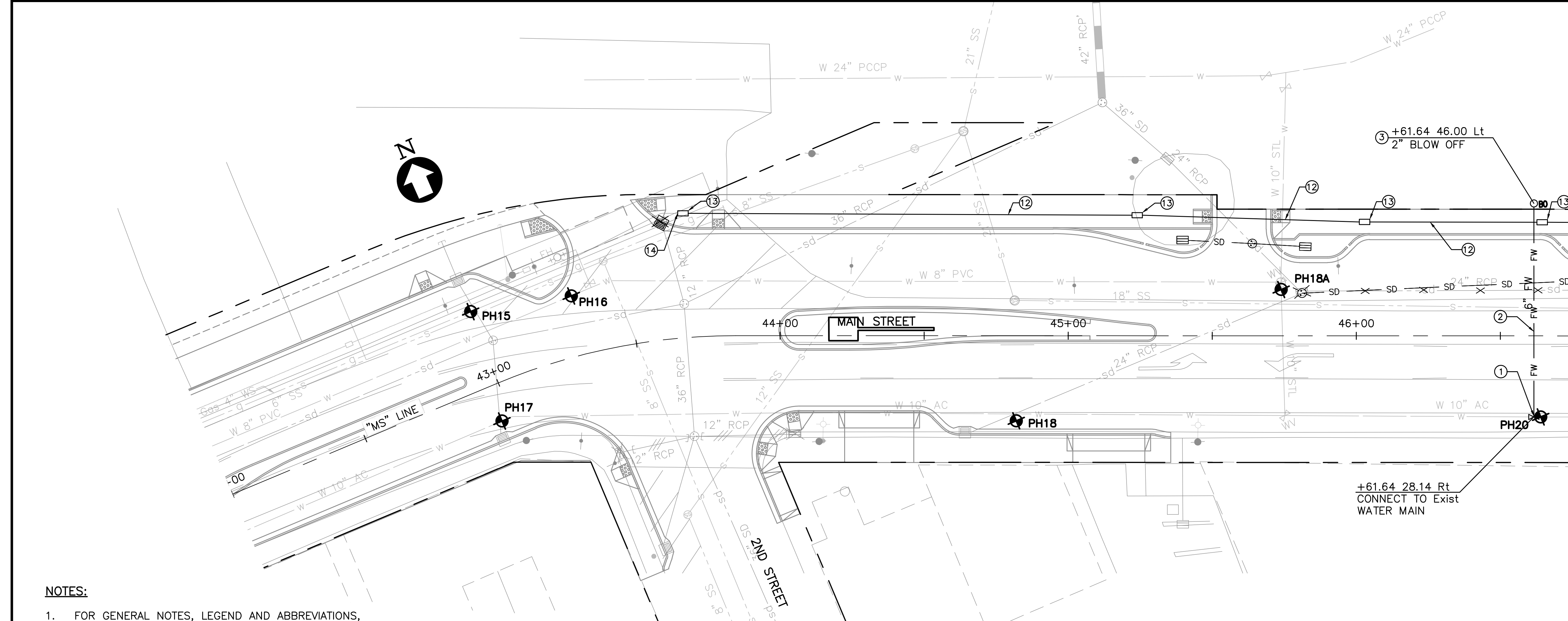
Jason Kabalin

Associate Engineer
January 9th, 2017

Contractor Signature

Date

Company Name



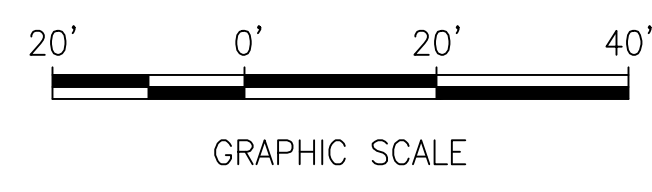
- NOTES:**
- FOR GENERAL NOTES, LEGEND AND ABBREVIATIONS, SEE SHEET GN-1.
 - FOR STORM DRAIN INFORMATION, SEE GRADING PLAN AND DRAINAGE PLAN.
 - FOR STREET LIGHT INFORMATION, SEE LIGHTING PLAN.
 - FOR TRAFFIC SIGNAL INFORMATION, SEE ELECTRICAL PLAN.
 - ALL EXISTING ABOVE GROUND UTILITY FEATURES SHALL BE ADJUSTED TO GRADE UNLESS OTHERWISE NOTED.
 - THIS PLAN IS ACCURATE FOR UTILITIES ONLY.
 - CONTRACTOR TO VERIFY ALL EXISTING UNDERGROUND UTILITIES BEFORE CONSTRUCTION.
 - FOR WATER DETAILS, REFER TO DIABLO WATER DISTRICT STANDARD SPECIFICATIONS AND DRAWINGS.
 - ALL AC PIPE REMOVED BY CONTRACTOR SHALL BE DISPOSED OF IN ACCORDANCE WITH CALIFORNIA REGULATIONS.
 - ABANDONED UTILITY LINES SHALL BE SLURRY FILLED.
 - CONTRACTOR SHALL CONFIRM WITH UTILITY OWNER THAT UTILITY HAS BEEN ABANDONED BEFORE REMOVING OR MODIFYING ANY ABANDONED UTILITY.
 - ALL WATER LINE TRENCHING SHALL CONFORM TO DIABLO WATER DISTRICT STANDARD DRAWING DWD 1, SEE DETAIL **1** CD-6
 - ALL SANITARY LINE TRENCHING SHALL CONFORM TO CENTRAL CONTRA COSTA COUNTY SANITARY DISTRICT STANDARD DRAWINGS DWD 14 AND DWD 15 SEE DETAIL **1** CD-6
 - FINAL PULLBOX LOCATION TO BE CONSISTENT WITH INSTALLED ELECTRICAL PULLBOXES AND CONCRETE IMPROVEMENTS. PULLBOXES TO BE INSTALLED IN STAMPED CONCRETE ONLY. PULLBOXES SHALL BE SPACED NO MORE THAN 250' APART.

- ITEMS OF WORK:**
- NEW WATER VALVE AND VALVE BOX PER DWD 15 AND 17. NEW 32# ANODE PER DWD C14. USE JCM 432 SS TAPPING TEE. HOT TAP BY TAP MASTERS ONLY. SEE DETAIL **1** CD-7 **2** CD-7 **5** CD-7
 - NEW 6" C900 FIRE WATER LINE PER DIABLO STANDARD SPECIFICATIONS AND DETAILS.
 - NEW 2" BLOWOFF ASSEMBLY PER DIABLO WATER DISTRICT DWD 21, SEE DETAIL **3** CD-7
 - NEW SANITARY SEWER CLEANOUT PER CENTRAL CONTRA COSTA COUNTY STANDARD DETAIL DWG-26, SEE DETAIL **3** CD-9
 - INSTALL 6" SDR 26 PVC SANITARY LINE PER CENTRAL CONTRA COSTA COUNTY STANDARD PLANS AND DETAILS, SEE DETAIL **1** CD-9 **2** CD-9
 - CONNECT TO EXISTING SSMH, SEE DETAIL **1** CD-8
 - NEW FIRE HYDRANT PER DIABLO WATER DISTRICT DWD 15 SEE DETAIL **2** CD-6 **1** CD-7 **2** CD-7
 - NEW WATER VALVE AND VALVE BOX PER DWD 15 AND 17, AND 32# ANODE PER DWD C14. HOT TAP BY TAP MASTER ONLY, SEE DETAIL **1** CD-7 **2** CD-7 **4** CD-7
 - NEW 6" ELBOW WITH 2" TAPPED FLANGE AND A 16# ANODE
 - NEW TWO GATE VALVES AND 32# ANODE, SEE DETAIL **1** CD-7 **2** CD-7 **5** CD-7
 - NEW 2" PVC COPPER COATING WATER LINE AND INSTALL MUELLER COMPRESSION FITTINGS AT CONNECTION POINTS
 - NEW 3" SCH 40 PVC COMMUNICATIONS CONDUIT WITH PULL ROPE
 - NEW CALTRANS NO. 6 PULLBOX. SEE NOTE 15

PLAN
SCALE: 1"=20'

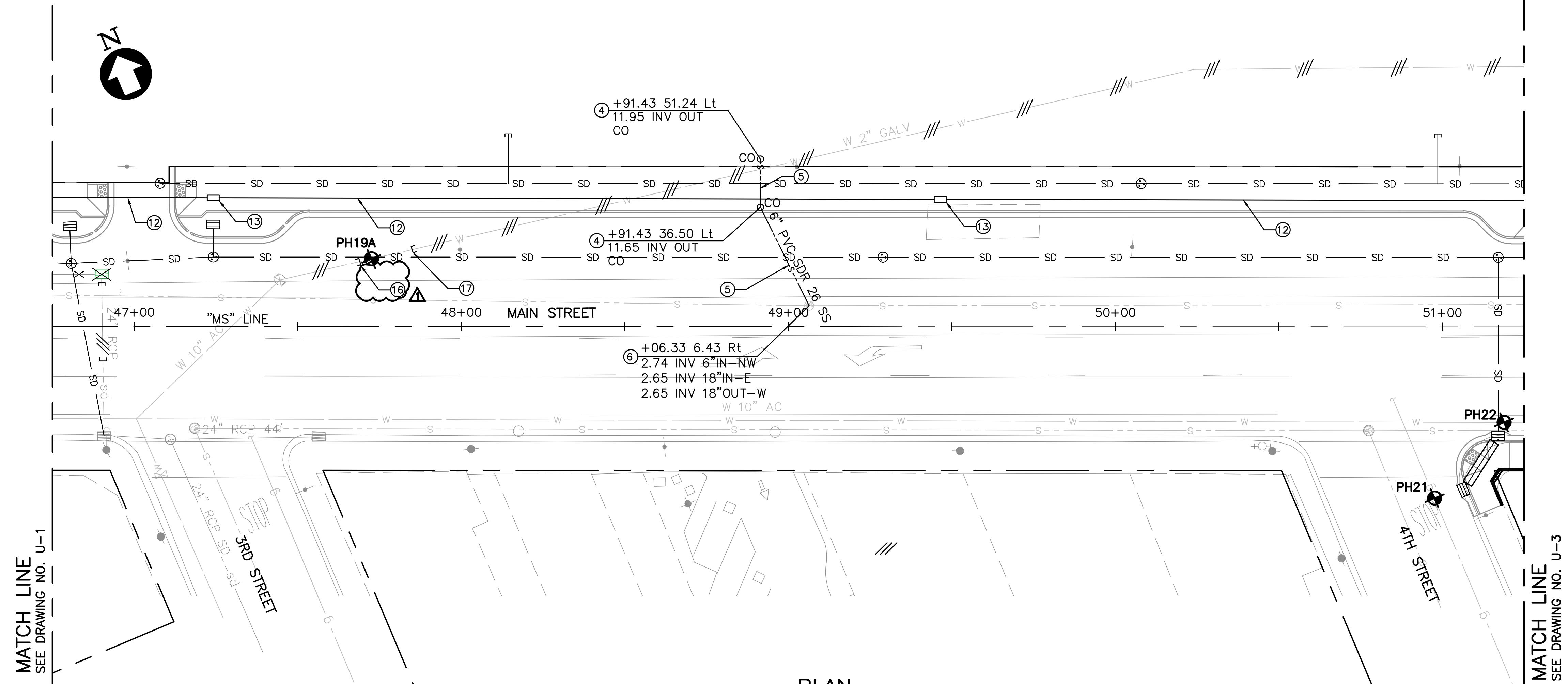
- CONNECT STUBBED 3" COMMUNICATION CONDUIT INTO PULLBOX.
- STUB 3" SCH 40 PVC COMMUNICATION CONDUIT BEYOND CURB AND GUTTER
- CUT AND CAP ABANDONED 2" WATER LINE IN CONFLICT WITH IMPROVEMENTS.
- CONNECT NEW 2" PVC COATED COPPER WATER LINE TO EXISTING 2" GALVANIZED WATER LINE. CUT AND CAP LINE WEST OF NEW CONNECTION. CONTRACTOR SHALL SCHEDULE HIS WORK SUCH THAT THIS WATERLINE CONNECTION IS COMPLETED PRIOR TO ANY OTHER WORK THAT MAY DAMAGE THE EXISTING 2" WATER LINE.

POTHOLE DATA			
PH	UTILITY	DESCRIPTION	DEPTH TO TOP
PH15	4" GAS	STEEL	35"
PH16	8" WATER	PVC	41"
PH17	10" WATER	AC	36"
PH18	10" WATER	AC	38"
PH18A	10" WATER	STEEL	41"
PH20	10" WATER	AC	16"



- LEGEND:**
- EXISTING
 - Exist Elect OH LINE
 - Exist GAS LINE
 - Exist SANITARY SEWER LINE
 - Exist JT LINE
 - Exist WATER LINE
 - Exist FIBER OPTIC LINE
 - Exist FIRE HYDRANT
 - Exist WATER VALVE
 - Exist AIR RELEASE VALVE
 - Exist SANITARY SEWER MANHOLE
 - Exist UTILITY POLE
 - Exist STREET LIGHT
 - Exist SIGNAL
 - Exist SIGN
 - PROPOSED WATER LATERAL
 - PROPOSED FIRE WATER LINE
 - PROPOSED FIRE HYDRANT
 - PROPOSED WATER METER
 - ABANDON WATER LINE IN PLACE
 - PROPOSED SANITARY SEWER LATERAL
 - PROPOSED CLEANOUT
 - PROPOSED DOUBLE CHECK VALVE

MATCH LINE
SEE DRAWING NO. U-2



PLAN

SCALE: 1"=20'

NOTES:

- FOR GENERAL NOTES, LEGEND AND ABBREVIATIONS, SEE SHEET GN-1.
- FOR STORM DRAIN INFORMATION, SEE GRADING PLAN AND DRAINAGE PLAN.
- FOR STREET LIGHT INFORMATION, SEE LIGHTING PLAN.
- FOR TRAFFIC SIGNAL INFORMATION, SEE ELECTRICAL PLAN.
- ALL EXISTING ABOVE GROUND UTILITY FEATURES SHALL BE ADJUSTED TO GRADE UNLESS OTHERWISE NOTED.
- THIS PLAN IS ACCURATE FOR UTILITIES ONLY.
- CONTRACTOR TO VERIFY ALL EXISTING UNDERGROUND UTILITIES BEFORE CONSTRUCTION.
- FOR WATER DETAILS, REFER TO DIABLO WATER DISTRICT STANDARD SPECIFICATIONS AND DRAWINGS.
- ALL AC PIPE REMOVED BY CONTRACTOR SHALL BE DISPOSED OF IN ACCORDANCE WITH CALIFORNIA REGULATIONS.
- ABANDONED UTILITY LINES SHALL BE SLURRY FILLED.
- CONTRACTOR SHALL CONFIRM WITH UTILITY OWNER THAT UTILITY HAS BEEN ABANDONED BEFORE REMOVING OR MODIFYING ANY ABANDONED UTILITY.
- ALL WATER LINE TRENCHING SHALL CONFORM TO DIABLO WATER DISTRICT STANDARD DRAWING DWD 1, SEE DETAIL **1** CD-6
- ALL SANITARY LINE TRENCHING SHALL CONFORM TO CENTRAL CONTRA COSTA COUNTY SANITARY DISTRICT STANDARD DRAWINGS DWD 14 AND DWD 15 SEE DETAIL **1** CD-6
- FINAL PULLBOX LOCATION TO BE CONSISTENT WITH INSTALLED ELECTRICAL PULLBOXES AND CONCRETE IMPROVEMENTS. PULLBOXES TO BE INSTALLED IN STAMPED CONCRETE ONLY. PULLBOXES SHALL BE SPACED NO MORE THAN 250' APART.

ITEMS OF WORK:

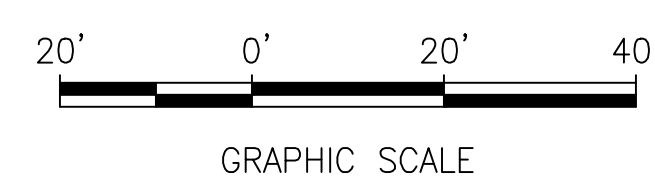
- NEW WATER VALVE AND VALVE BOX PER DWD 15 AND 17. NEW 32# ANODE PER DWD C14. USE JCM 432 SS TAPPING TEE. HOT TAP BY TAP MASTERS ONLY. SEE DETAIL **1** CD-7 **2** CD-7 **5** CD-7
- NEW 6" C900 FIRE WATER LINE PER DIABLO STANDARD SPECIFICATIONS AND DETAILS.
- NEW 2" BLOWOFF ASSEMBLY PER DIABLO WATER DISTRICT DWD 21, SEE DETAIL **3** CD-7
- NEW SANITARY SEWER CLEANOUT PER CENTRAL CONTRA COSTA COUNTY STANDARD DETAIL DWG-26, SEE DETAIL **3** CD-9
- INSTALL 6" SDR 26 PVC SANITARY LINE PER CENTRAL CONTRA COSTA COUNTY STANDARD PLANS AND DETAILS, SEE DETAIL **1** CD-9 **2** CD-9
- CONNECT TO EXISTING SSMH, SEE DETAIL **1** CD-8
- NEW FIRE HYDRANT PER DIABLO WATER DISTRICT DWD 15 SEE DETAIL **2** CD-6 **1** CD-7 **2** CD-7
- NEW WATER VALVE AND VALVE BOX PER DWD 15 AND 17, AND 32# ANODE PER DWD C14. HOT TAP BY TAP MASTER ONLY, SEE DETAIL **1** CD-7 **2** CD-7 **4** CD-7
- NEW 6" ELBOW WITH 2" TAPPED FLANGE AND A 16# ANODE
- NEW TWO GATE VALVES AND 32# ANODE, SEE DETAIL **1** CD-7 **2** CD-7 **5** CD-7
- NEW 2" PVC COPPER COATING WATER LINE AND INSTALL MUELLER COMPRESSION FITTINGS AT CONNECTION POINTS
- NEW 3" SCH 40 PVC COMMUNICATIONS CONDUIT WITH PULL ROPE
- NEW CALTRANS NO. 6 PULLBOX. SEE NOTE 15

- CONNECT STUBBED 3" COMMUNICATION CONDUIT INTO PULLBOX.
- STUB 3" SCH 40 PVC COMMUNICATION CONDUIT BEYOND CURB AND GUTTER
- CUT AND CAP ABANDONED 2" WATER LINE IN CONFLICT WITH IMPROVEMENTS.
- CONNECT NEW 2" PVC COATED COPPER WATER LINE TO EXISTING 2" GALVANIZED WATER LINE. CUT AND CAP LINE WEST OF NEW CONNECTION. CONTRACTOR SHALL SCHEDULE HIS WORK SUCH THAT THIS WATERLINE CONNECTION IS COMPLETED PRIOR TO ANY OTHER WORK THAT MAY DAMAGE THE EXISTING 2" WATER LINE.

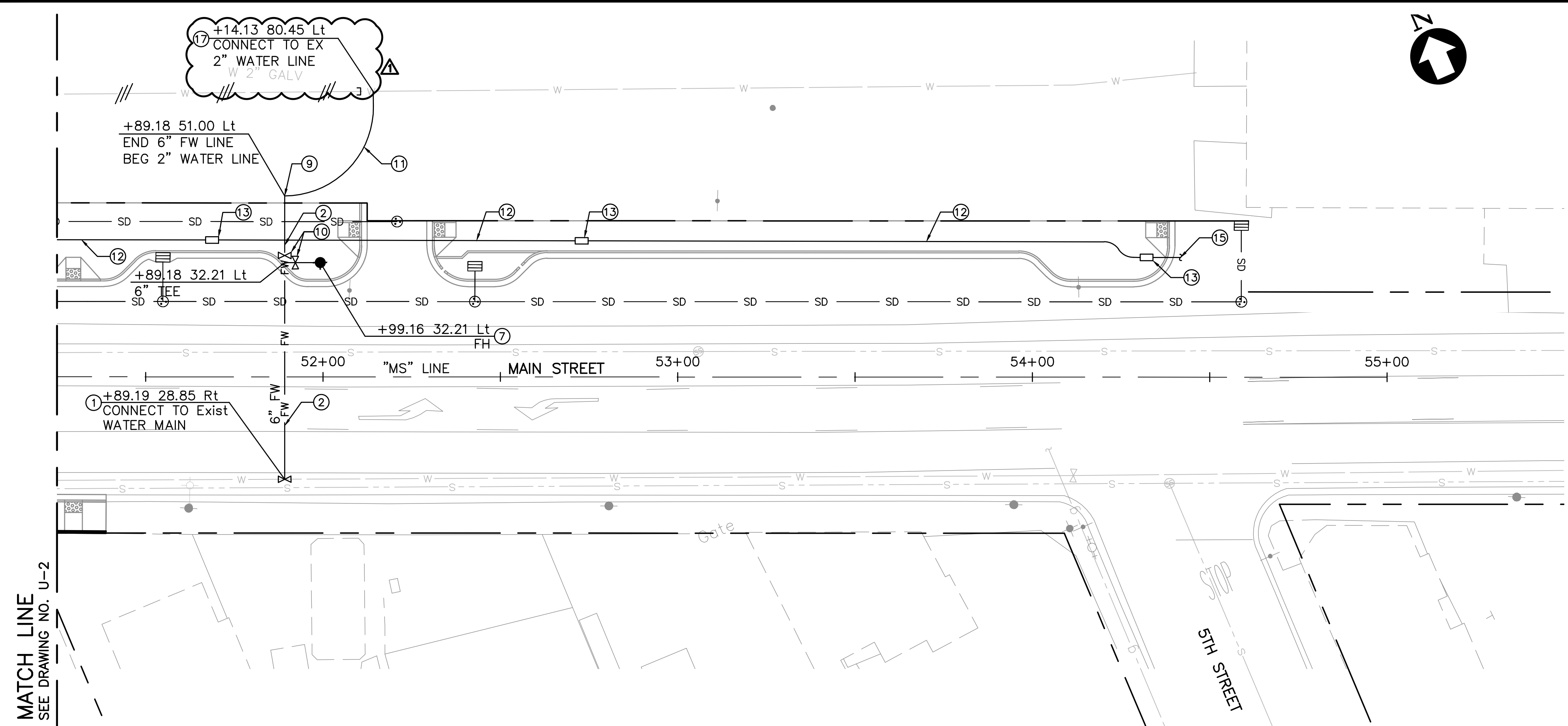
POTHOLE DATA			
PH	UTILITY	DESCRIPTION	DEPTH TO TOP
PH19A	2" WATER	STEEL	35"
PH21	1 1/4" GAS	STEEL	41"
PH22	10" WATER	AC	40"

LEGEND:

- EXISTING
- Exist Elect OH LINE
- Exist GAS LINE
- Exist SANITARY SEWER LINE
- Exist JT LINE
- Exist WATER LINE
- Exist FIBER OPTIC LINE
- Exist FIRE HYDRANT
- Exist WATER VALVE
- Exist AIR RELEASE VALVE
- Exist SANITARY SEWER MANHOLE
- Exist UTILITY POLE
- Exist STREET LIGHT
- Exist SIGNAL
- Exist SIGN
- PROPOSED WATER LATERAL
- PROPOSED FIRE WATER LINE
- PROPOSED FIRE HYDRANT
- PROPOSED WATER METER
- ABANDON WATER LINE IN PLACE
- PROPOSED SANITARY SEWER LATERAL
- PROPOSED CLEANOUT
- PROPOSED DOUBLE CHECK VALVE



DRAWING NAME: \\WP05-51\proj\165B\CIP165B\165B-CIP165B-01.dwg
DATE: 12/16/16
DRAWN: TM
CHECKED: MC



PLAN
SCALE: 1"=20'

- NOTES:**
- FOR GENERAL NOTES, LEGEND AND ABBREVIATIONS, SEE SHEET GN-1.
 - FOR STORM DRAIN INFORMATION, SEE GRADING PLAN AND DRAINAGE PLAN.
 - FOR STREET LIGHT INFORMATION, SEE LIGHTING PLAN.
 - FOR TRAFFIC SIGNAL INFORMATION, SEE ELECTRICAL PLAN.
 - ALL EXISTING ABOVE GROUND UTILITY FEATURES SHALL BE ADJUSTED TO GRADE UNLESS OTHERWISE NOTED.
 - THIS PLAN IS ACCURATE FOR UTILITIES ONLY.
 - CONTRACTOR TO VERIFY ALL EXISTING UNDERGROUND UTILITIES BEFORE CONSTRUCTION.
 - FOR WATER DETAILS, REFER TO DIABLO WATER DISTRICT STANDARD SPECIFICATIONS AND DRAWINGS.
 - ALL AC PIPE REMOVED BY CONTRACTOR SHALL BE DISPOSED OF IN ACCORDANCE WITH CALIFORNIA REGULATIONS.
 - ABANDONED UTILITY LINES SHALL BE SLURRY FILLED.
 - CONTRACTOR SHALL CONFIRM WITH UTILITY OWNER THAT UTILITY HAS BEEN ABANDONED BEFORE REMOVING OR MODIFYING ANY ABANDONED UTILITY.
 - ALL WATER LINE TRENCHING SHALL CONFORM TO DIABLO WATER DISTRICT STANDARD DRAWING DWD 1, SEE DETAIL **1** CD-6
 - ALL SANITARY LINE TRENCHING SHALL CONFORM TO CENTRAL CONTRA COSTA COUNTY SANITARY DISTRICT STANDARD DRAWINGS DWD 14 AND DWD 15 SEE DETAIL **1** CD-6
 - FINAL PULLBOX LOCATION TO BE CONSISTENT WITH INSTALLED ELECTRICAL PULLBOXES AND CONCRETE IMPROVEMENTS. PULLBOXES TO BE INSTALLED IN STAMPED CONCRETE ONLY. PULLBOXES SHALL BE SPACED NO MORE THAN 250' APART.

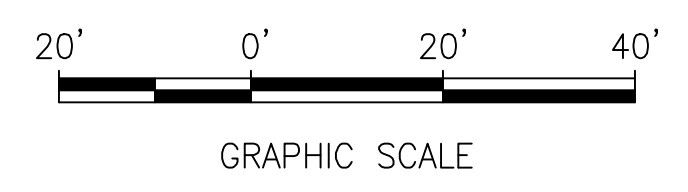
ITEMS OF WORK:

- NEW WATER VALVE AND VALVE BOX PER DWD 15 AND 17. NEW 32# ANODE PER DWD C14. USE JCM 432 SS TAPPING TEE. HOT TAP BY TAP MASTERS ONLY. SEE DETAIL **1** CD-7 **2** CD-7 **5** CD-7
- NEW 6" C900 FIRE WATER LINE PER DIABLO STANDARD SPECIFICATIONS AND DETAILS.
- NEW 2" BLOWOFF ASSEMBLY PER DIABLO WATER DISTRICT DWD 21, SEE DETAIL **3** CD-7
- NEW SANITARY SEWER CLEANOUT PER CENTRAL CONTRA COSTA COUNTY STANDARD DETAIL DWG-26, SEE DETAIL **3** CD-9
- INSTALL 6" SDR 26 PVC SANITARY LINE PER CENTRAL CONTRA COSTA COUNTY STANDARD PLANS AND DETAILS, SEE DETAIL **1** CD-9 **2** CD-9
- CONNECT TO EXISTING SSMH, SEE DETAIL **1** CD-8
- NEW FIRE HYDRANT PER DIABLO WATER DISTRICT DWD 15 SEE DETAIL **2** CD-6 **1** CD-7 **2** CD-7
- NEW WATER VALVE AND VALVE BOX PER DWD 15 AND 17, AND 32# ANODE PER DWD C14. HOT TAP BY TAP MASTER ONLY, SEE DETAIL **1** CD-7 **2** CD-7 **4** CD-7
- NEW 6" ELBOW WITH 2" TAPPED FLANGE AND A 16# ANODE
- NEW TWO GATE VALVES AND 32# ANODE, SEE DETAIL **1** CD-7 **2** CD-7 **5** CD-7
- NEW 2" PVC COPPER COATING WATER LINE AND INSTALL MUELLER COMPRESSION FITTINGS AT CONNECTION POINTS
- NEW 3" SCH 40 PVC COMMUNICATIONS CONDUIT WITH PULL ROPE
- NEW CALTRANS NO. 6 PULLBOX. SEE NOTE 15

- CONNECT STUBBED 3" COMMUNICATION CONDUIT INTO PULLBOX.
- STUB 3" SCH 40 PVC COMMUNICATION CONDUIT BEYOND CURB AND GUTTER
- CUT AND CAP ABANDONED 2" WATER LINE IN CONFLICT WITH IMPROVEMENTS.
- CONNECT NEW 2" PVC COATED COPPER WATER LINE TO EXISTING 2" GALVANIZED WATER LINE. CUT AND CAP LINE WEST OF NEW CONNECTION. CONTRACTOR SHALL SCHEDULE HIS WORK SUCH THAT THIS WATERLINE CONNECTION IS COMPLETED PRIOR TO ANY OTHER WORK THAT MAY DAMAGE THE EXISTING 2" WATER LINE.

LEGEND:

- EXISTING**
- (e)--- Exist Elect OH LINE
 - g--- Exist GAS LINE
 - s--- Exist SANITARY SEWER LINE
 - jt--- Exist JT LINE
 - w--- Exist WATER LINE
 - fo--- Exist FIBER OPTIC LINE
 - FH ∅ Exist FIRE HYDRANT
 - WV ∞ Exist WATER VALVE
 - ARV ∞ Exist AIR RELEASE VALVE
 - ⊙ Exist SANITARY SEWER MANHOLE
 - Exist UTILITY POLE
 - ⊙ Exist STREET LIGHT
 - ⊙ Exist SIGNAL
 - Exist SIGN
- PROPOSED**
- w--- PROPOSED WATER LATERAL
 - fw--- PROPOSED FIRE WATER LINE
 - PROPOSED FIRE HYDRANT
 - WM □ PROPOSED WATER METER
 - /// ABANDON WATER LINE IN PLACE
 - s--- PROPOSED SANITARY SEWER LATERAL
 - PROPOSED CLEANOUT
 - PROPOSED DOUBLE CHECK VALVE



DRAWING NAME: \\NFCS-51\apps\121616\CIP165B\CIP165B.dwg PLOT DATE: 12/16/16 PLOTTED BY: LAM